

2018/06/28

MP41 Series High precision digital pressure switch Design Change

Thank for your support for Mindman product. **MP41** series will have following changes. Sorry for any potential inconvenience and thank you for the cooperation.

1. Model series

MP41 Series High precision digital pressure switch

2. Design Change reason

To strengthen product function and add the "Compound" specification.

3. Design change

MP41 series:

Before

MP41P - 02 - QD - □ - W

MODEL

OUTPUT METHOD
02: 1 NPN output
04: 1 PNP output

PRESSURE UNIT
Blank: Unit changeable
J: Unit unchangeable
(Fixed unit is MPa)

HOLDER
W: White (for MA**302 / 401-W / 403 / 501 series)
B: Black (for MA**401 series)

PRESSURE RANGE

P: Positive (−0.100~1.000 MPa)

CABLE LENGTH /
CONNECTOR

Blank: With 2 meter cable

QD: With M8, 3-Pin male connector

After

MP41P - 022 - QD - W

MODEL

OUTPUT METHOD
022: 2 NPN output
042: 2 PNP output

PRESSURE RANGE

C: Compound (−101.0~101.0 kPa)

P: Positive (−0.100~1.000 MPa)

CABLE LENGTH /
CONNECTOR

Blank: With 2 meter cable

QD: With M8, 4-Pin male connector

HOLDER

W: White (for MA**302 / 401-W / 403 / 501 series)
B: Black (for MA**401 series)

* Remove the " - J " specification.

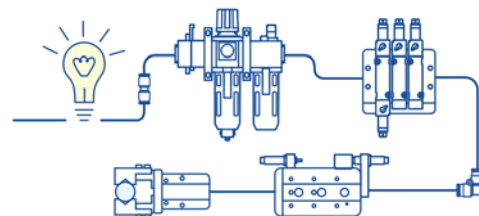
Model	MP41P-02	MP41P-04
Connect diagram		
Output method	NPN output	PNP output

Note: The QD specification comes with a female connector .

2 NPN Output

2 PNP Output

Note: The QD specification no longer comes with a female connector. If necessary, please order the "MP-D1" separately.



MA*302/401/403/501 Series:

Before	After
<p>Taking 302 Series as an example:</p> <p>MAFR302 - 8A - □ - E3 - □ - G</p> <div> <div> <p>MODEL</p> <p>MACP302</p> <p>MACT302</p> <p>MAFR302</p> <p>MAR302</p> </div> <div> <p>BORE SIZE</p> <p>8A: 1/4</p> <p>10A: 3/8</p> <p>15A: 1/2</p> </div> <div> <p>PRESSURE SWITCH</p> <p>E1: MP41P-02</p> <p>E2: MP41P-02-QD</p> <p>E3: MP41P-02-J</p> <p>E4: MP41P-02-QD-J</p> <p>E5: MP41P-04</p> <p>E6: MP41P-04-QD</p> <p>E7: MP41P-04-J</p> <p>E8: MP41P-04-QD-J</p> </div> <div> <p>(*) FILTER ELEMENT</p> <p>Blank: 5μm</p> <p>40u: 40μm</p> </div> <div> <p>PORT THREAD</p> <p>Blank: Rc thread</p> <p>G: G thread</p> <p>NPT: NPT thread</p> </div> </div> <p>Blank: Standard type D: auto drain valve (FMRF300) N: Nylon bowl</p>	<p>Taking 302 Series as an example:</p> <p>MAFR302 - 8A - □ - E2 - □ - G</p> <div> <div> <p>MODEL</p> <p>MACP302</p> <p>MACT302</p> <p>MAFR302</p> <p>MAR302</p> </div> <div> <p>BORE SIZE</p> <p>8A: 1/4</p> <p>10A: 3/8</p> <p>15A: 1/2</p> </div> <div> <p>PRESSURE SWITCH</p> <p>E1: MP41P-022</p> <p>E2: MP41P-022-QD</p> <p>E5: MP41P-042</p> <p>E6: MP41P-042-QD</p> </div> <div> <p>(*) FILTER ELEMENT</p> <p>Blank: 5μm</p> <p>40u: 40μm</p> </div> <div> <p>PORT THREAD</p> <p>Blank: Rc thread</p> <p>G: G thread</p> <p>NPT: NPT thread</p> </div> </div> <p>Blank: Standard type D: auto drain valve (FMRF300) N: Nylon bowl</p>

4. Effective Date

Do not affect the usage, will change sequentially.

5. If you have any question, please contact our sales representative.