

2018/11/12

MVB Series Multi Connector System Exterior of D-Sub/ Color & Position of Pin Change Notification

Thanks for your continuous support for Mindman products. MVB series multi connector system will have following changes. Sorry for any potential inconvenience and thank you for the cooperation.

1.Product Series

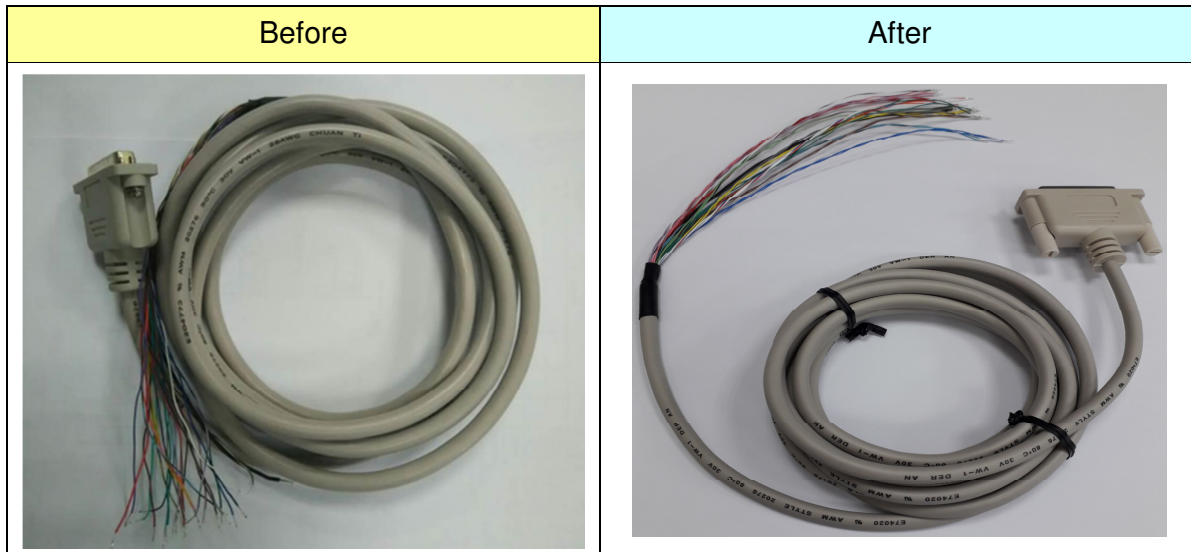
MVB-100/156/220/300/460 Multi Connector System

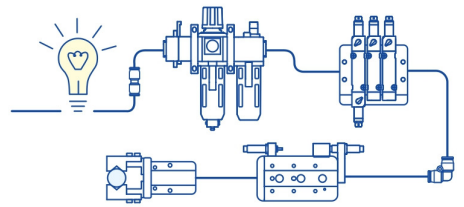
2.Design Change Reason

In order to improve the convenience of locking, add the thumb screw mounted onto the D-sub connector housing. Thus the exterior of D-sub and the color and relative position of the 25 wires in the D-sub connector will be also changed.

3.Design Change

3.1 D-sub exterior





3.2 Color and relative position of the internal 25 wires for MVB series.

Before		After	
PINOUT	WIRE COLOR	PINOUT	WIRE COLOR
1	Brown	1	Brown
2	Brown/Black	2	Brown/White
3	Red	3	Red
4	Red/Black	4	Red/Black
5	Orange	5	Orange
6	Orange/Black	6	Orange/Black
7	Yellow	7	Yellow
8	Yellow/Black	8	Yellow/Black
9	Green	9	Green
10	Green/Black	10	Green/Black
11	Blue	11	Blue
12	Blue/Black	12	Blue/White
13	Purple	13	Purple
14	Purple/Black	14	Purple/White
15	Gray	15	Gray
16	Gray/Black	16	Gray/Black
17	White	17	White
18	White/Black	18	White/Black
19	Pink	19	Pink
20	Pink/Black	20	Pink/Black
21	Light purple	21	White/Red
22	Light purple/Black	22	White/Blue
23	Light blue	23	Light blue
24	Light blue/Black	24	Light blue/Black
25	Light green	25	Light green
SHELL	Ground wire	SHELL	Ground wire

4. Effective Date

With immediate effect.

5. Others

If there is any question, please contact our sales department.