



Sep. 9<sup>th</sup>, 2021

## MAR401/403 and MAFR401/403 Series Order Code Change Notification

Thank you for supporting Mindman products. The design change will apply to the following models. Sorry for any inconvenience may occur. Please kindly understand and cooperate.

### 1. Model series

MAR401/403 · MAFR401/403 series

### 2. Design change reason

As the product adds the panel mounting function, the order code changes the brackets to optional. Customers can choose according to needs.

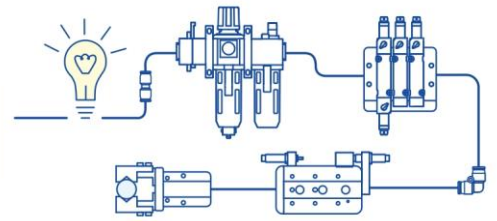
### 3. Change descriptions

See next page.

### 4. Effective date

Effective on October 2021 sequentially.

5. If there is any questions, please contact our sales department.



Sep. 9<sup>th</sup>, 2021

Change descriptions

Before	After																								
<p><b>MAFR401 - 8A - □ - HA□P - E1 - □ - HT - □</b></p> <p>MODEL: Blank</p> <p>PORT SIZE: 8A: 1/4, 10A: 3/8, 15A: 1/2</p> <p>EXTERIOR COLOR: Blank: Black &amp; silver, W: Gray &amp; white</p> <p>(Option) PRESSURE SWITCH: E1: MP41P-022, E2: MP41P-022-QD, E5: MP41P-042, E6: MP41P-042-QD. * Refer to page 5-13 for MP41.</p> <p>FILTER ELEMENT: Blank: 40µm, 5µ: 5µm. * Refer to page 4-49.</p> <p>(Option) SHUTOFF VALVE: HT: MVHT-400-3H. * Refer to page 4-49.</p> <p>PORT THREAD: Blank: Rc thread, G: G thread, NPT: NPT thread</p> <p>(Option) ACCESSORIES</p> <table border="1"> <thead> <tr> <th>Type</th> <th>Pressure gauge</th> <th>Drain valve</th> <th>Pressure switch</th> </tr> </thead> <tbody> <tr> <td>Blank: Standard type</td> <td>Blank: Pressure gauge (PG-20) C: External pressure gauge (PG-40) + Gauge adapter set (A-MAR401) A: Gauge adapter set (A-MAR401)</td> <td>Blank: Semi-auto drain D: Auto drain valve (FMRF300)</td> <td>P: Pressure switch (MPS series)</td> </tr> <tr> <td>H: High pressure type</td> <td>C: External pressure gauge (PG-40) + Gauge adapter set (A-MAR401) A: Gauge adapter set (A-MAR401)</td> <td>Blank: Semi-auto drain</td> <td>-</td> </tr> </tbody> </table>	Type	Pressure gauge	Drain valve	Pressure switch	Blank: Standard type	Blank: Pressure gauge (PG-20) C: External pressure gauge (PG-40) + Gauge adapter set (A-MAR401) A: Gauge adapter set (A-MAR401)	Blank: Semi-auto drain D: Auto drain valve (FMRF300)	P: Pressure switch (MPS series)	H: High pressure type	C: External pressure gauge (PG-40) + Gauge adapter set (A-MAR401) A: Gauge adapter set (A-MAR401)	Blank: Semi-auto drain	-	<p><b>MAFR401 - 8A - □ - HA□P - E1 - □ - □ - □</b></p> <p>MODEL: Blank</p> <p>PORT SIZE: 8A: 1/4, 10A: 3/8, 15A: 1/2</p> <p>EXTERIOR COLOR: Blank: Black &amp; silver, W: Gray &amp; white</p> <p>(Option) PRESSURE SWITCH: E1: MP41P-022, E2: MP41P-022-QD, E5: MP41P-042, E6: MP41P-042-QD. * Refer to page 5-13 for MP41.</p> <p>FILTER ELEMENT: Blank: 40µm, 5µ: 5µm. * Refer to page 4-49.</p> <p>(Option) SHUTOFF VALVE: HT: MVHT-400-3H. * Refer to page 4-49.</p> <p>PORT THREAD: Blank: Rc thread, G: G thread, NPT: NPT thread</p> <p>(Option) ACCESSORIES</p> <table border="1"> <thead> <tr> <th>Type</th> <th>Pressure gauge</th> <th>Drain valve</th> <th>Pressure switch</th> </tr> </thead> <tbody> <tr> <td>Blank: Standard type</td> <td>Blank: Pressure gauge (PG-20) C: External pressure gauge (PG-40) + Gauge adapter set (A-MAR401) A: Gauge adapter set (A-MAR401)</td> <td>Blank: Semi-auto drain D: Auto drain valve (FMRF300)</td> <td>P: Pressure switch (MPS series)</td> </tr> <tr> <td>H: High pressure type</td> <td>C: External pressure gauge (PG-40) + Gauge adapter set (A-MAR401) A: Gauge adapter set (A-MAR401)</td> <td>Blank: Semi-auto drain</td> <td>-</td> </tr> </tbody> </table>	Type	Pressure gauge	Drain valve	Pressure switch	Blank: Standard type	Blank: Pressure gauge (PG-20) C: External pressure gauge (PG-40) + Gauge adapter set (A-MAR401) A: Gauge adapter set (A-MAR401)	Blank: Semi-auto drain D: Auto drain valve (FMRF300)	P: Pressure switch (MPS series)	H: High pressure type	C: External pressure gauge (PG-40) + Gauge adapter set (A-MAR401) A: Gauge adapter set (A-MAR401)	Blank: Semi-auto drain	-
Type	Pressure gauge	Drain valve	Pressure switch																						
Blank: Standard type	Blank: Pressure gauge (PG-20) C: External pressure gauge (PG-40) + Gauge adapter set (A-MAR401) A: Gauge adapter set (A-MAR401)	Blank: Semi-auto drain D: Auto drain valve (FMRF300)	P: Pressure switch (MPS series)																						
H: High pressure type	C: External pressure gauge (PG-40) + Gauge adapter set (A-MAR401) A: Gauge adapter set (A-MAR401)	Blank: Semi-auto drain	-																						
Type	Pressure gauge	Drain valve	Pressure switch																						
Blank: Standard type	Blank: Pressure gauge (PG-20) C: External pressure gauge (PG-40) + Gauge adapter set (A-MAR401) A: Gauge adapter set (A-MAR401)	Blank: Semi-auto drain D: Auto drain valve (FMRF300)	P: Pressure switch (MPS series)																						
H: High pressure type	C: External pressure gauge (PG-40) + Gauge adapter set (A-MAR401) A: Gauge adapter set (A-MAR401)	Blank: Semi-auto drain	-																						
<p><b>MAFR403 - 8A - NC□P - E1 - □ - □</b></p> <p>MODEL: Blank</p> <p>PORT SIZE: 8A: 1/4, 10A: 3/8, 15A: 1/2</p> <p>(Option) PRESSURE SWITCH: E1: MP41P-022, E2: MP41P-022-QD, E5: MP41P-042, E6: MP41P-042-QD. * Refer to page 5-13 for MP41.</p> <p>FILTER ELEMENT: Blank: 40µm, 5µ: 5µm. * Refer to page 4-49.</p> <p>PORT THREAD: Blank: Rc thread, G: G thread, NPT: NPT thread</p> <p>(Option) ACCESSORIES</p> <table border="1"> <thead> <tr> <th>Type</th> <th>Pressure gauge</th> <th>Drain valve</th> <th>Pressure switch</th> </tr> </thead> <tbody> <tr> <td>Blank: PC bowl N: Nylon bowl</td> <td>Blank: Pressure gauge (PG-20) C: External pressure gauge (PG-40) + Gauge adapter set (A-MAR302) A: Gauge adapter set (A-MAR302)</td> <td>Blank: Semi-auto drain D: Auto drain valve (FMRF300)</td> <td>P: Pressure switch (MPS series)</td> </tr> </tbody> </table>	Type	Pressure gauge	Drain valve	Pressure switch	Blank: PC bowl N: Nylon bowl	Blank: Pressure gauge (PG-20) C: External pressure gauge (PG-40) + Gauge adapter set (A-MAR302) A: Gauge adapter set (A-MAR302)	Blank: Semi-auto drain D: Auto drain valve (FMRF300)	P: Pressure switch (MPS series)	<p><b>MAFR403 - 8A - NC□P - E1 - □ - □ - □</b></p> <p>MODEL: Blank</p> <p>PORT SIZE: 8A: 1/4, 10A: 3/8, 15A: 1/2</p> <p>(Option) PRESSURE SWITCH: E1: MP41P-022, E2: MP41P-022-QD, E5: MP41P-042, E6: MP41P-042-QD. * Refer to page 5-13 for MP41.</p> <p>FILTER ELEMENT: Blank: 40µm, 5µ: 5µm. * Refer to page 4-49.</p> <p>(Option) BRACKET: Blank: Without, B2: Screw fixed. * Refer to page 4-49.</p> <p>PORT THREAD: Blank: Rc thread, G: G thread, NPT: NPT thread</p> <p>(Option) ACCESSORIES</p> <table border="1"> <thead> <tr> <th>Type</th> <th>Pressure gauge</th> <th>Drain valve</th> <th>Pressure switch</th> </tr> </thead> <tbody> <tr> <td>Blank: PC bowl N: Nylon bowl</td> <td>Blank: Pressure gauge (PG-20) C: External pressure gauge (PG-40) + Gauge adapter set (A-MAR302) A: Gauge adapter set (A-MAR302)</td> <td>Blank: Semi-auto drain D: Auto drain valve (FMRF300)</td> <td>P: Pressure switch (MPS series)</td> </tr> </tbody> </table>	Type	Pressure gauge	Drain valve	Pressure switch	Blank: PC bowl N: Nylon bowl	Blank: Pressure gauge (PG-20) C: External pressure gauge (PG-40) + Gauge adapter set (A-MAR302) A: Gauge adapter set (A-MAR302)	Blank: Semi-auto drain D: Auto drain valve (FMRF300)	P: Pressure switch (MPS series)								
Type	Pressure gauge	Drain valve	Pressure switch																						
Blank: PC bowl N: Nylon bowl	Blank: Pressure gauge (PG-20) C: External pressure gauge (PG-40) + Gauge adapter set (A-MAR302) A: Gauge adapter set (A-MAR302)	Blank: Semi-auto drain D: Auto drain valve (FMRF300)	P: Pressure switch (MPS series)																						
Type	Pressure gauge	Drain valve	Pressure switch																						
Blank: PC bowl N: Nylon bowl	Blank: Pressure gauge (PG-20) C: External pressure gauge (PG-40) + Gauge adapter set (A-MAR302) A: Gauge adapter set (A-MAR302)	Blank: Semi-auto drain D: Auto drain valve (FMRF300)	P: Pressure switch (MPS series)																						
<p><b>MAR401 K - 8A - □ - □ - HAP - E1 - □</b></p> <p>MODEL: Blank: Standard, K: Backflow function</p> <p>PORT SIZE: 8A: 1/4, 10A: 3/8, 15A: 1/2</p> <p>EXTERIOR COLOR: Blank: Black &amp; silver, W: Gray &amp; white</p> <p>EXHAUST MECHANISM: Blank: Relieving type, Q: Non-relieving type</p> <p>(Option) PRESSURE SWITCH: E1: MP41P-022, E2: MP41P-022-QD, E5: MP41P-042, E6: MP41P-042-QD</p> <p>PORT THREAD: Blank: Rc thread, G: G thread, NPT: NPT thread</p> <p>(Option) ACCESSORIES</p> <table border="1"> <thead> <tr> <th>Type</th> <th>Pressure gauge</th> <th>Pressure switch</th> </tr> </thead> <tbody> <tr> <td>Blank: Standard type</td> <td>Blank: Pressure gauge (PG-20) C: External pressure gauge (PG-40) + Gauge adapter set (A-MAR401) A: Gauge adapter set (A-MAR401)</td> <td>P: Pressure switch (MPS series)</td> </tr> <tr> <td>H: High pressure type</td> <td>C: External pressure gauge (PG-40) + Gauge adapter set (A-MAR401) A: Gauge adapter set (A-MAR401)</td> <td>-</td> </tr> </tbody> </table>	Type	Pressure gauge	Pressure switch	Blank: Standard type	Blank: Pressure gauge (PG-20) C: External pressure gauge (PG-40) + Gauge adapter set (A-MAR401) A: Gauge adapter set (A-MAR401)	P: Pressure switch (MPS series)	H: High pressure type	C: External pressure gauge (PG-40) + Gauge adapter set (A-MAR401) A: Gauge adapter set (A-MAR401)	-	<p><b>MAR401 K - 8A - □ - □ - HAP - E1 - □ - □</b></p> <p>MODEL: Blank: Standard, K: Backflow function</p> <p>PORT SIZE: 8A: 1/4, 10A: 3/8, 15A: 1/2</p> <p>EXTERIOR COLOR: Blank: Black &amp; silver, W: Gray &amp; white</p> <p>EXHAUST MECHANISM: Blank: Relieving type, Q: Non-relieving type</p> <p>(Option) PRESSURE SWITCH: E1: MP41P-022, E2: MP41P-022-QD, E5: MP41P-042, E6: MP41P-042-QD</p> <p>PORT THREAD: Blank: Rc thread, G: G thread, NPT: NPT thread</p> <p>(Option) ACCESSORIES</p> <table border="1"> <thead> <tr> <th>Type</th> <th>Pressure gauge</th> <th>Pressure switch</th> </tr> </thead> <tbody> <tr> <td>Blank: Standard type</td> <td>Blank: Pressure gauge (PG-20) C: External pressure gauge (PG-40) + Gauge adapter set (A-MAR401) A: Gauge adapter set (A-MAR401)</td> <td>P: Pressure switch (MPS series)</td> </tr> <tr> <td>H: High pressure type</td> <td>C: External pressure gauge (PG-40) + Gauge adapter set (A-MAR401) A: Gauge adapter set (A-MAR401)</td> <td>-</td> </tr> </tbody> </table>	Type	Pressure gauge	Pressure switch	Blank: Standard type	Blank: Pressure gauge (PG-20) C: External pressure gauge (PG-40) + Gauge adapter set (A-MAR401) A: Gauge adapter set (A-MAR401)	P: Pressure switch (MPS series)	H: High pressure type	C: External pressure gauge (PG-40) + Gauge adapter set (A-MAR401) A: Gauge adapter set (A-MAR401)	-						
Type	Pressure gauge	Pressure switch																							
Blank: Standard type	Blank: Pressure gauge (PG-20) C: External pressure gauge (PG-40) + Gauge adapter set (A-MAR401) A: Gauge adapter set (A-MAR401)	P: Pressure switch (MPS series)																							
H: High pressure type	C: External pressure gauge (PG-40) + Gauge adapter set (A-MAR401) A: Gauge adapter set (A-MAR401)	-																							
Type	Pressure gauge	Pressure switch																							
Blank: Standard type	Blank: Pressure gauge (PG-20) C: External pressure gauge (PG-40) + Gauge adapter set (A-MAR401) A: Gauge adapter set (A-MAR401)	P: Pressure switch (MPS series)																							
H: High pressure type	C: External pressure gauge (PG-40) + Gauge adapter set (A-MAR401) A: Gauge adapter set (A-MAR401)	-																							
<p><b>MAR403 K - 8A - □ - □ - E1 - □</b></p> <p>MODEL: Blank: Standard, K: Backflow function</p> <p>PORT SIZE: 8A: 1/4, 10A: 3/8, 15A: 1/2</p> <p>EXHAUST MECHANISM: Blank: Relieving type, Q: Non-relieving type</p> <p>(Option) PRESSURE SWITCH: E1: MP41P-022, E2: MP41P-022-QD, E5: MP41P-042, E6: MP41P-042-QD</p> <p>PORT THREAD: Blank: Rc thread, G: G thread, NPT: NPT thread</p> <p>(Option) ACCESSORIES</p> <table border="1"> <thead> <tr> <th>Type</th> <th>Pressure gauge</th> <th>Pressure switch</th> </tr> </thead> <tbody> <tr> <td>Blank: Standard type</td> <td>Blank: Pressure gauge (PG-20) C: External pressure gauge (PG-40) + Gauge adapter set (A-MAR302) A: Gauge adapter set (A-MAR302)</td> <td>P: Pressure switch (MPS series)</td> </tr> </tbody> </table>	Type	Pressure gauge	Pressure switch	Blank: Standard type	Blank: Pressure gauge (PG-20) C: External pressure gauge (PG-40) + Gauge adapter set (A-MAR302) A: Gauge adapter set (A-MAR302)	P: Pressure switch (MPS series)	<p><b>MAR403 K - 8A - □ - □ - E1 - □ - □</b></p> <p>MODEL: Blank: Standard, K: Backflow function</p> <p>PORT SIZE: 8A: 1/4, 10A: 3/8, 15A: 1/2</p> <p>EXHAUST MECHANISM: Blank: Relieving type, Q: Non-relieving type</p> <p>(Option) PRESSURE SWITCH: E1: MP41P-022, E2: MP41P-022-QD, E5: MP41P-042, E6: MP41P-042-QD</p> <p>PORT THREAD: Blank: Rc thread, G: G thread, NPT: NPT thread</p> <p>(Option) ACCESSORIES</p> <table border="1"> <thead> <tr> <th>Type</th> <th>Pressure gauge</th> <th>Pressure switch</th> </tr> </thead> <tbody> <tr> <td>Blank: Standard type</td> <td>Blank: Pressure gauge (PG-20) C: External pressure gauge (PG-40) + Gauge adapter set (A-MAR302) A: Gauge adapter set (A-MAR302)</td> <td>P: Pressure switch (MPS series)</td> </tr> </tbody> </table>	Type	Pressure gauge	Pressure switch	Blank: Standard type	Blank: Pressure gauge (PG-20) C: External pressure gauge (PG-40) + Gauge adapter set (A-MAR302) A: Gauge adapter set (A-MAR302)	P: Pressure switch (MPS series)												
Type	Pressure gauge	Pressure switch																							
Blank: Standard type	Blank: Pressure gauge (PG-20) C: External pressure gauge (PG-40) + Gauge adapter set (A-MAR302) A: Gauge adapter set (A-MAR302)	P: Pressure switch (MPS series)																							
Type	Pressure gauge	Pressure switch																							
Blank: Standard type	Blank: Pressure gauge (PG-20) C: External pressure gauge (PG-40) + Gauge adapter set (A-MAR302) A: Gauge adapter set (A-MAR302)	P: Pressure switch (MPS series)																							