



2016/06/01

MVAA-150/180/220/260/300/460 Series
Rear Cover Exterior、Color and Screw Change Notification

Thank you for your continuous support on Mindman product for these years. We would like to change the rear cover exterior、color and screw type on MVAA-150/180/220/260/300/460 Series Pilot Valve. Sorry for any inconvenience may occur.

1. Product Series

MVAA-150/180/220/260/300/460.

2. Design Change Reason

To strengthen the company identification and unify the brand image.

3. Design Change

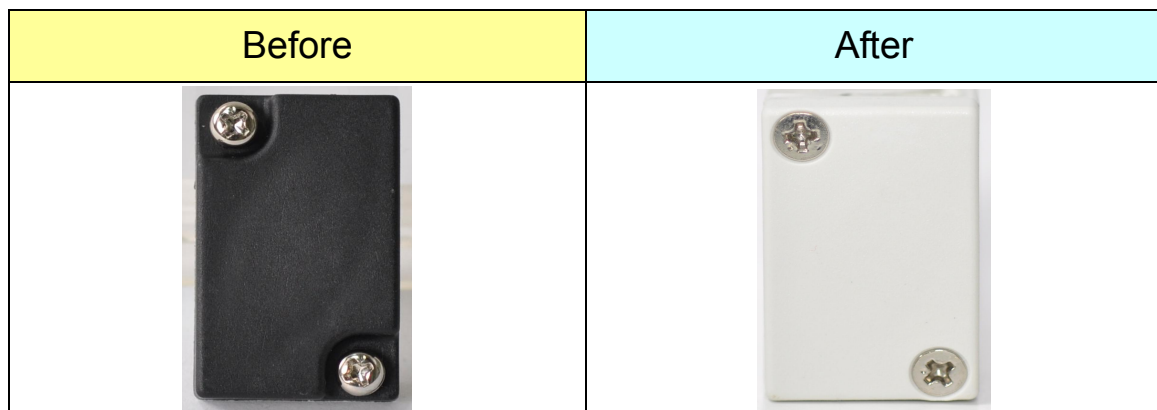
3.1 Rear cover screw Change :

Product	Before	After
MVAA-220-3A1	M3x0.5x8L	M3x0.5x10L
MVAA-220-4A1		
MVAA-300-3A1	M4x0.7x10L	M4x0.7x10.5L (Screw Headφ7)
MVAA-460-3A1		
MVAA-260-4A1		M4x0.7x12L (Screw Headφ7)
MVAA-300-4A1		
MVAA-460-4A1		

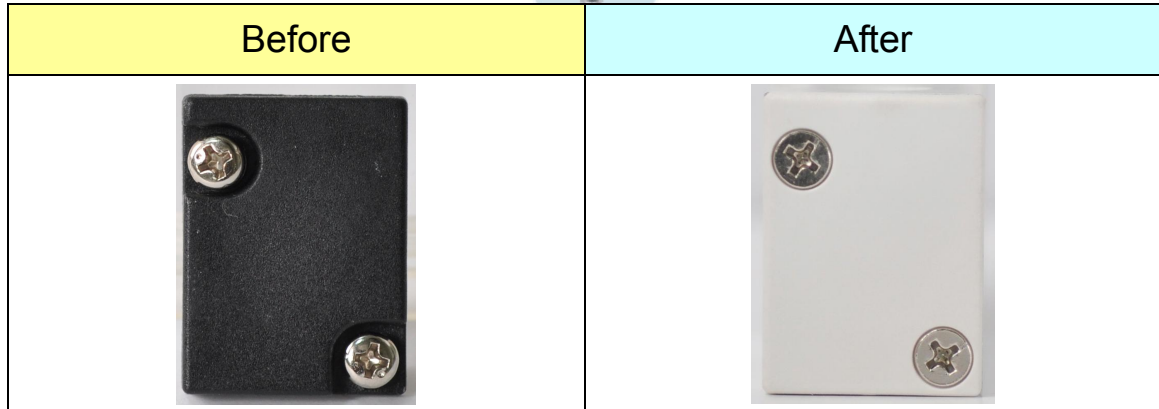
Note : MVAA-150/180 Series not change for rear cover exterior and screw.

3.2 Rear cover exterior and color change :

A. MVAA-220 Series : Example: MVAA-220-4A1



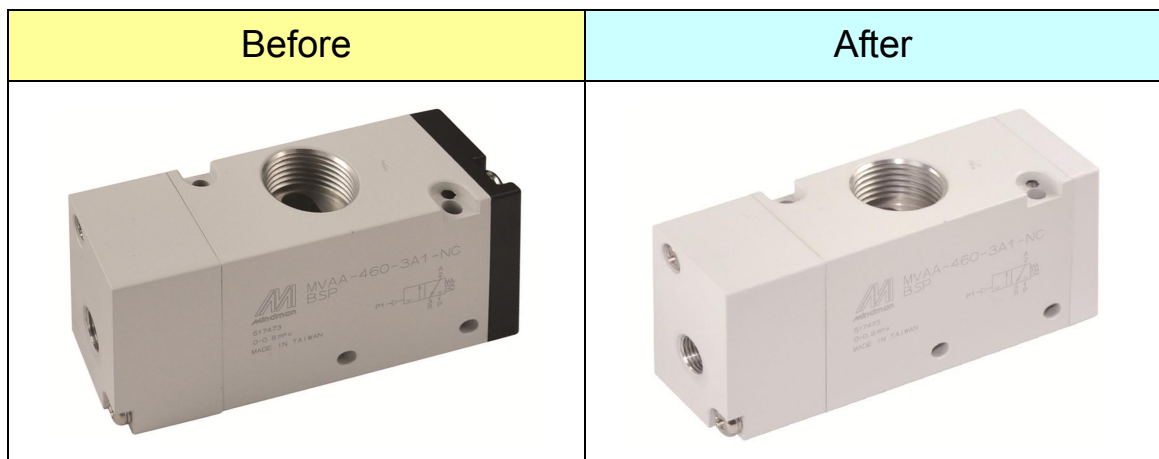
B. MVAA-260 Series : Example: MVAA-260-4A1



C.MVAA-300/460 Series : Example: MVAA-300-4A1



D.Exterior Change : Example: MVAA-300-3A1



4. Effective Date

Do not affect the usage, will change sequentially.

5. If you have any problem, please contact your sales representative.