

Sep 30th , 2024

MEQI / MEGT / METFB Ordering Code Update

Thank you for supporting Mindman products. The design change will apply to the following models. Sorry for any inconvenience may occur. Please kindly understand and cooperate.

1. Model series

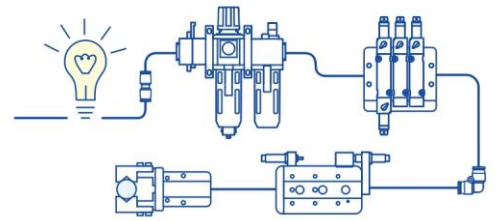
MEQI / MEGT / METFB series.

2. Design change reason

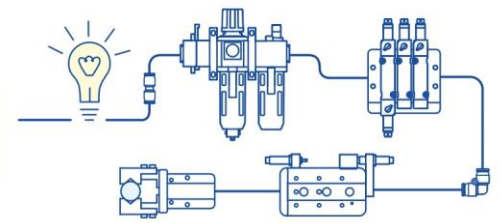
Add additional ordering codes for step motor option.

3. Change descriptions

	MEQI — 50 L05 — 200 — BC — S 56									
Before	Model	Size	Ball screw lead	Stroke	Size	Motor position	Flange (For motor installation)			
		32	L01 1 mm L02 2 mm	100~400 100~600	32 40	BC Direct connection BA Turned	Applicable motor brand (*1)	Dimensions	Size	
		40 50 63 80	L05 5 mm L10 10 mm L20 20 mm	100~800 100~1000	50 63,80		M Mitsubishi Yaskawa Delta	10 50/100W servo 40 200/400W servo 75 750W servo	32, 40 50, 63 80	
		80	L32 32 mm				P Panasonic	10 50/100W servo 40 400W servo 75 750W servo	32, 40 50, 63 80	
							S Mindman	42 □42 Step (*2)	32, 40	
							B Mindman	56 □56 Step (*2)	50, 63	
	*1. Motor not included. Please refer to the "Motor Selection Table" on page 4-122 for details. *2. Step motors are without brake.									
After	Electric cylinder without motor Optional with step motor (*2)									
	MEQI— 50 L05 — 200 — BC — S56 — CK10 03 N 015									
	①	②	③	④	⑤	⑥	⑦	⑧	⑨	
	Size	Ball screw lead	Stroke	Size	Flange (For motor installation)	Controller	Motor	Power + Encoder cable of motor		
	32	L01 1 mm L02 2 mm	100~400 100~600	32 40	Applicable motor brand (*1) M Mitsubishi Yaskawa Delta	CK10 CM20 *	SM (for S42, S56) BM (for B42, B56)	01 1 m (CM20 only) 015 1.5 m (CK10 only) 03 3 m (stanadrd) 05 5 m		
	40 50 63 80	L05 5 mm L10 10 mm L20 20 mm	100~800 100~1000	50 63,80	P Panasonic					
	80	L32 32 mm								
					Motor position				I/O type	I/O cable length
					BC Direct connection BA Turned	S Mindman B Mindman	42 □42 Step NEMA 17 56 □56 Step NEMA 23	32, 40 50, 63	N NPN	015 1.5 m (stanadrd) 03 3 m
	*1. Motor not included. Please refer to the "Motor Selection Table" on page 4-122 for details. *2. For the optional transmission cable (CK10-C035) for controller management, please refer to page 4-129.									



Before	MEGTX – 50 L05 – 200 – BC – S 56 – RP											
	Rear flange coupling (*2)											
After	Electric cylinder without motor Optional with step motor (*3)											
	MEGTX – 50 L05 – 200 – BC – S56 – RP – CK10 03 N 015											
	① ② ③ ④ ⑤ ⑥ ⑦ ⑧ ⑨ ⑩ ⑪											
	①	②		③		④		⑥		⑧		⑨
	⑤	⑦		⑩		⑪		⑫	⑬		⑭	⑮
	①	②	③	④	⑤	⑥	⑦	⑧	⑨	⑩	⑪	⑫
	①	②	③	④	⑤	⑥	⑦	⑧	⑨	⑩	⑪	⑫
	①	②	③	④	⑤	⑥	⑦	⑧	⑨	⑩	⑪	⑫
	①	②	③	④	⑤	⑥	⑦	⑧	⑨	⑩	⑪	⑫
	①	②	③	④	⑤	⑥	⑦	⑧	⑨	⑩	⑪	⑫
①	②	③	④	⑤	⑥	⑦	⑧	⑨	⑩	⑪	⑫	
①	②	③	④	⑤	⑥	⑦	⑧	⑨	⑩	⑪	⑫	
①	②	③	④	⑤	⑥	⑦	⑧	⑨	⑩	⑪	⑫	
①	②	③	④	⑤	⑥	⑦	⑧	⑨	⑩	⑪	⑫	
①	②	③	④	⑤	⑥	⑦	⑧	⑨	⑩	⑪	⑫	
①	②	③	④	⑤	⑥	⑦	⑧	⑨	⑩	⑪	⑫	
①	②	③	④	⑤	⑥	⑦	⑧	⑨	⑩	⑪	⑫	
①	②	③	④	⑤	⑥	⑦	⑧	⑨	⑩	⑪	⑫	
①	②	③	④	⑤	⑥	⑦	⑧	⑨	⑩	⑪	⑫	
①	②	③	④	⑤	⑥	⑦	⑧	⑨	⑩	⑪	⑫	
①	②	③	④	⑤	⑥	⑦	⑧	⑨	⑩	⑪	⑫	
①	②	③	④	⑤	⑥	⑦	⑧	⑨	⑩	⑪	⑫	
①	②	③	④	⑤	⑥	⑦	⑧	⑨	⑩	⑪	⑫	
①	②	③	④	⑤	⑥	⑦	⑧	⑨	⑩	⑪	⑫	
①	②	③	④	⑤	⑥	⑦	⑧	⑨	⑩	⑪	⑫	
①	②	③	④	⑤	⑥	⑦	⑧	⑨	⑩	⑪	⑫	
①	②	③	④	⑤	⑥	⑦	⑧	⑨	⑩	⑪	⑫	
①	②	③	④	⑤	⑥	⑦	⑧	⑨	⑩	⑪	⑫	
①	②	③	④	⑤	⑥	⑦	⑧	⑨	⑩	⑪	⑫	
①	②	③	④	⑤	⑥	⑦	⑧	⑨	⑩	⑪	⑫	
①	②	③	④	⑤	⑥	⑦	⑧	⑨	⑩	⑪	⑫	
①	②	③	④	⑤	⑥	⑦	⑧	⑨	⑩	⑪	⑫	
①	②	③	④	⑤	⑥	⑦	⑧	⑨	⑩	⑪	⑫	
①	②	③	④	⑤	⑥	⑦	⑧	⑨	⑩	⑪	⑫	
①	②	③	④	⑤	⑥	⑦	⑧	⑨	⑩	⑪	⑫	
①	②	③	④	⑤	⑥	⑦	⑧	⑨	⑩	⑪	⑫	
①	②	③	④	⑤	⑥	⑦	⑧	⑨	⑩	⑪	⑫	
①	②	③	④	⑤	⑥	⑦	⑧	⑨	⑩	⑪	⑫	
①	②	③	④	⑤	⑥	⑦	⑧	⑨	⑩	⑪	⑫	
①	②	③	④	⑤	⑥	⑦	⑧	⑨	⑩	⑪	⑫	
①	②	③	④	⑤	⑥	⑦	⑧	⑨	⑩	⑪	⑫	
①	②	③	④	⑤	⑥	⑦	⑧	⑨	⑩	⑪	⑫	
①	②	③	④	⑤	⑥	⑦	⑧	⑨	⑩	⑪	⑫	
①	②	③	④	⑤	⑥	⑦	⑧	⑨	⑩	⑪	⑫	
①	②	③	④	⑤	⑥	⑦	⑧	⑨	⑩	⑪	⑫	
①	②	③	④	⑤	⑥	⑦	⑧	⑨	⑩	⑪	⑫	
①	②	③	④	⑤	⑥	⑦	⑧	⑨	⑩	⑪	⑫	
①	②	③	④	⑤	⑥	⑦	⑧	⑨	⑩	⑪	⑫	
①	②	③	④	⑤	⑥	⑦	⑧	⑨	⑩	⑪	⑫	
①	②	③	④	⑤	⑥	⑦	⑧	⑨	⑩	⑪	⑫	
①	②	③	④	⑤	⑥	⑦	⑧	⑨	⑩	⑪	⑫	
①	②	③	④	⑤	⑥	⑦	⑧	⑨	⑩	⑪	⑫	
①	②	③	④	⑤	⑥	⑦	⑧	⑨	⑩	⑪	⑫	
①	②	③	④	⑤	⑥	⑦	⑧	⑨	⑩	⑪	⑫	
①	②	③	④	⑤	⑥	⑦	⑧	⑨	⑩	⑪	⑫	
①	②	③	④	⑤	⑥	⑦	⑧	⑨	⑩	⑪	⑫	
①	②	③	④	⑤	⑥							



Before	METFB-25 N - 1000 BW - S42																																									
	Model <table border="1"> <tr><th colspan="2">Guide installation</th></tr> <tr><td>N</td><td>Without guide</td></tr> <tr><td>GR</td><td>Guide right side</td></tr> <tr><td>GL</td><td>Guide left side</td></tr> </table>		Guide installation		N	Without guide	GR	Guide right side	GL	Guide left side	Size <table border="1"> <tr><td>100~1000 mm</td></tr> </table>		100~1000 mm	Stroke <table border="1"> <tr><td>100~1000 mm</td></tr> </table>		100~1000 mm	Motor position <table border="1"> <tr><td>BW</td><td>Top side</td></tr> <tr><td>BM</td><td>Down side</td></tr> </table>		BW	Top side	BM	Down side	Flange (For motor installation) <table border="1"> <thead> <tr> <th colspan="2">Applicable motor brand (*1)</th> <th colspan="2">Dimensions</th> </tr> </thead> <tbody> <tr> <td rowspan="3">M</td> <td>Mitsubishi</td> <td rowspan="3">10</td> <td rowspan="3">50/100W Servo</td> </tr> <tr><td>Yaskawa</td></tr> <tr><td>Delta</td></tr> <tr> <td>P</td> <td>Panasonic</td> <td></td> <td></td> </tr> <tr> <td>S</td> <td rowspan="2">Mindman</td> <td rowspan="2">42</td> <td rowspan="2">□42 Step (*2)</td> </tr> <tr> <td>B</td> </tr> </tbody> </table>		Applicable motor brand (*1)		Dimensions		M	Mitsubishi	10	50/100W Servo	Yaskawa	Delta	P	Panasonic			S	Mindman	42	□42 Step (*2)
Guide installation																																										
N	Without guide																																									
GR	Guide right side																																									
GL	Guide left side																																									
100~1000 mm																																										
100~1000 mm																																										
BW	Top side																																									
BM	Down side																																									
Applicable motor brand (*1)		Dimensions																																								
M	Mitsubishi	10	50/100W Servo																																							
	Yaskawa																																									
	Delta																																									
P	Panasonic																																									
S	Mindman	42	□42 Step (*2)																																							
B																																										
		<p>*1. Motor not included. Please refer to the "Motor Selection Table" on page 4-122 for details.</p> <p>*2. Step motors are without brake.</p>																																								
After	METFB-25 N - 1000 BW - S42 - CK10 03 N 015																																									
	Electric cylinder without motor				Optional with step motor (*2)																																					
	Model <table border="1"> <tr><td>N</td><td>Without guide</td></tr> <tr><td>GR</td><td>Guide right side</td></tr> <tr><td>GL</td><td>Guide left side</td></tr> </table>		N	Without guide	GR	Guide right side	GL	Guide left side	Size <table border="1"> <tr><td>100~1000 mm</td></tr> </table>		100~1000 mm	Stroke <table border="1"> <tr><td>100~1000 mm</td></tr> </table>		100~1000 mm	Motor position <table border="1"> <tr><td>BW</td><td>Top side</td></tr> <tr><td>BM</td><td>Down side</td></tr> </table>		BW	Top side	BM	Down side	Flange (For motor installation) <table border="1"> <thead> <tr> <th colspan="2">Applicable motor brand *1</th> <th colspan="2">Dimensions</th> </tr> </thead> <tbody> <tr> <td rowspan="3">M</td> <td>Mitsubishi</td> <td rowspan="3">10</td> <td rowspan="3">50/100W Servo</td> </tr> <tr><td>Yaskawa</td></tr> <tr><td>Delta</td></tr> <tr> <td>P</td> <td>Panasonic</td> <td></td> <td></td> </tr> <tr> <td>S</td> <td rowspan="2">Mindman</td> <td rowspan="2">42</td> <td rowspan="2">□42 Step NEMA 17</td> </tr> <tr> <td>B</td> </tr> </tbody> </table>		Applicable motor brand *1		Dimensions		M	Mitsubishi	10	50/100W Servo	Yaskawa	Delta	P	Panasonic			S	Mindman	42	□42 Step NEMA 17	B	
	N	Without guide																																								
	GR	Guide right side																																								
	GL	Guide left side																																								
	100~1000 mm																																									
	100~1000 mm																																									
BW	Top side																																									
BM	Down side																																									
Applicable motor brand *1		Dimensions																																								
M	Mitsubishi	10	50/100W Servo																																							
	Yaskawa																																									
	Delta																																									
P	Panasonic																																									
S	Mindman	42	□42 Step NEMA 17																																							
B																																										
Controller <table border="1"> <tr><td>CK10</td><td>SM (for S42)</td></tr> <tr><td>CM20 *</td><td>BM (for B42)</td></tr> </table>		CK10	SM (for S42)	CM20 *	BM (for B42)	Motor <table border="1"> <tr><td>SM</td><td>(for S42)</td></tr> <tr><td>BM</td><td>(for B42)</td></tr> </table>		SM	(for S42)	BM	(for B42)	Power + Encoder cable of motor <table border="1"> <tr><td>01</td><td>1 m (CM20 only)</td></tr> <tr><td>015</td><td>1.5 m (CK10 only)</td></tr> <tr><td>03</td><td>3 m (standard)</td></tr> <tr><td>05</td><td>5 m</td></tr> </table>		01	1 m (CM20 only)	015	1.5 m (CK10 only)	03	3 m (standard)	05	5 m	I/O type <table border="1"> <tr><td>N</td><td>NPN</td></tr> </table>		N	NPN	I/O cable length <table border="1"> <tr><td>015</td><td>1.5 m (standard)</td></tr> <tr><td>03</td><td>3 m</td></tr> </table>		015	1.5 m (standard)	03	3 m											
CK10	SM (for S42)																																									
CM20 *	BM (for B42)																																									
SM	(for S42)																																									
BM	(for B42)																																									
01	1 m (CM20 only)																																									
015	1.5 m (CK10 only)																																									
03	3 m (standard)																																									
05	5 m																																									
N	NPN																																									
015	1.5 m (standard)																																									
03	3 m																																									
<p>*1. Motor not included. Please refer to the "Motor Selection Table" on page 4-122 for details.</p> <p>*2. For the optional transmission cable (CK10-C035) for controller management, please refer to page 4-129.</p>																																										

4. Effective date

It takes effect immediately.

5. If there is any question, please contact our sales department.