

Nov 21st, 2024

The new rodless cylinder model MCRPL(F)2 is now replacing the MCRPL(F) model, featuring integrated sensor functionality.

Thank you for supporting Mindman products. The design change will apply to the following models. We apologize for any inconvenience this may cause and appreciate your understanding and cooperation.

1. Model series

MCRPL-Ø16~Ø40 and MCRPLF-Ø16~Ø63.

2. Design change reason

- ◆ Various sensors have been integrated into the RDT model for simplification.
- ◆ Due to a profile change, the old MCRPL(F) model has been replaced by the new MCRPL(F)2 model.
- ◆ In order to be compatible with the new sensor, the profile size of Ø32/Ø40 needs to be changed, as the table displays.

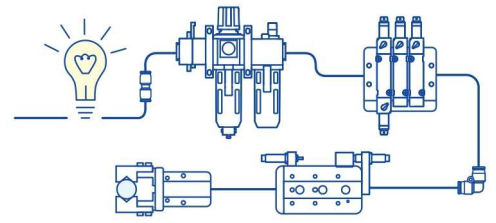
3. Change descriptions

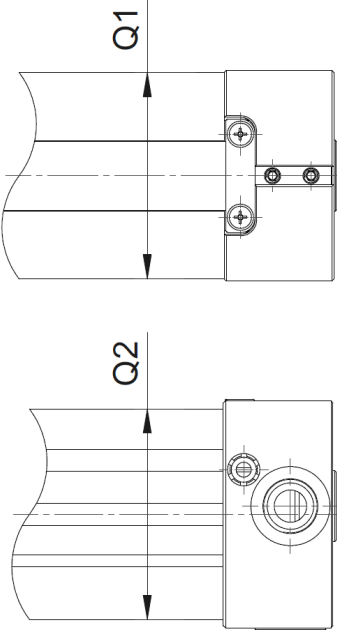
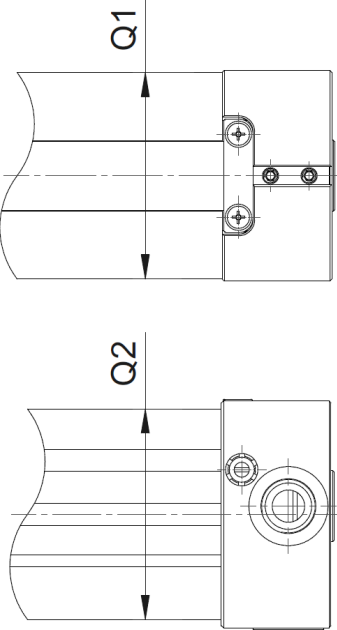
Please see the tables in page 2 and 3.

4. Effective date

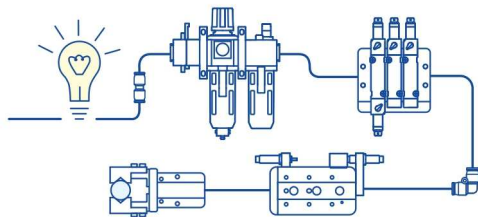
- ◆ New product MCRPL(F)2: On sale starting March 10st, 2025.
- ◆ Old product MCRPL(F): Will be phased out after the launch of the new product.

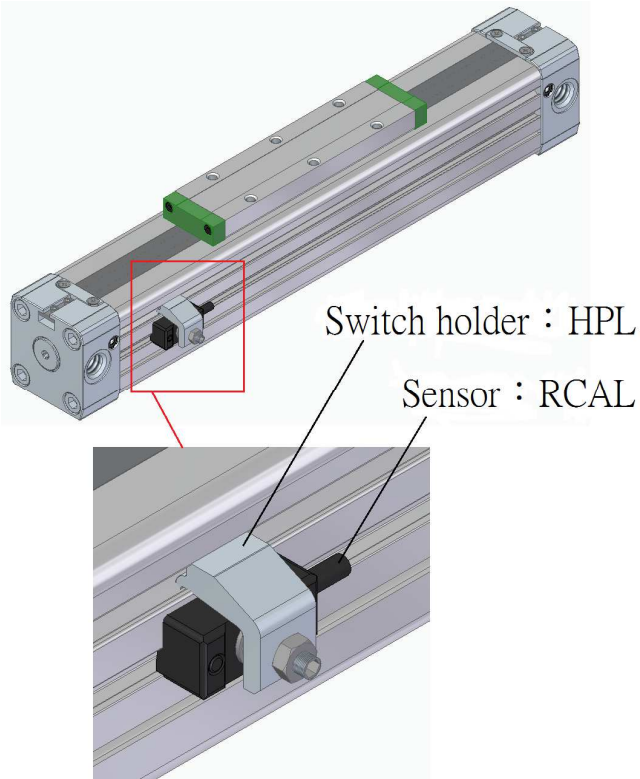
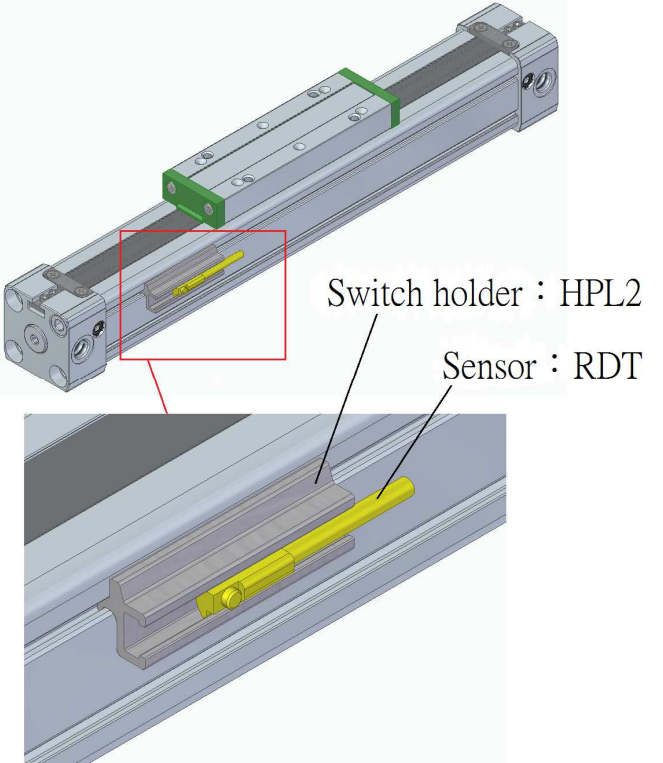
5. If there are any questions, please contact our sales department.



Before	After																		
<p>1. Model :</p> <p style="text-align: center;">MCRPL MCRPLF</p>	<p>1. Model :</p> <p style="text-align: center;">MCRPL2 MCRPLF2</p>																		
<p>2.</p> <div style="text-align: center;">  </div> <table border="1" style="margin-left: auto; margin-right: auto;"> <thead> <tr> <th>Tube I.D.</th> <th>Q1</th> <th>Q2</th> </tr> </thead> <tbody> <tr> <td>32</td> <td>48</td> <td>52</td> </tr> <tr> <td>40</td> <td>58</td> <td>58</td> </tr> </tbody> </table>	Tube I.D.	Q1	Q2	32	48	52	40	58	58	<p>2.</p> <div style="text-align: center;">  </div> <table border="1" style="margin-left: auto; margin-right: auto;"> <thead> <tr> <th>Tube I.D.</th> <th>Q1</th> <th>Q2</th> </tr> </thead> <tbody> <tr> <td>32</td> <td>51</td> <td>52</td> </tr> <tr> <td>40</td> <td>59</td> <td>58.5</td> </tr> </tbody> </table>	Tube I.D.	Q1	Q2	32	51	52	40	59	58.5
Tube I.D.	Q1	Q2																	
32	48	52																	
40	58	58																	
Tube I.D.	Q1	Q2																	
32	51	52																	
40	59	58.5																	

Product Change Notification
設變通報



Before	After	
<p>MCRPLF-Ø16~Ø63 sensor</p> 	<p>MCRPLF2-Ø16 / Ø25 sensor</p> 	<p>MCRPLF2-Ø32~Ø63 sensor</p> 