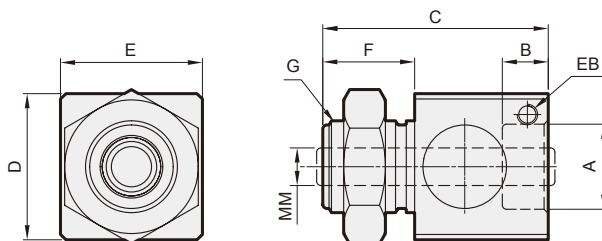
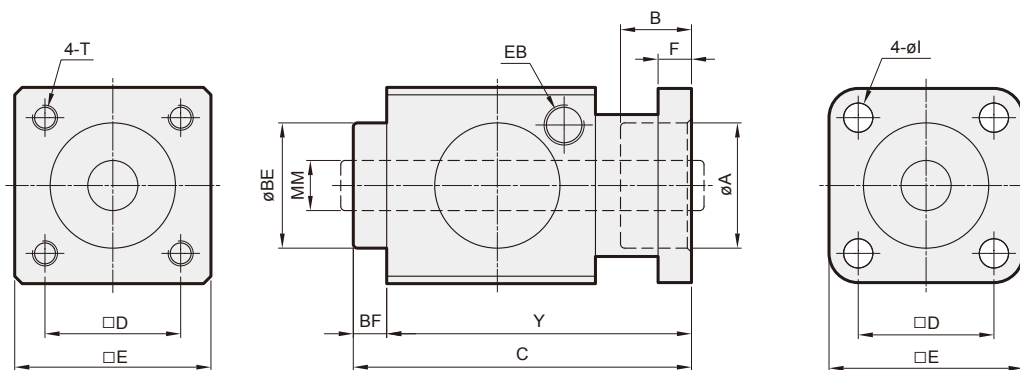


$\phi 20, \phi 25$



代號 內徑	A	B	C	D	E	EB	F	G	MM
20	M22×1.5	11	54	35	34	M5	22	M22×1.5	$\phi 8^{T7}$
25	M22×1.5	11	54	35	34	M5	22	M22×1.5	$\phi 10^{T7}$

$\phi 32\sim\phi 125$



代號 內徑	A	B	BE	BF	C	D	E	F	EB	I	MM	T	Y
32	30.5	20.5	30	7.5	67.5	32.5	47	6	G1/8	6.5	$\phi 12^{T7}$	M6×8L	60
40	35.5	22.5	34.9	10	80	38	54	6	G1/8	6.5	$\phi 16^{T7}$	M6×8L	70
50	40.5	29	40	10	100	46.5	65	8	G1/8	9	$\phi 20^{T7}$	M8×12L	90
63	45.5	29	45	10	100	56.5	75	8	G1/8	9	$\phi 20^{T7}$	M8×12L	90
80	45.5	37	45	10	120	72	95	12	G1/4	11	$\phi 25^{T7}$	M10×16L	110
100	55.5	39	55	10	120	89	114	12	G1/4	11	$\phi 25^{T7}$	M10×16L	110
125	60.5	51.5	60	16	156	110	138	20	G1/4	13	$\phi 32^{T7}$	M12×20L	140