

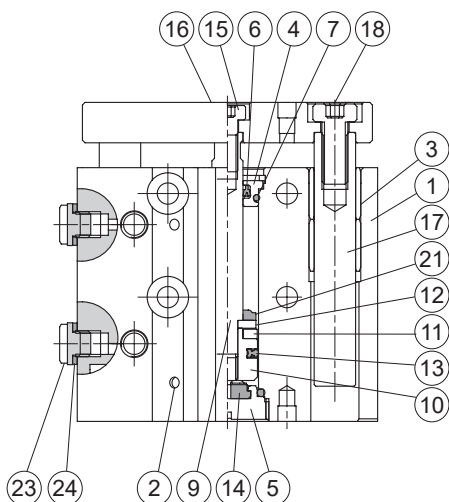
MCGS-03 Inside structure & Parts list



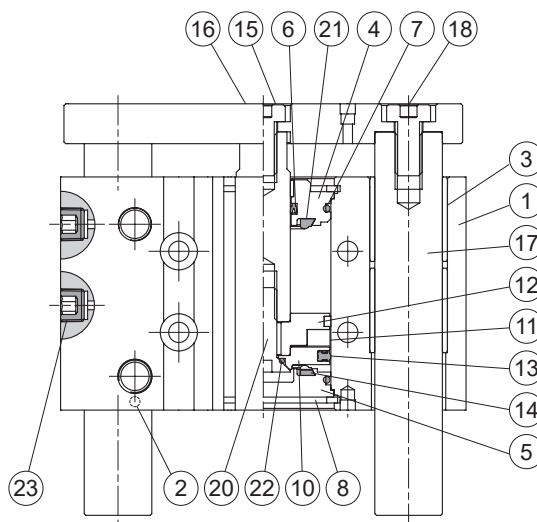
TWIN-GUIDE CYLINDER

mindman

ø12~ø16



ø20~ø63



Material

No.	Tube I.D. Part name	12	16	20	25	32	40	50	63	Qty	Repair kits (inclusion)
1	Body	Aluminum alloy								1	
2	Ball	Stainless steel								1~3	
3	Slide bush	Bronze alloy				Bearing alloy				4	
4	Rod cover	Aluminum alloy								1	
5	Head cover	(*1)	Carbon steel			Aluminum alloy			1		
6	Rod packing	NBR								1	●
7	Cover ring	NBR								2	●
8	Snap ring	Spring steel								2	
9	Piston rod	Stainless steel			Carbon steel			1			
10	Piston	Aluminum alloy								1	
11	Magnet ring	Magnet material								1	
12	Magnet holder	Stainless steel				Aluminum alloy				1	
13	Piston packing	NBR								1	●
14	Head cushion	NBR								1	●
15	Bolt	SCM								1	
16	Plate	Carbon steel								1	
17	Guide rod	Carbon steel								2	
18	Screw	SCM								2	
19	Rod bush	—			Bearing alloy				1		
20	Piston bolt	—			SCM				1		
21	Rod cushion	NBR								1	●
22	Piston gasket	—			NBR				1	●	
23	Screw	Bronze alloy		Carbon steel (*2)						2	
24	Washer	PET		—						2	

*1. Aluminum alloy *2. The material changes into bronze alloy when the part thread is BSPF. (JISPF)

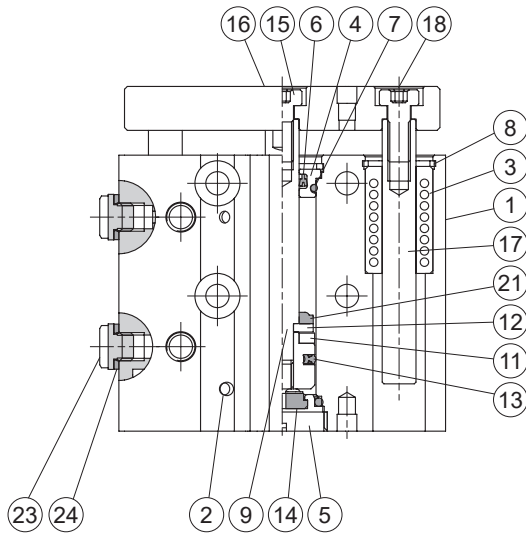
Order example of repair kits

Tube I.D.	Repair kits
ø12	PS-MCGS-12
ø16	PS-MCGS-16
ø20	PS-MCGS-20
ø25	PS-MCGS-25
ø32	PS-MCGS-32
ø40	PS-MCGS-40
ø50	PS-MCGS-50
ø63	PS-MCGS-63

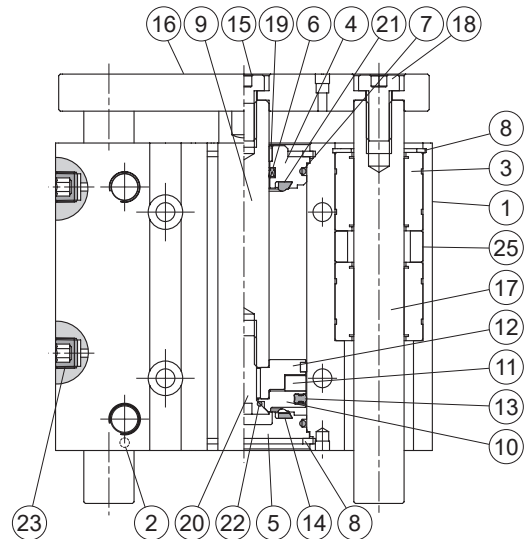
Cylinder weight Unit: g

Model	Basic weight MCGS-03	Stroke 5mm MCGS-03
Tube I.D.		
ø12	191	21
ø16	283	28
ø20	450	45
ø25	670	63
ø32	1,210	90
ø40	1,474	88
ø50	2,540	140
ø63	3,295	151

ø12~ø16



ø20~ø63



Material

No.	Tube I.D. Part name	12	16	20	25	32	40	50	63	Q'y	Repair kits (inclusion)	
1	Body	Aluminum alloy								1		
2	Ball	Stainless steel								1~3		
3	Linear bearing	—								2 or 4		
4	Rod cover	Aluminum alloy								1		
5	Head cover	(*1)	Carbon steel			Aluminum alloy				1		
6	Rod packing	NBR								1	●	
7	Cover ring	NBR								2	●	
8	Snap ring	Spring steel								2		
9	Piston rod	Stainless steel			Carbon steel					1		
10	Piston	Aluminum alloy								1		
11	Magnet ring	Magnet material								1		
12	Magnet holder	Stainless steel			Aluminum alloy					1		
13	Piston packing	NBR								1	●	
14	Head cushion	NBR								1	●	
15	Bolt	SCM								1		
16	Plate	Carbon steel								1		
17	Guide rod	Special steel								2		
18	Screw	SCM								2		
19	Rod bush	—			Bearing alloy					1		
20	Piston bolt	—			SCM					1		
21	Rod cushion	NBR								1	●	
22	Piston gasket	—			NBR					1	●	
23	Screw	Bronze alloy	Carbon steel (*2)								2	
24	Washer	PET	—								2	
25	Collar (*3)	Aluminum alloy	Carbon steel								2	

Order example of repair kits

Tube I.D.	Repair kits
ø12	PS-MCGS-12
ø16	PS-MCGS-16
ø20	PS-MCGS-20
ø25	PS-MCGS-25
ø32	PS-MCGS-32
ø40	PS-MCGS-40
ø50	PS-MCGS-50
ø63	PS-MCGS-63

Cylinder weight

Unit: g

Model	Basic weight MCGS-23	Stroke 5mm MCGS-23
Tube I.D.		
ø12	211	18
ø16	260	30
ø20	470	45
ø25	740	60
ø32	1,170	85
ø40	1,300	98
ø50	2,360	150
ø63	3,010	168

*1. Aluminum alloy *2. The material changes into bronze alloy when the part thread is BSPF. (JISPF) *3. Use for stroke 101 or more.