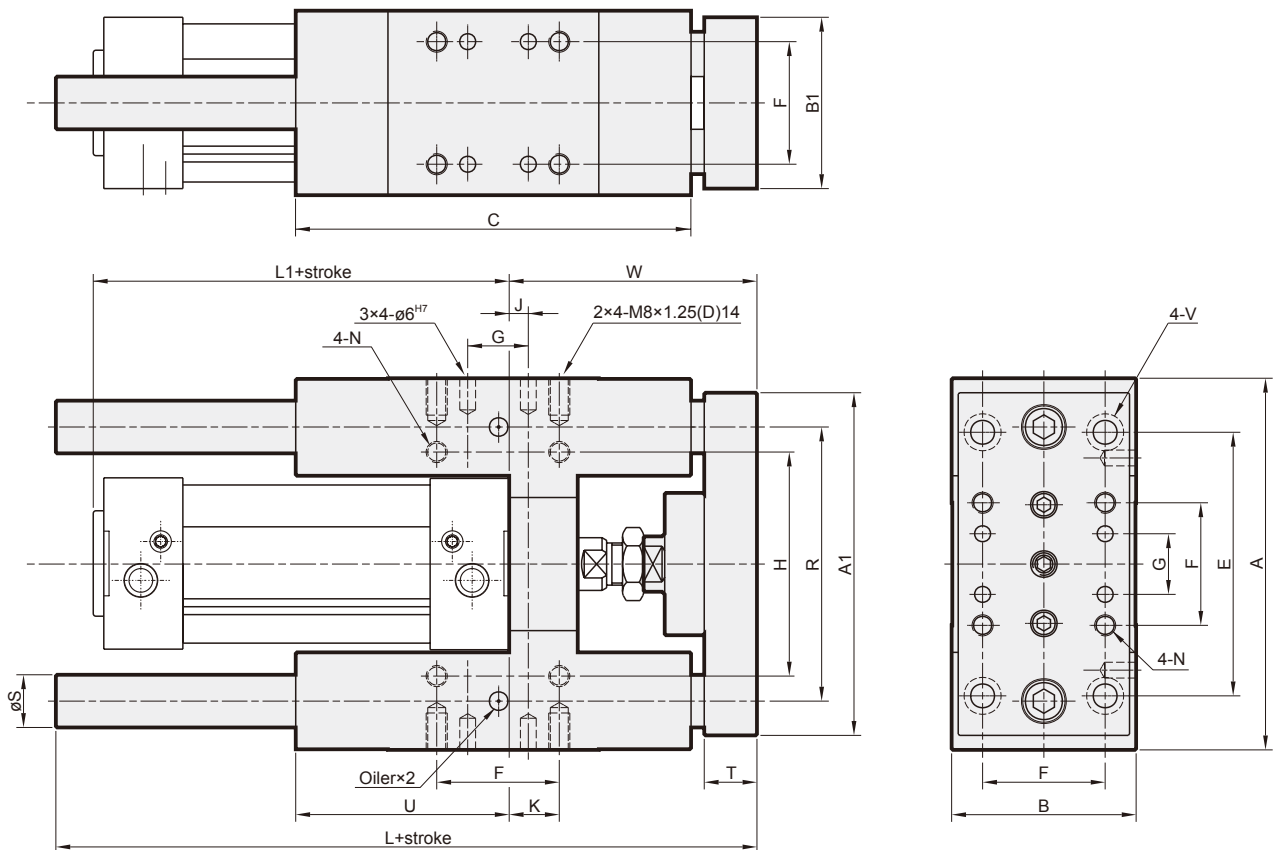


TWIN-GUIDE CYLINDER

MGTB (Brass bush guide)

MGTU (Linear bearing guide)

$\varnothing 50, \varnothing 63$



Code Tube I.D.	A	A1	B	B1	C	E	F	G	H	J	K	L	L1	N	R	S	T	U	V	W
50	141	135	70	65	150	100	46.5	23	85	7.5	19	216	110	M8x1.25 thru	104	20	20	81	$\varnothing 9, \varnothing 14(D)8.5$	94
63	156	150	80	75	165	105	56.5	28	100	5	19	230	125	M8x1.25 thru	119	20	20	96	$\varnothing 9, \varnothing 14(D)8.5$	94

Maximum allowable torque moment

Max. allowable load

MGTB / MGTU $\varnothing 50, \varnothing 63$

