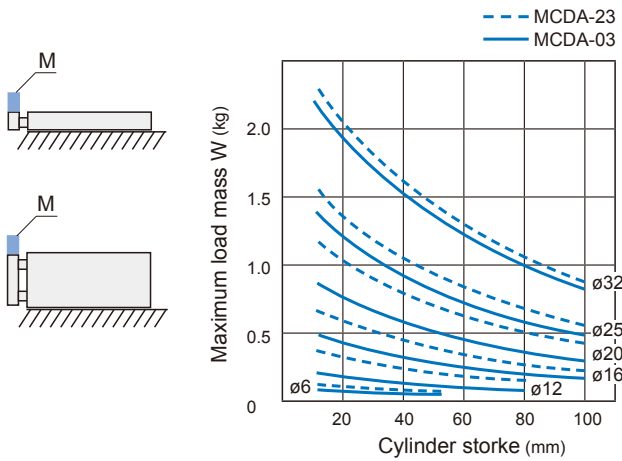


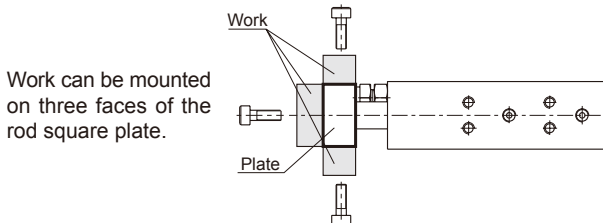
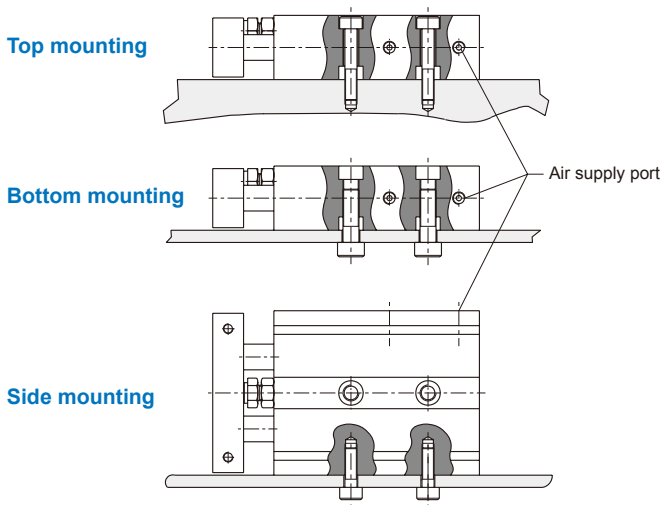
DUAL-ROD CYLINDER

Maximum load mass

When the cylinder mounted as shown in the diagrams below, the maximum load mass W should not exceed the values illustrated in the graph.

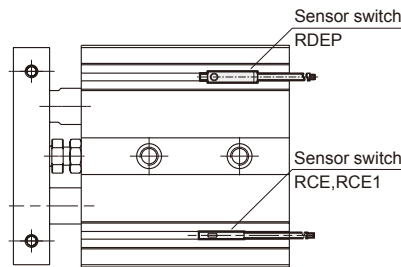
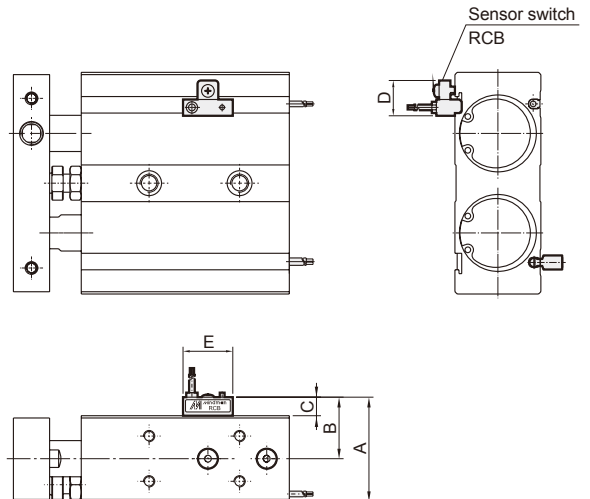


Mounting methods



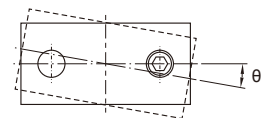
Installation of sensor switch

Sensor switch: RCB, RCE, RCE1, RDEP



Code Tube I.D.	A	B	C	D	E
12	26.5	17.5	8.5	16	22
16	28.5	18.5	8.5	16	22
20	33.5	21	8.5	16	22
25	38.5	23.5	8.5	16	22
32	46.5	27.5	8.5	16	22

Anti-roll accuracy



Code Type	θ				
	ø6	ø12	ø16	ø20	ø25, ø32
MCDA-03	±0.3°	±0.45°	±0.35°	±0.3°	±0.25°
MCDA-23	±0.25°		±0.2°		±0.15°