

Features

- 50% space saving when compared to conventional cylinders.
- Multi ported endcaps as standard.
- Reed switches available.
- Magnetic as standard.

Specification

Model	MCRPL			MCRPLF			
Acting type	Double acting			Double acting			
Tube I.D.(mm)	16	25	32,40	16	25	32,40,50	63
Port size	M5	G1/8	G1/4	M5	G1/8	G1/4	G3/8
No. of port	3						
Medium	Air						
Operating pressure range	0.1~0.78 MPa						
Stroke range (*1)	ø16	100~3000 mm					
	ø25~63	100~5600 mm					
Ambient Temperature	-10°C~+80°C (No freezing)						
Lubrication	With or without lubrication						
Cushion	With adjustable cushion at both ends						
Sensor Switch	RCAL (Please refer to page 6-9)						
Sensor Switch Holder	HPL						

*1. Minimum stroke unit 1mm.

*2. The tube isn't airtight, so the cylinder is allowed little leakage.
Before the cylinder is sale, it has passed the standard of leakage test.

Order example

MCRPL — 90V — 25 — 0850 — S

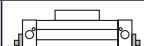
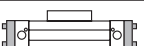
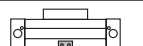

Model	Type	Tube I.D.	Stroke	Grease lubrication
MCRPL	90 Standard type	16	0100~5600 mm (4 digits)	— Standard
	98 Long piston type * Only for MCRPL	25		S Slow motion
MCRPLF	Piston seals		32	for MCRPLF
	— NBR	40	50	
	V VITON	63		

Available speed range

Piston seals	Grease lubrication	Available speed range (mm/s)
NBR	Slow motion	50~100
	Standard	Within 100~1000
VITON	Slow motion	50~200
	Standard	200~1000 above

* The suitable grease type can be selected according to the actual use.

Order example of mounting accessories

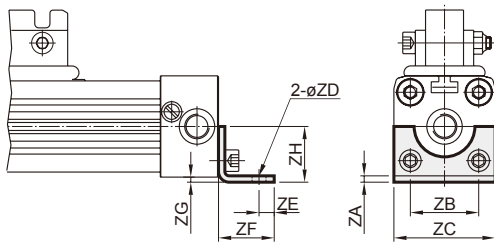
Code	LB (Purchase 2 pcs)	LB1 (Purchase 2 pcs)	MS (Mid section support)	AC (Articulated carrier)
Mounting				
Tube I.D.				
ø16	LB-P1-16	—	MS-P1-16	AC-P1-16
ø25	LB-P1-25	—	MS-P1-25	AC-P1-25
ø32	LB-P1-32	LB1-P1-32	MS-P1-32	AC-P1-32
ø40	LB-P1-40	—	MS-P1-40	AC-P1-40
ø50	LB-P1-50	—	MS-P1-50	AC-P1-50
ø63	LB-P1-63	—	MS-P1-63	AC-P1-63

RODLESS CYLINDER

LB End cover bracket (foot)

$\varnothing 16, \varnothing 25$

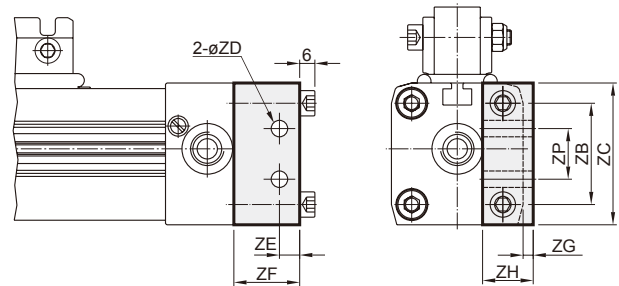
Material: Carbon steel



LB1 End cover bracket (foot)

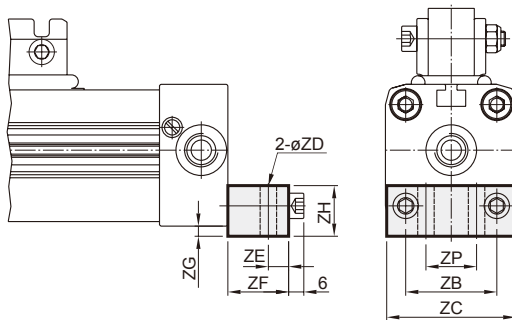
$\varnothing 32^*$

Material: Aluminum alloy



$\varnothing 32, \varnothing 40$

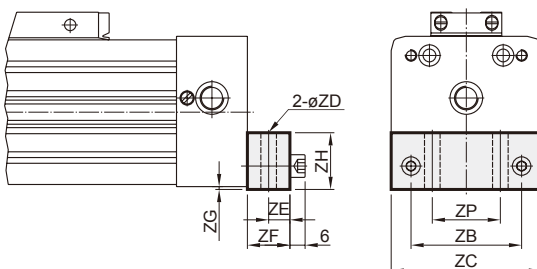
Material: Aluminum alloy



Code Tube I.D.	ZA	ZB	ZC	ZD	ZE	ZF	ZG	ZH	ZP	Weight (g)
16	1.6	18	26	3.6	4	14	1.5	12.5	—	16
25	2.5	27	40	5.5	6	22	2.5	18	—	61
32	—	36	51	6.5	8	24	4	20	20	165
32*	—	40	56	6.5	8	26	4	20	20	189
40	—	54	71	9	11.5	24	2	20	30	210
50	—	70	80	9	12.5	25	2	25	45	293
63	—	78	106	11	15	30	2	40	48	730

$\varnothing 50, \varnothing 63$

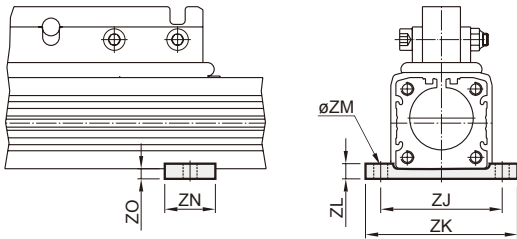
Material: Aluminum alloy



MS Mid section support (1 pc)

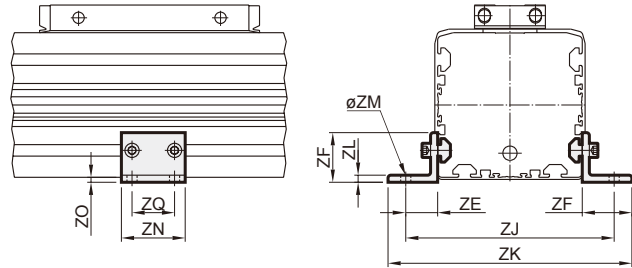
$\varnothing 16, \varnothing 25$

Material: Aluminum alloy



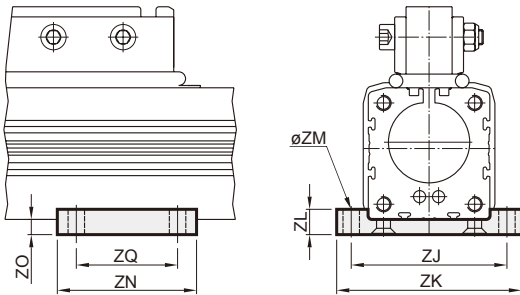
$\varnothing 50, \varnothing 63$

Material: Aluminum alloy



$\varnothing 32, \varnothing 40$

Material: Aluminum alloy



Code Tube I.D.	ZE	ZF	ZJ	ZK	ZL	ZM	ZN	ZO	ZQ	Weight (g)
16	-	-	38	50	6	5.5	20	3	-	11
25	-	-	48	60	6	5.5	20	4	-	15
32	-	-	61	73	10	6.5	55	6	40	74
40	-	-	70	85	10	6.5	60	(7.2)	45	103
50	22.0	35	120	146	4.8	6.6	45	0.5	30	56
63	22.5	35	147	172	4.8	6.6	45	3.5	30	61

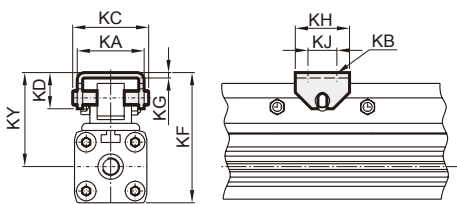
() Reference

* If mounting hole for $\varnothing 32, \varnothing 40$ mid section support bracket is required, please contact our sales representative for more information.

AC Articulated carrier

The material of articulated carrier and pin: Carbon steel

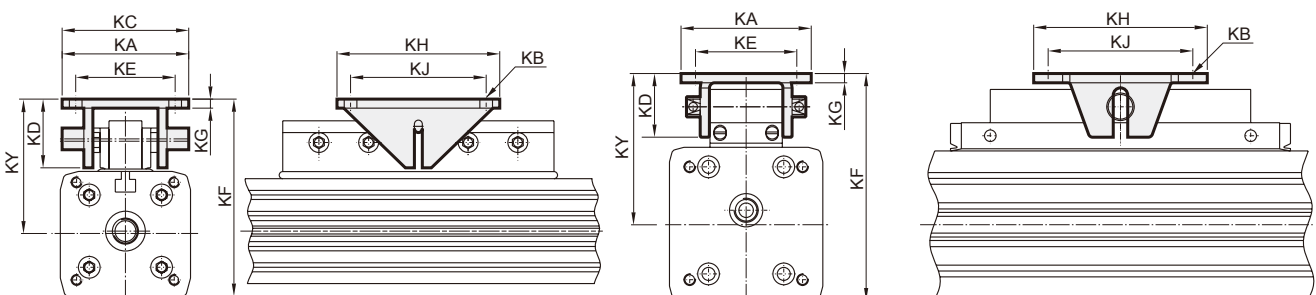
MCRPL $\varnothing 16, \varnothing 25$



Code Tube I.D.	KA	KB	KC	KD	KE	KF**	KG	KH	KJ	KY**	Weight (g)
MCRPL-16	25	4.5	28	13	-	46.5-47.5	2	20	10	33-34	36
MCRPL-25	37	5.5	42	20	-	71.5-73.5	3	30	16	51.5-53.5	117
MCRPL-32	70	6.5	70	38	55	94.5-96.5	5	90	75	66.5-68.5	446
MCRPL-40	70	6.5	70	38	55	108-110	5	90	75	73.5-75.5	446
MCRPLF-50	90	9	-	43.7	70	135-150	6.4	120	100	95-110	1576
MCRPLF-63	90	9	-	43.7	70	155-170	6.4	120	100	102-117	1223

** KF / KY dimension are variable within the length of the slot of the load friction.

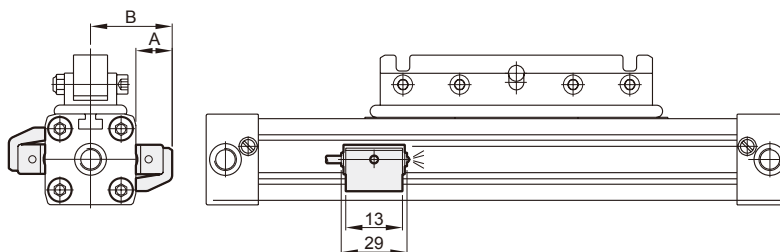
MCRPL $\varnothing 32, \varnothing 40$



Sensor switch

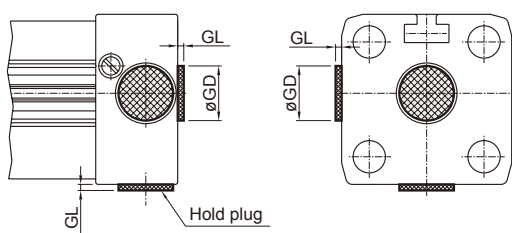
Specification

Model	RCAL
Switch type	Reed switch
Contracts	Normal open
Voltage range	DC/AC 5~240V
Current range	100 mA max.
Switch range	10W max.
Shock resistance	30 G
Voltage drop	2.5V max.
Response time	Max. 1ms
Temperature	-10~70°C
Lead wire	$\varnothing 4$, 2C, PVC
Lead wire length	3 m
Indicator lamp	LED lights up when ON
Enclosure classification	IP 67 (NEMA 6)
Indicator	Green LED



Code Tube I.D.	A	B	Switch holder
16	16	29.5	HPL
25	15.5	35.5	
32	15.5	41.5	
40	10.5	46.5	
50	16.5	56	
63	15.5	68.5	

Hold plug



Code Tube I.D.	GL	GD
16	0.7	7.5
25	1.0	13
32	0.7	18
40	0.7	18
50	0.8	18

Note. The dimension of end cap which lock hold plug.

