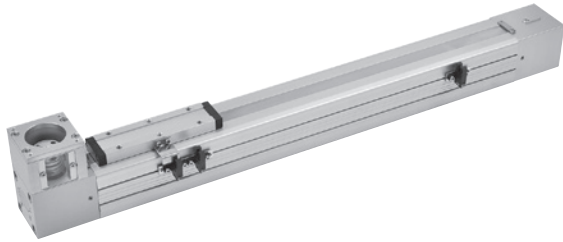


# METFB-40 series



## SLIDER ELECTRIC CYLINDER (WITHOUT MOTOR)



### Specification

Model	METFB-40	
Positioning repeatability (mm)	±0.05	
Lead (mm/rev)	72	
Belt pitch (mm)	3	
Stroke (mm)	100~2000/50 pitch	
No-load torque (N.m)	0.6	
Slot-type photomicro sensor	RLT (Please refer to page 5-16)	

Motor type	Servo / Step	Transmission	Timing belt
Environment	Standard	Guide type	Linear guide

Motor type	AC servo	Step
Power output / size	400W	□56
Max. speed *1 (mm/s)	2400	720
Work load *2,3	Horizontal (kg)	15
	Vertical (kg)	—

- \*1. Acceleration and deceleration value is set 0.5 second.
- \*2. The operating speed under work load is less than maximum speed.
- \*3. Not available for vertical condition.

### Order example of electric cylinder

**METFB-40 N-1000 BW-S56**

Model	Size	Stroke	Motor position	Motor brand	Flange face
METFB-40	N	1000	BW	M	40
			BM	P	56
				S	□56 Step (*1)
				B	

*(\*)2*

Guide installation	100~2000 mm 50 mm pitch
N Without guide	
GR Guide right side	
GL Guide left side	

Motor brand	40	56
M	Mitsubishi Yaskawa Delta	400W Servo
P	Panasonic	
S	Mindman	□56 Step (*1)
B		

\*1. Step motors are without brake.  
\*2. Standard type is without motor. Please refer to the list of standard motors for flange size.

### Slot-type photomicro sensor set

**RZ-EB2-N**

Sensor set

Sensor type

\* With RLT sensor, mounting seat, bolt and cable 2m.

Sensor type	Sensor type
N	NPN
P	PNP

### Accessory kits

**AK-EB2-40**

Accessory kits

Size

\* With interrupter and bolt.

### Weight

Unit: kg

Model	Basic weight METFB-40N	Stroke 100 mm METFB-40N	Basic weight (with guide) METFB-40G*	Stroke 100 mm (with guide) METFB-40G*
Size				
40	2.96	0.5	3.73	0.62

\* The form is the weight of the type of motor top side.

# METFB-40 Dimensions

## SLIDER ELECTRIC CYLINDER (WITHOUT MOTOR)



Rotary Actuator

Clamp Cylinder

Gripper

Electric Actuator

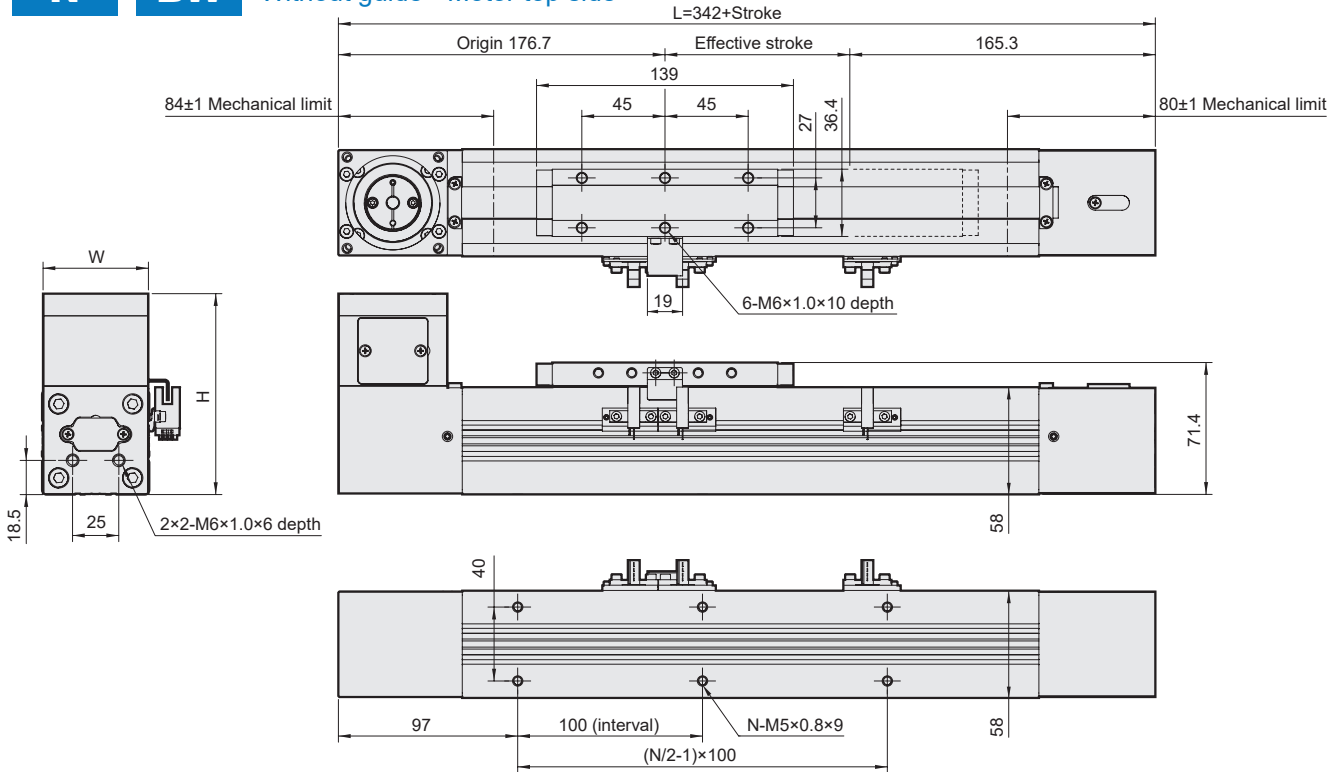
Auxiliary Equipment

Hydraulic Cylinder

**N**

**BW**

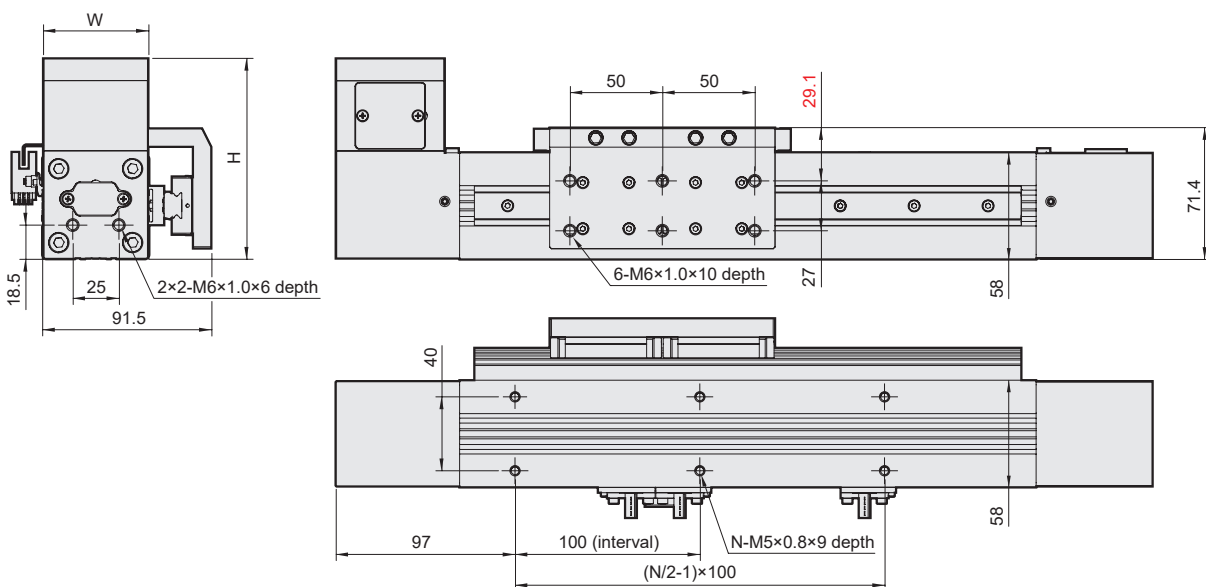
Without guide • Motor top side



**GL**

**BW**

Guide left side • Motor top side



Unit: mm

Stroke Code	100	200	300	400	500	600	700	800	900	1000	1100	1200	1300	1400	1500	1600	1700	1800	1900	2000
<b>L</b>	442	542	642	742	842	942	1042	1142	1242	1342	1442	1542	1642	1742	1842	1942	2042	2142	2242	2342
<b>N</b>	6	8	10	12	14	16	18	20	22	24	26	28	30	32	34	36	38	40	42	44

Stroke Code	Servo	Step
<b>W</b>	57	57
<b>H</b>	108.7	102.7

# METFB-40 Dimensions

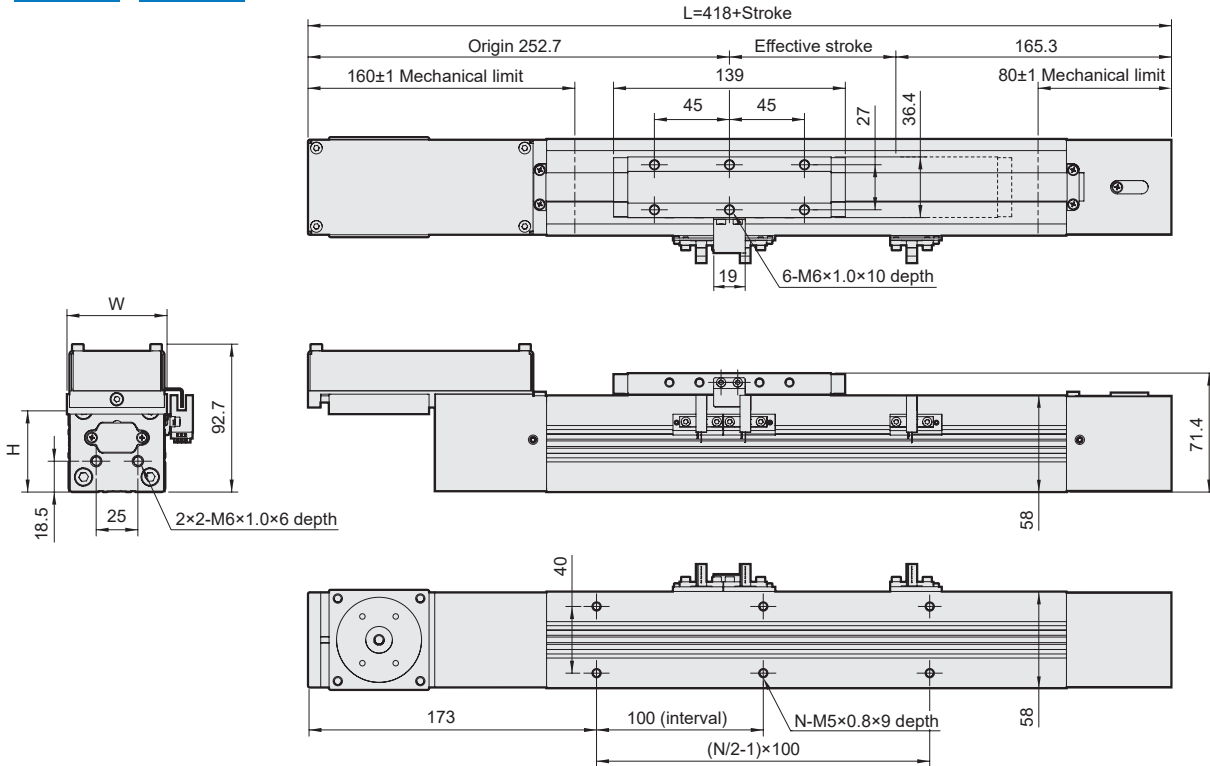
## SLIDER ELECTRIC CYLINDER (WITHOUT MOTOR)



**N**

**BM**

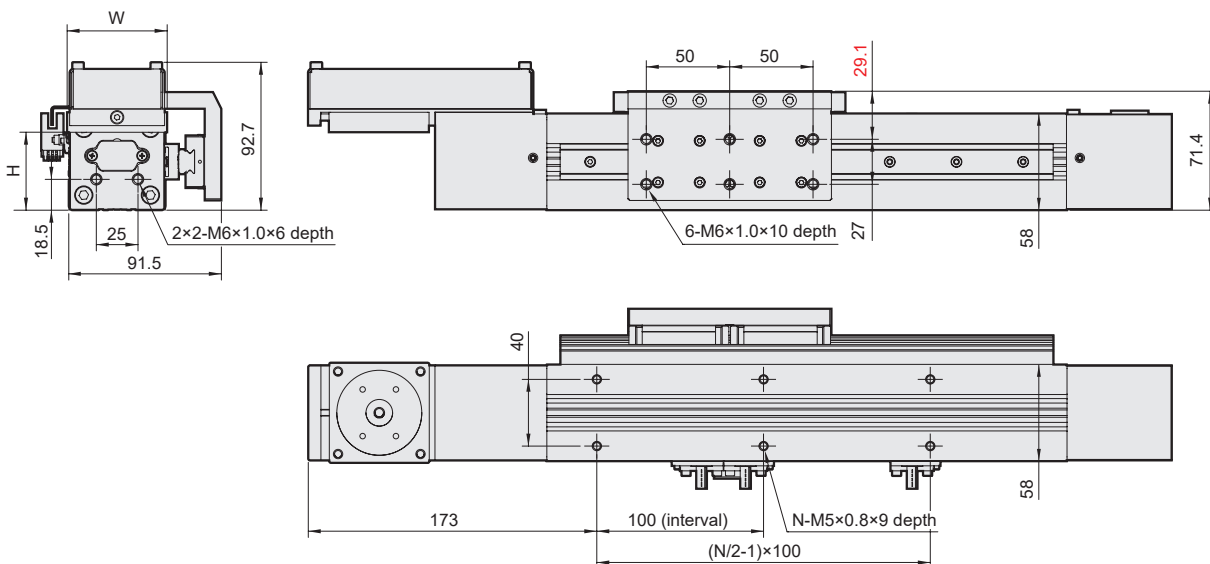
Without guide • Motor down side



**GL**

**BM**

Guide left side • Motor down side



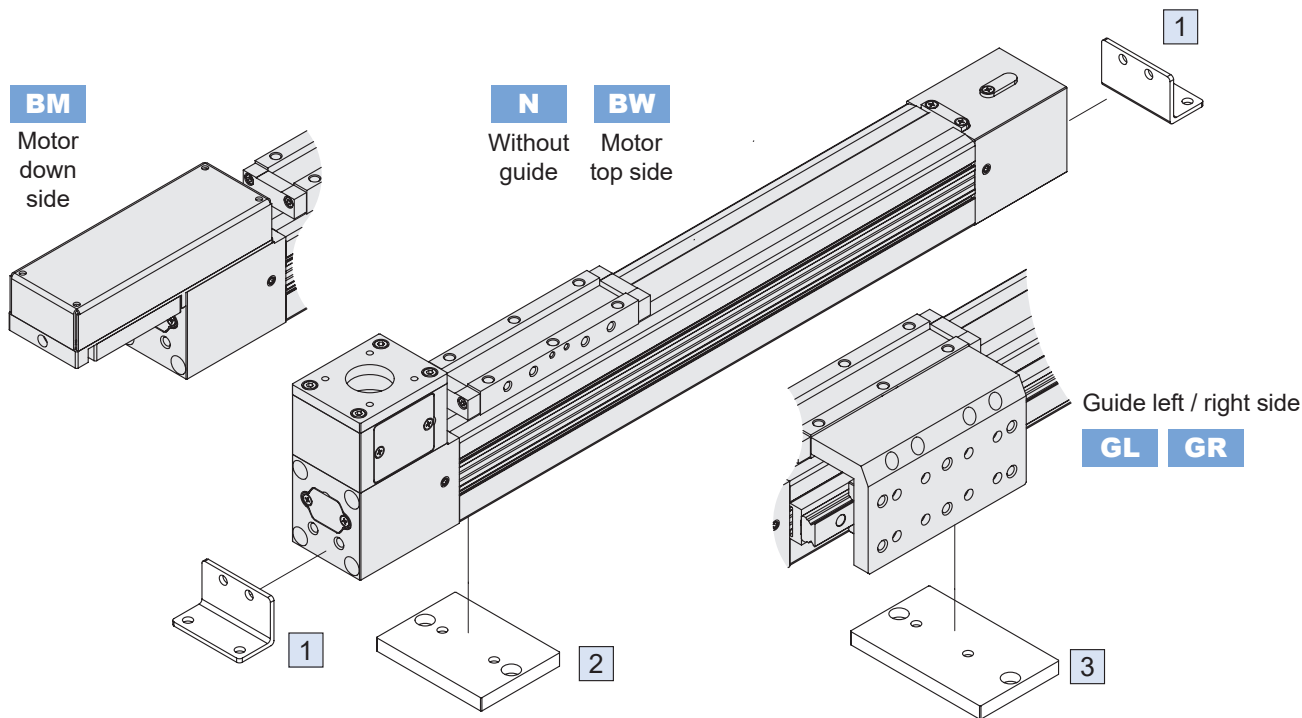
Unit: mm

Stroke Code	100	200	300	400	500	600	700	800	900	1000	1100	1200	1300	1400	1500	1600	1700	1800	1900	2000
<b>L</b>	518	618	718	818	918	1018	1118	1218	1318	1418	1518	1618	1718	1818	1918	2018	2118	2218	2318	2418
<b>N</b>	6	8	10	12	14	16	18	20	22	24	26	28	30	32	34	36	38	40	42	44

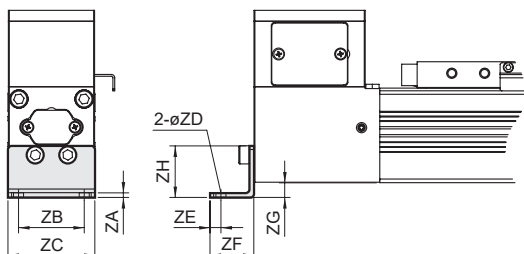
Stroke Code	Servo	Step
<b>W</b>	60	57
<b>H</b>	46.7	48.7

# METFB-40 Mounting accessories

## SLIDER ELECTRIC CYLINDER (WITHOUT MOTOR)

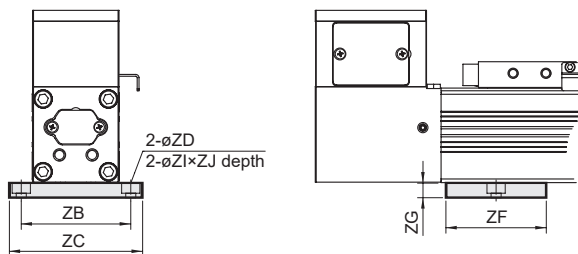


1 End cover bracket (2pcs/set)

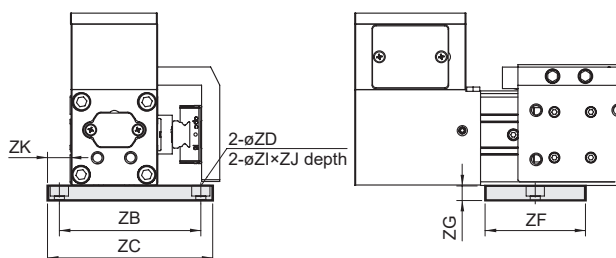


\* Not applicable for (BM) motor down side.

2 Mid section support \*Applicable for (N) without guide.



3 Mid section support \* Applicable for (GR / GL) with guide.



Unit: mm

Item	ZA	ZB	ZC	ZD	ZE	ZF	ZG	ZH	ZI	ZJ	ZK	Weight (g)	Order number
1	2.5	40	57	5.5	6	24	8	31.5	-	-	-	59	LB-EB2-40
2	-	70	85	5.5	-	60	8	-	10	5.5	-	105	MS-EB2-40
3	-	88	103	5.5	-	60	8	-	10	5.5	13.5	128	MS-EB2-40G