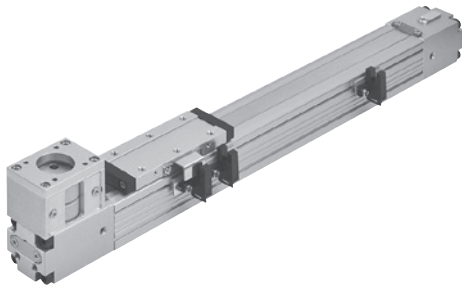


METFB-25 series

SLIDER ELECTRIC CYLINDER (WITHOUT MOTOR)



Motor type	Servo / Step	Transmission	Timing belt
Environment	Standard	Guide type	Linear guide

Specification

Model		METFB-25
Positioning repeatability	(mm)	±0.05
Lead	(mm/rev)	50
Belt pitch	(mm)	2
Stroke	(mm)	100~1000/50 pitch
No-load torque	(N.m)	0.1
Slot-type photomicro sensor		RLT (Please refer to page 5-16)

Motor type	AC servo	Step
Power output / size	100W	□42
Max. speed *1	(mm/s)	1500
Work load *2,3	Horizontal (kg)	5
	Vertical (kg)	—

- *1. Acceleration and deceleration value is set 0.5 second.
- *2. The operating speed under work load is less than maximum speed.
- *3. Not available for vertical condition.

Order example of electric cylinder

METFB-25 N - 1000 BW - S42

Model	Size	Stroke	Motor position	Motor brand	Flange face						
Guide installation N Without guide GR Guide right side GL Guide left side	100~1000 mm 50 mm pitch	BW Top side BM Down side	M Mitsubishi Y Yaskawa D Delta P Panasonic S Mindman	10 100W Servo	42 □42 Step (*1)						
						(*2) Standard type is without motor. Please refer to the list of standard motors for flange size.					

Slot-type photomicro sensor set

RZ - EB2 - N

Sensor set	Sensor type
* With RLT sensor, mounting seat, bolt and cable 2m.	N NPN
	P PNP

Accessory kits

AK - EB2 - 25

Accessory kits	Size
* With interrupter and bolt.	

Weight

Model	Basic weight METFB-25N	Stroke 100 mm METFB-25N	Basic weight (with guide) METFB-25G*	Stroke 100 mm (with guide) METFB-25G*
Size				
25	0.97	0.18	1.3	0.27

* The form is the weight of the type of motor top side.

METFB-25 Dimensions

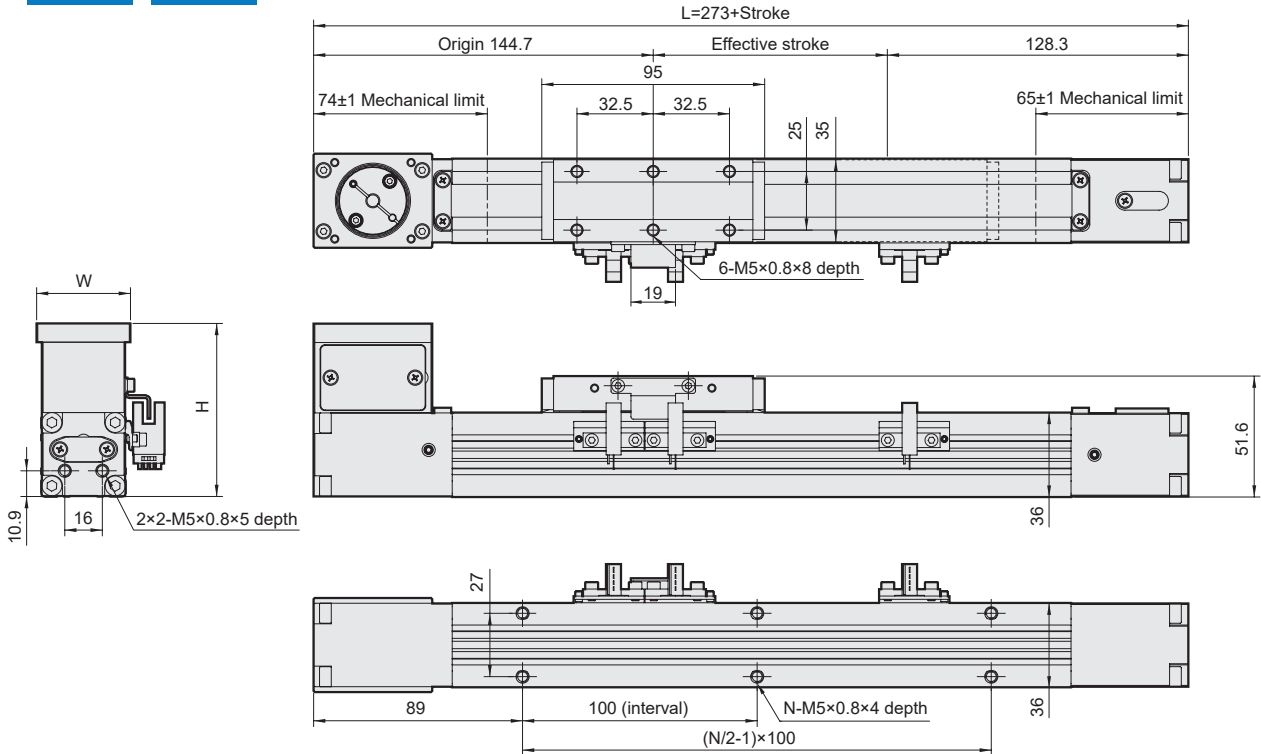
SLIDER ELECTRIC CYLINDER (WITHOUT MOTOR)



N

BW

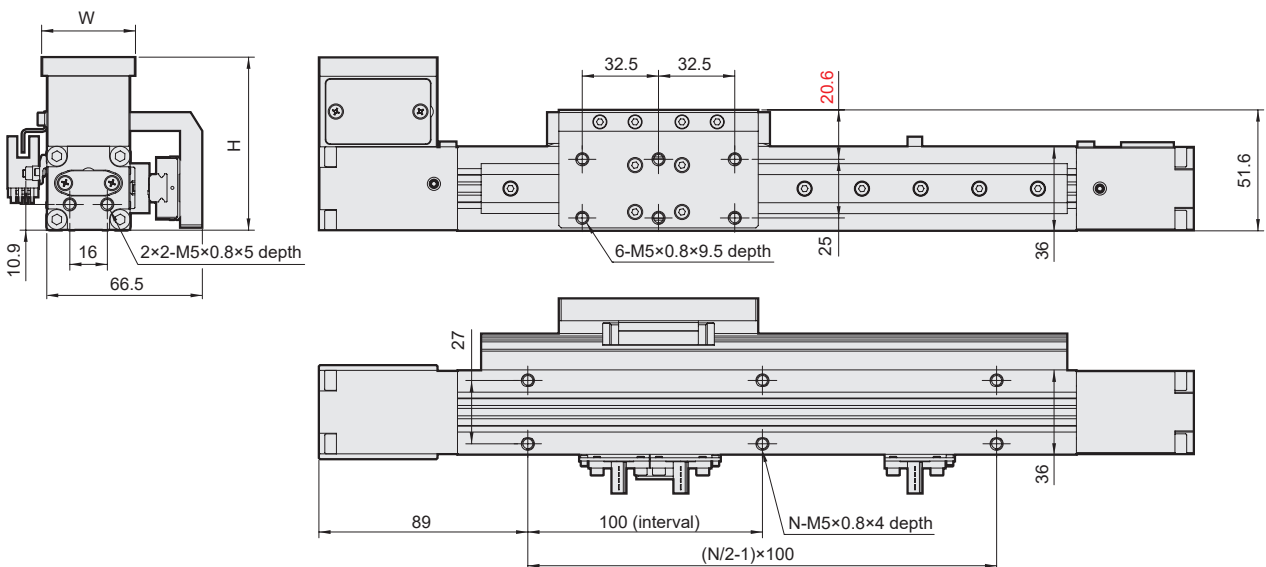
Without guide • Motor top side



GL

BW

Guide left side • Motor top side



Unit: mm

Stroke Code	100	150	200	250	300	350	400	450	500	550	600	650	700	750	800	850	900	950	1000
L	373	423	473	523	573	623	673	723	773	823	873	923	973	1023	1073	1123	1173	1223	1273
N	6	6	8	8	10	10	12	12	14	14	16	16	18	18	20	20	22	22	24

Stroke Code	Servo	Step
W	40	42
H	73.8	71.8

METFB-25 Dimensions

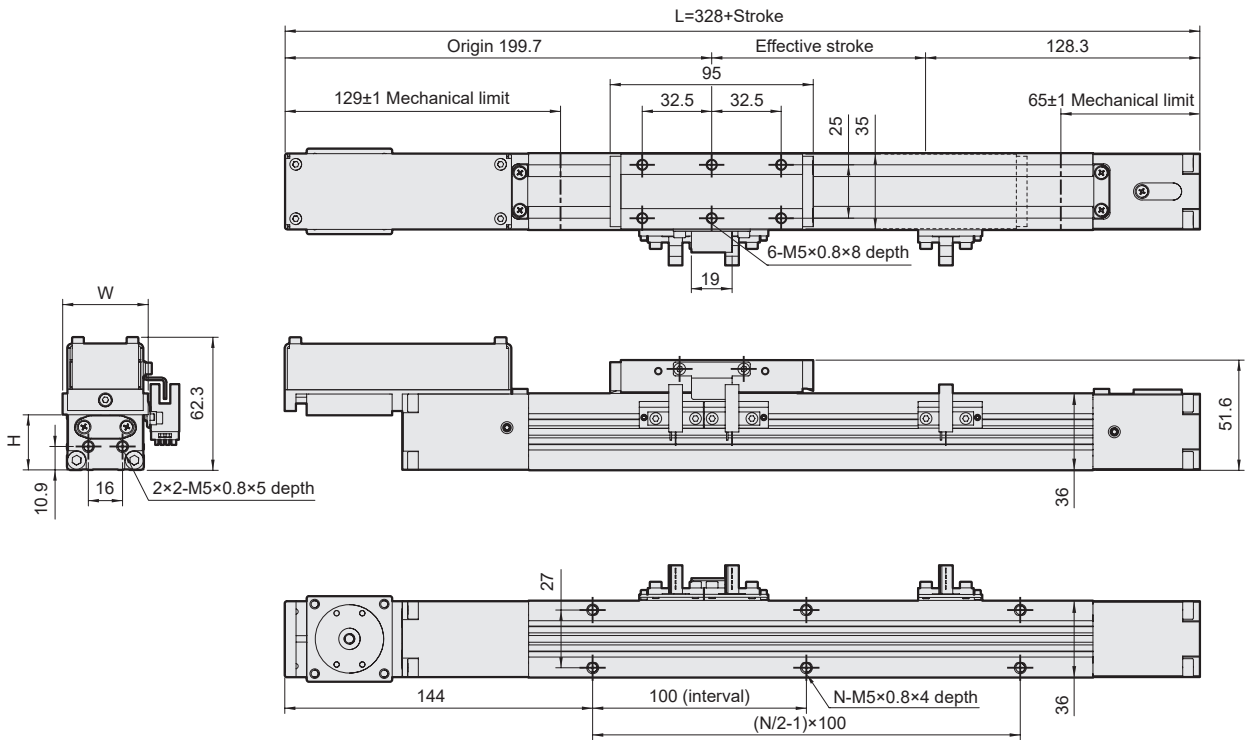
SLIDER ELECTRIC CYLINDER (WITHOUT MOTOR)



N

BM

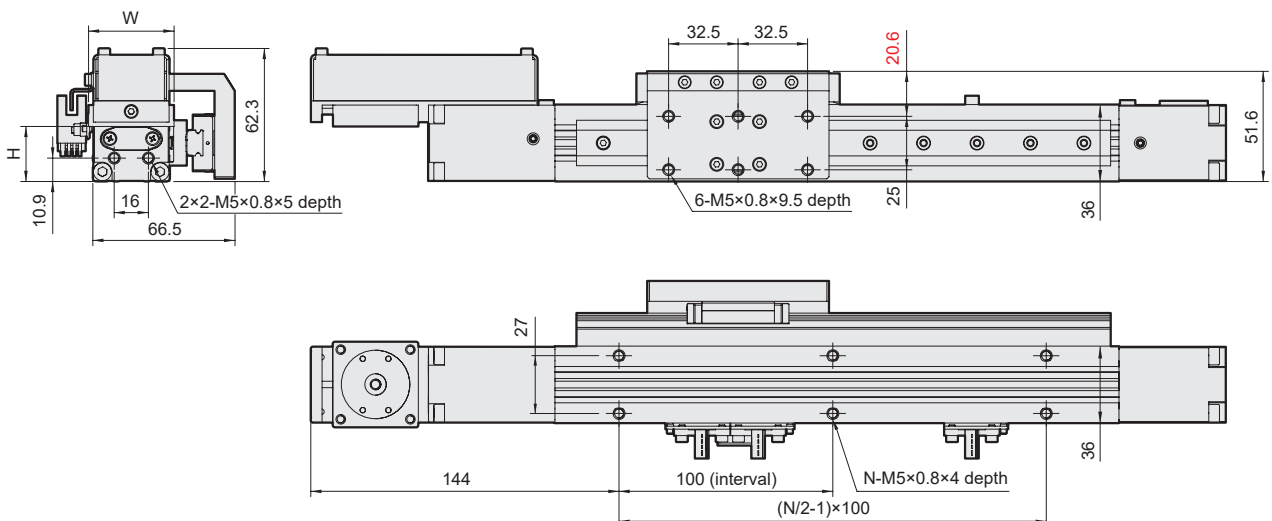
Without guide • Motor down side



GL

BM

Guide left side • Motor down side



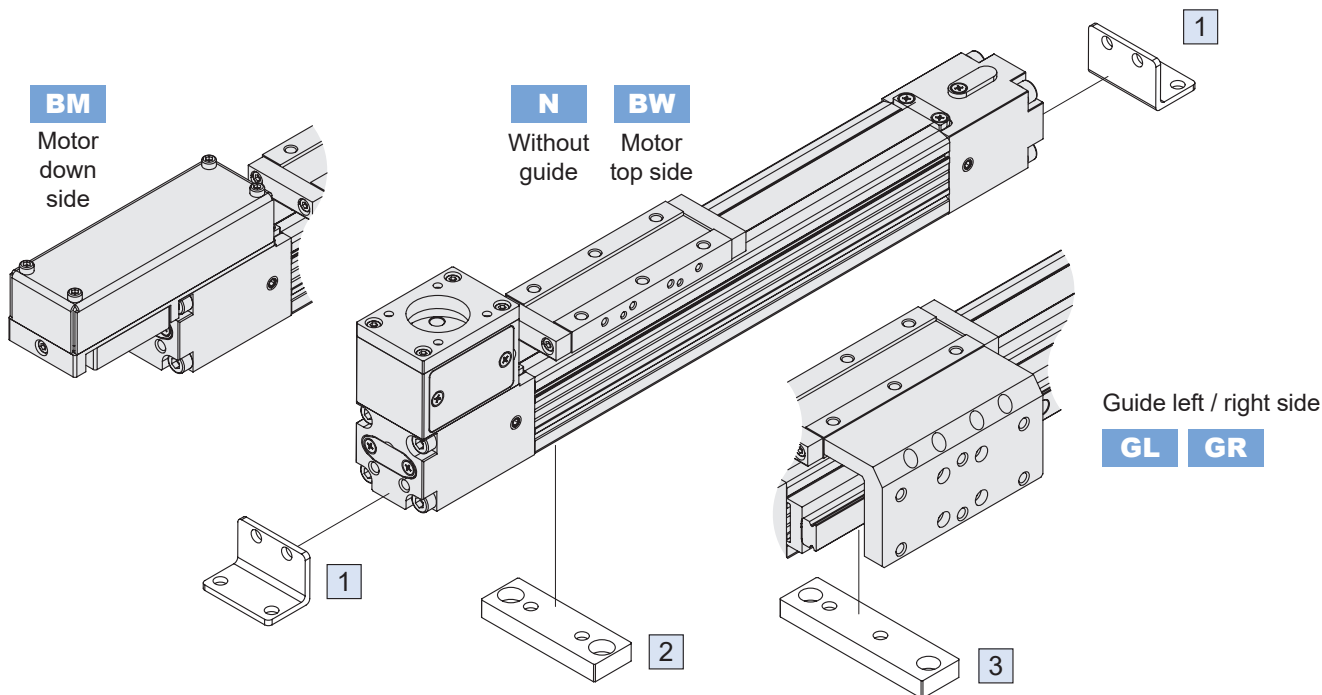
Unit: mm

Stroke Code	100	150	200	250	300	350	400	450	500	550	600	650	700	750	800	850	900	950	1000
L	428	478	528	578	628	678	728	778	828	878	928	978	1028	1078	1128	1178	1228	1278	1328
N	6	6	8	8	10	10	12	12	14	14	16	16	18	18	20	20	22	22	24

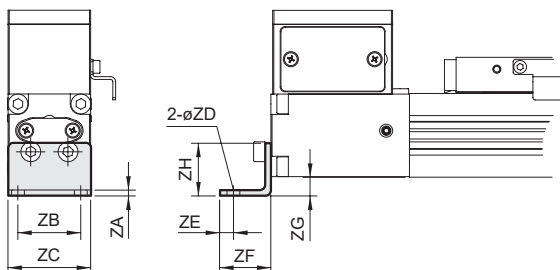
Stroke Code	Servo	Step
W	40	42
H	25.8	25.8

METFB-25 Mounting accessories

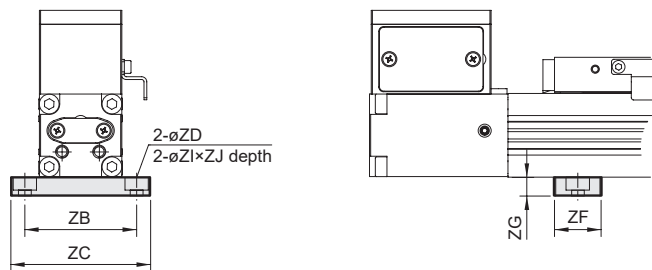
SLIDER ELECTRIC CYLINDER (WITHOUT MOTOR)



1 End cover bracket (2pcs/set)

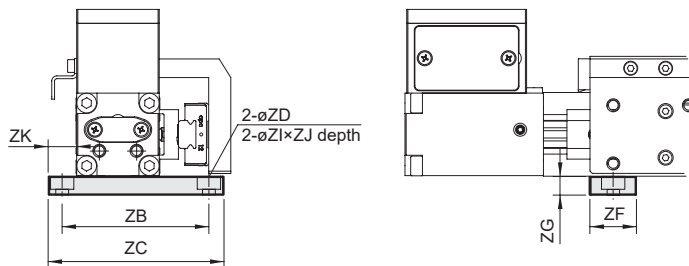


2 Mid section support *Applicable for (N) without guide.



* Not applicable for (BM) motor down side.

3 Mid section support * Applicable for (GR / GL) with guide.



Unit: mm

Item	ZA	ZB	ZC	ZD	ZE	ZF	ZG	ZH	ZI	ZJ	ZK	Weight (g)	Order number
1	2.5	27	35.5	5.5	6	22	8	22.6	-	-	-	27	LB-EB2-25
2	-	48	60	5.5	-	20	8	-	10	5.5	-	21	MS-EB2-25
3	-	63	75	5.5	-	20	8	-	10	5.5	12	27	MS-EB2-25G