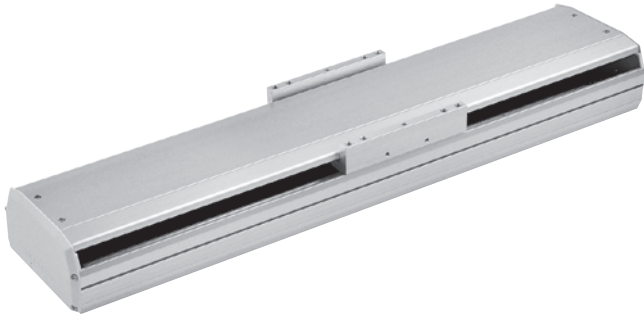


METS2-17 series

SLIDER ELECTRIC CYLINDER (WITHOUT MOTOR)



Environment	Standard	Servo motor	400W / 750W
Actuation type	Ball screw	Guide type	Linear guide

Specification

Model	METS2-17		
Positioning repeatability (mm)	±0.01		
Lead (mm)	5	10	20
Max. speed (mm/s)	250	500	1000
Stroke (mm)	100~1200 / 50 pitch		
Ball screw O.D. (mm)	C7 ø20		
Slot-type photomicro sensor	RLT (Please refer to page 5-16)		

AC servo motor	400W			
Coupling (mm)	10×14			
Max. payload	Horizontal (kg)	120	110	75
	Vertical (kg)	40	30	14
Rated thrust (N)	1388	694	347	

AC servo motor	750W			
Coupling (mm)	10×19			
Max. payload	Horizontal (kg)	120	120	83
	Vertical (kg)	50	40	25
Rated thrust (N)	2563	1281	640	

*1. When the stroke is over 750mm, the run-out of the ballscrew will occur. We recommend to low down the working speed under this circumstance.
 *2. Acceleration and deceleration value are set to 0.2 second.

Order example

METS2-17 - L05 - 100 - BC - M40 B

Model	Size	Stroke	Motor position	Motor brand	Flange face	Brakes
METS2-17	Ball screw lead L05: 5 mm L10: 10 mm L20: 20 mm	100~1200 mm 50 mm pitch	M: Built-in (*1) BC: Direct connection BM: Lower side BR: Right side BL: Left side	M: Mitsubishi Yaskawa Delta P: Panasonic	40 75 400W 750W	-: No brake B: With brake

*1. Not applicable for 750W servo.
 *2. Standard type is without motor. Please refer to the list of standard motors for flange size.
 *3. Only for motor position "Built-in".

Slot-type photomicro sensor set

RZ - ET1 - 14 - N

Sensor set	Size	Sensor type
RZ	ET1	14
		N: NPN P: PNP

* With RLT sensor, bolt, nut and cable 2m.
 * Use the same sensor set with METS2-14.

Accessory kits

AK - ET1 - 17

Accessory kits	Size
AK	ET1
	17

* With interrupter and bolt.