

February 29th, 2024

MCHC-10, 16, 20, 25

Profile change Notification

Thank you for supporting Mindman products. The design change will apply to the following models. Sorry for any inconvenience that may occur. Kindly understand and cooperate.

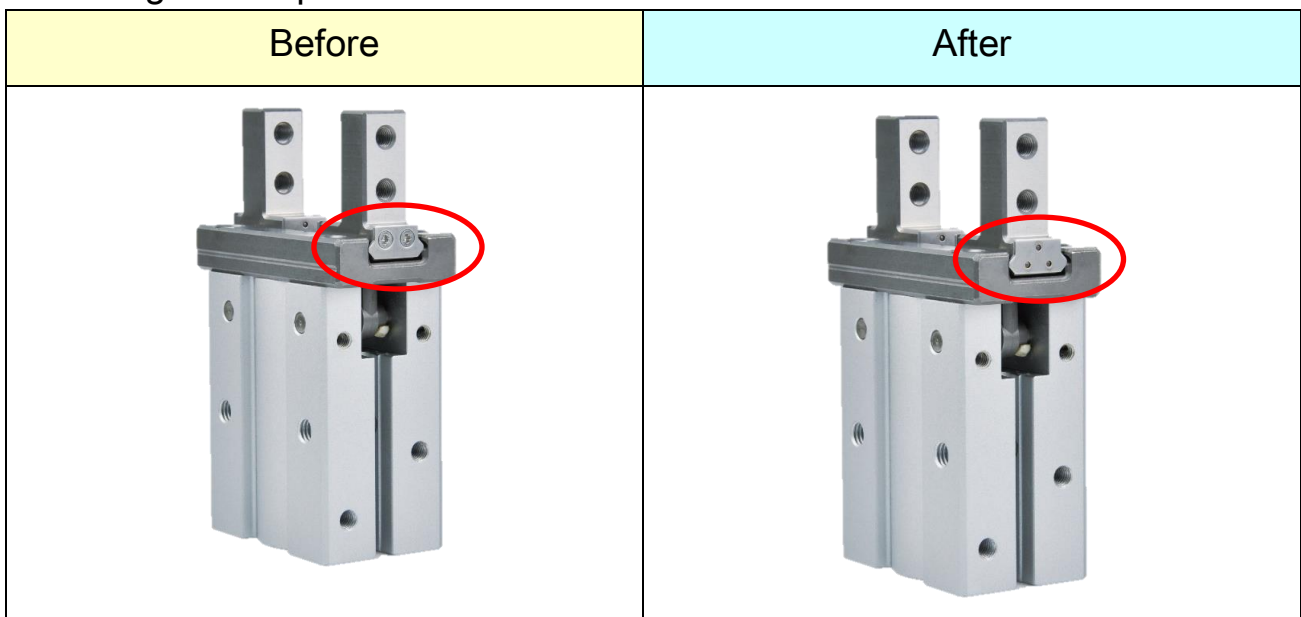
1. Model series

MCHC-10, 16, 20, 25

2. Design change reason

Profile changes due to manufacturing process optimization.

3. Change descriptions



4. Effective date

It will not affect usage and will be replaced sequentially.

5. If there are any questions, please contact our sales department.