

Feb. 15st, 2023

Air Cylinders/Electric Actuators **Order Code of Accessories/Pins Changing Notification**

Thank you for supporting Mindman products. The design change will apply to the following models. Sorry for any inconvenience may occur. Kindly understand and cooperate.

1. Model series

MCQA、MCQA-AH、MCQN、MCQV、MCQV2、MCQV3、MCQVS、MCQV2L、
MCQI2、MCQI3、MCKQI2、MCJQ、MCKJQ、MCJI、MCJU、MCMA、MCMB、
MCKMB、MCMBL、MCMi、MCMIS、MCKMI、MCMJ、MCMJP、MCCG、
MCCN、MCCH、MCGI、MCRPL、MCRPLF、MCRPLK、MCRPLS、MCRPM、
MCRA、MCRC、MCKA、MCKGA、MCKGB、MEQI

2. Reasons for the change

In order to optimize the shipping process, Mindman is going to integrate some specifications and renew the order code.

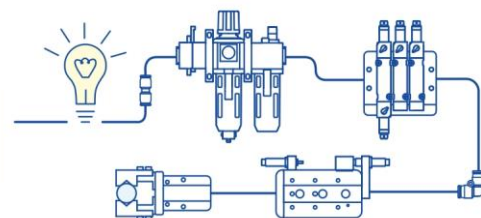
3. Change descriptions

See next page.

4. Effective date

Effective from 13th March 2023.

5. If there are any questions, please contact our sales department.



Change descriptions (For example: MCQA series)

Before


Mounting accessories

LB — MCQA — 40

MOUNTING TYPE

MODEL

TUBE I.D.



LB

Pin

PIN — MCQA — 40 — Y — P

PIN

TUBE I.D.

Mounting type

CB-P

Y-P

Description

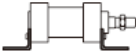
for CA & CB accessory

for Y & I connector

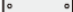
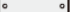
* P: With split pin

After

Mounting accessories

Code	LB (Purchase 2 pcs)
Mounting Tube I.D.	
ø40	LB-Q1-40
ø50	LB-Q1-50
ø63	LB-Q1-63
ø80	LB-Q1-80
ø100	LB-Q1-100
ø125	LB-Q1-125
ø150	LB-Q1-150
ø200	LB-Q1-200

Pin

Applicable	Y&I connector	CA&CB accessories
Code	PIN-Y-P (with split pin)	PIN-CB-P (with split pin)
Fig		
Tube I.D.		
ø40	PIN-Q1-50-1-P	PIN-Q1-40-1-P
ø50		PIN-Q1-50-1-P
ø63		PIN-Q1-63-1-P
ø80	PIN-Q1-80-2-P	PIN-Q1-80-1-P
ø100	PIN-Q1-80-1-P	PIN-Q1-100-1-P
ø125	PIN-Q1-125-2-P	PIN-Q1-125-1-P
ø150	PIN-Q1-125-1-P	PIN-Q1-150-1-P
ø200	PIN-Q1-200-1-P	PIN-Q1-200-1-P