Dec 14<sup>th</sup>, 2023

## MEQI-63 Series and Accessories LC

## Design Change Notification

Thank you for supporting Mindman products. The design change will apply to the following models. Sorry for any inconvenience may occur. Please kindly understand and cooperate.

- ## 1. Model series

## MEQI-63 Series

- ## 2. Design change reason

Design optimization. Unify all product lengths with different BC motor types. Unify LC accessory construction.

- ### 3. Change descriptions

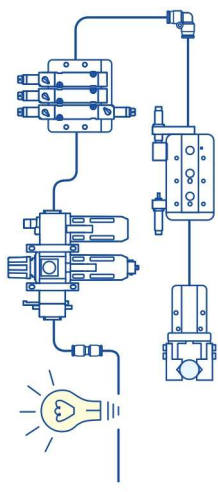
Before

**BC**  
馬達直結

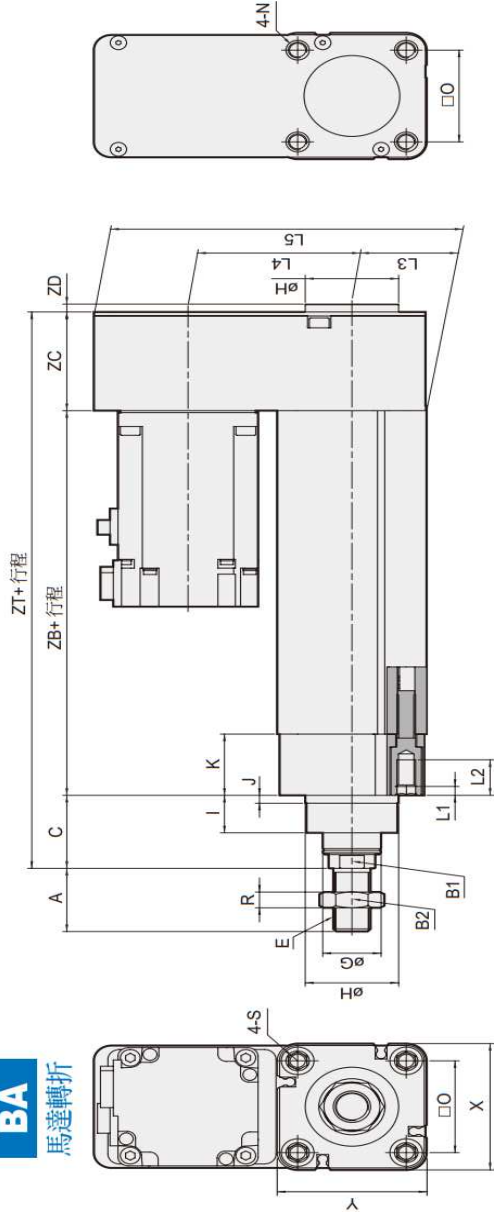
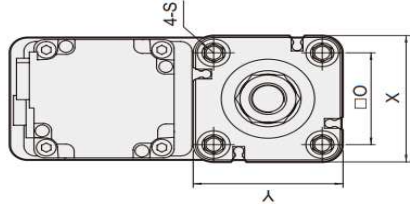
代號 規格	A	B1	B2	C	E	G	H	I	J	K	L1	L2	O	R	S	X	Y	ZB	ZC		ZT	
																			伺服	步進	伺服	步進
63	32	17	24	37	M16×1.5	30	45	19	4	35	4.5	18	56.5	8	M8×1.25	78	78	162	77	55	276	256

After

代號 規格	A	B1	B2	C	E	G	H	I	J	K	L1	L2	O	R	S	X	Y	ZB	ZC	ZT
63	32	17	24	37	M16×1.5	30	45	19	4	35	4.5	18	56.5	8	M8×1.25	77	77	162	64.0	263.0

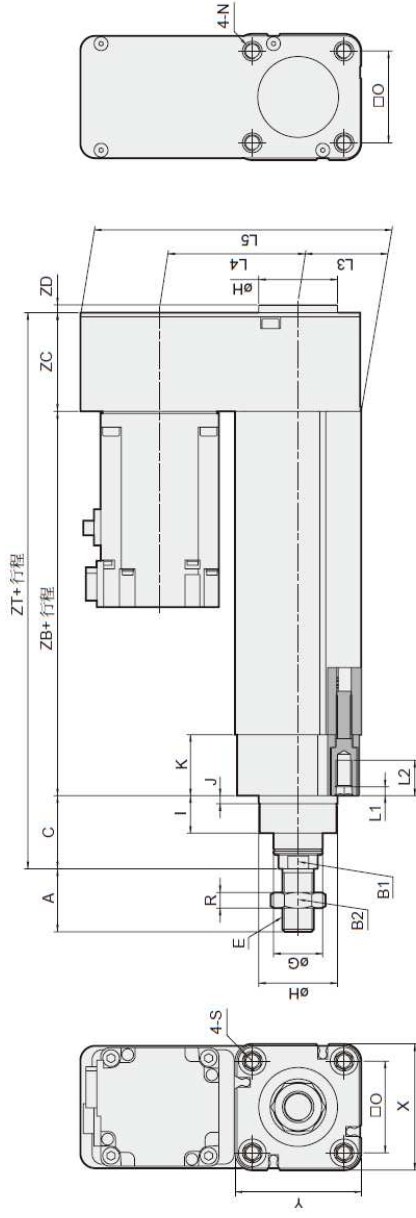
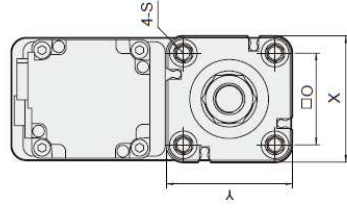


**BA**  
馬達轉折



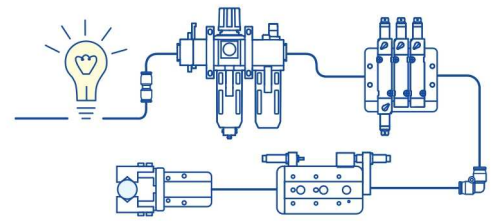
代號 規格	A	B1	B2	C	E	G	H	I	J	K	L1	L2	L3	L4	L5	N	O	R	S	X	Y	ZB	ZC	ZD	ZT
63	32	17	24	37	M16x1.5	30	45	19	4	35	4.5	18	39	70	150.5	M8x1.25x12L	56.5	8	M8x1.25	78	78	162	50	-	249

Before



代號 規格	A	B1	B2	C	E	G	H	I	J	K	L1	L2	L3	L4	L5	N	O	R	S	X	Y	ZB	ZC	ZD	ZT
63	32	17	24	37	M16x1.5	30	45	19	4	35	4.5	18	39	70	150.5	M8x1.25x12L	56.5	8	M8x1.25	78	78	162	50	4	249

After



Before

Technical drawing of the 'Before' product. The front view shows a square flange with four mounting holes, dimensions LX (total height), LH (height to center), LT (flange thickness), 4-øLB (hole diameter), LR (flange radius), and LS (flange width). The side view shows a long cylindrical body with dimensions A (total length), E (thread length), LM (mounting bracket length), LL (mounting bracket width), ZT+行程 (total length including stroke), and LY+行程 (length to end of stroke).

代號 規格	A	E	LB	LH	LL	LM	LR	LS	LT	LX	LY	ZT
63	32	M16×1.5	9	50	32	10	100	120	5	89	226	231

After

**LC**

\* 僅適用 (BC) 馬達直結型

Technical drawing of the 'After' product (LC). The front view shows a square flange with four mounting holes, dimensions LX (total height), LH (height to center), LT (flange thickness), 4-øLB (hole diameter), LR (flange radius), LS (flange width), and 10 (hole spacing).

Technical drawing of the 'After' product (LC). The side view shows a long cylindrical body with dimensions A (total length), E (thread length), LM (mounting bracket length), LL (mounting bracket width), ZT+行程 (total length including stroke), and LY+行程 (length to end of stroke).

代號 規格	A	E	LB	LH	LR	LS	LT	LX	LY	ZT
63	32	M16×1.5	9	50	92	110	12.5	88.5	176.5	231

4. Effective date

- It will not affect the usage of finished product, and will replace sequentially.
- Accessories **LC** will be replaced with new construction from now on.

5. If there is any questions, please contact our sales department.