

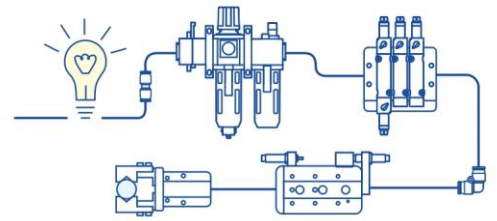
Apr. 2th, 2024

MACP302/401/403、MAFR302/401/403 Series

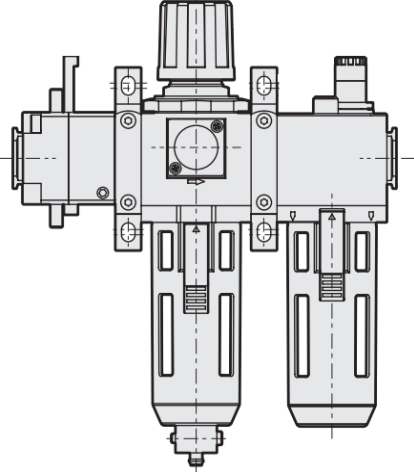
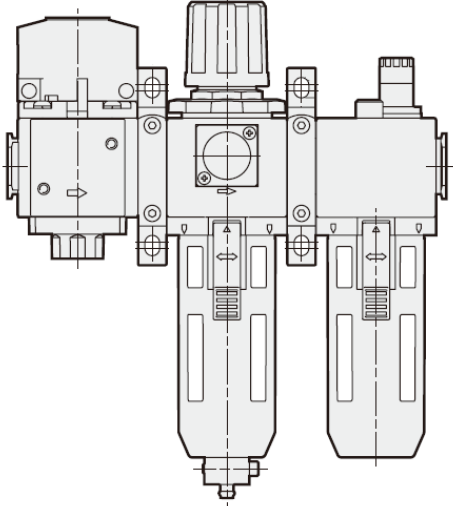
Notification for adding the stop valve models (-HR/1*/2*/4*)

Thank you for supporting Mindman products. The design change will apply to the following models. Sorry for any inconvenience may occur. Please kindly understand and cooperate.

1. Model series
MACP302/401/403、MAFR302/401/403
2. Design change reason
In response to the market, the air unit has been added with MVHR stop valve specifications (-HR/1*/2*/4*).
3. Change descriptions
See next page.
4. Effective date
Effective immediately.
5. If you have any question, please contact our sales representative.



Take MACP302 series for example.

Before	After
Appearance	
	
Specification	
<p>Order example MACP302 - 8A - NC□□ - E1 - □ - HT - □</p> <ul style="list-style-type: none"> MODEL PORT SIZE 8A: 1/4 10A: 3/8 15A: 1/2 (Option) PRESSURE SWITCH E1: MP41P-022 E2: MP41P-022-QD E5: MP41P-042 E6: MP41P-042-QD * Refer to page 5-13 for MP41. FILTER ELEMENT Blank: 5µm 40u: 40µm SHUTOFF VALVE HT: MVHT-302-3H PORT THREAD Blank: Rc thread G: G thread NPT: NPT thread <p style="text-align: center;">- HT</p> <p style="text-align: center;">SHUTOFF VALVE HT: MVHT-302-3H</p>	<p>Order example MACP302 - 8A - NC□□ - E1 - □ - HR - □</p> <ul style="list-style-type: none"> MODEL PORT SIZE 8A: 1/4 10A: 3/8 15A: 1/2 (Option) PRESSURE SWITCH E1: MP41P-022 E2: MP41P-022-QD E5: MP41P-042 E6: MP41P-042-QD * Refer to page 5-13 for MP41. FILTER ELEMENT Blank: 5µm 40u: 40µm SHUTOFF VALVE HR: MVHR-302-3H 1: MVHR-302S-3H-AC110 1L: MVHR-302S-3H-AC110-L 1E: MVHR-302S-3H-AC110-E 2: MVHR-302S-3H-AC220 2L: MVHR-302S-3H-AC220-L 2E: MVHR-302S-3H-AC220-E 4: MVHR-302S-3H-DC24 4L: MVHR-302S-3H-DC24-L 4E: MVHR-302S-3H-DC24-E * Refer to page 3-71 for MVHR. PORT THREAD Blank: Rc thread G: G thread NPT: NPT thread <p style="text-align: center;">- HR</p> <p style="text-align: center;">SHUTOFF VALVE HR: MVHR-302-3H 1: MVHR-302S-3H-AC110 1L: MVHR-302S-3H-AC110-L 1E: MVHR-302S-3H-AC110-E 2: MVHR-302S-3H-AC220 2L: MVHR-302S-3H-AC220-L 2E: MVHR-302S-3H-AC220-E 4: MVHR-302S-3H-DC24 4L: MVHR-302S-3H-DC24-L 4E: MVHR-302S-3H-DC24-E * Refer to page 3-71 for MVHR.</p>