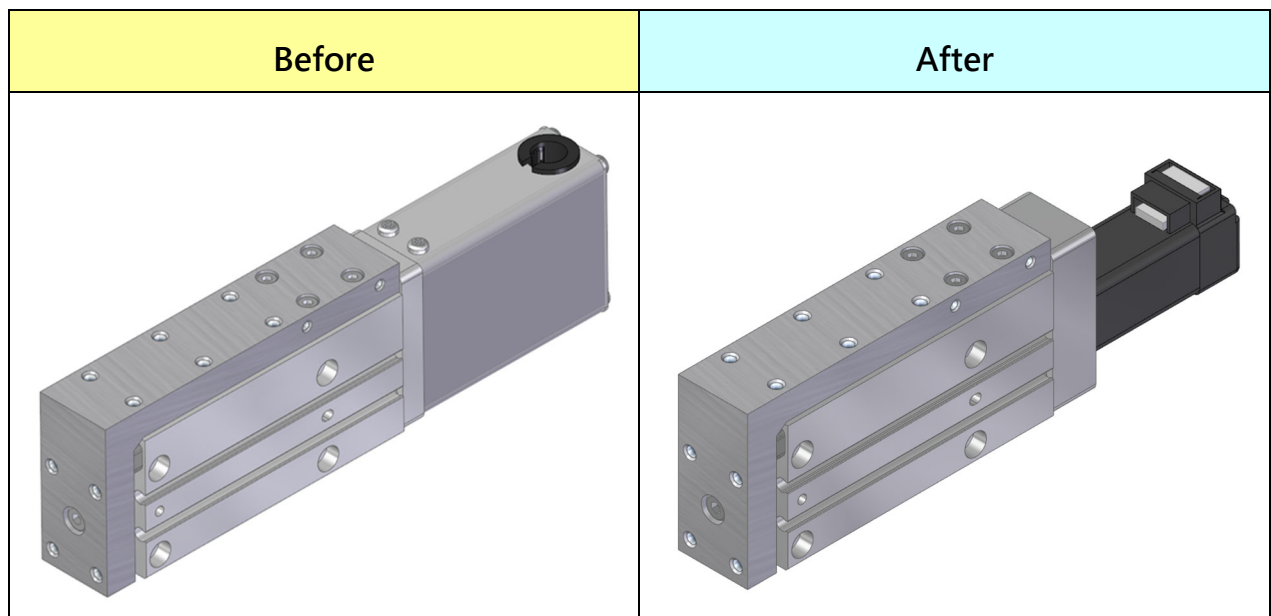


Jan. 5th, 2026

MESH2 Cancel Motor Cover Change Notification

Thank you for supporting Mindman products. The design change will apply to the following models. Sorry for any inconvenience may occur. Please kindly understand and cooperate.

1. Model series
MESH2 Series.
2. Design change reason
Cancel the motor cover.
3. Change descriptions



4. Effective date

It will not affect performance or usability, and will be replaced sequentially.

5. If there is any question, please contact our sales department.