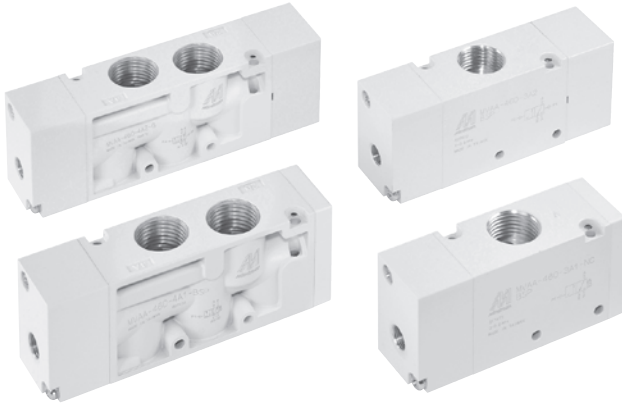


# MVAA-460 系列

氣動閥



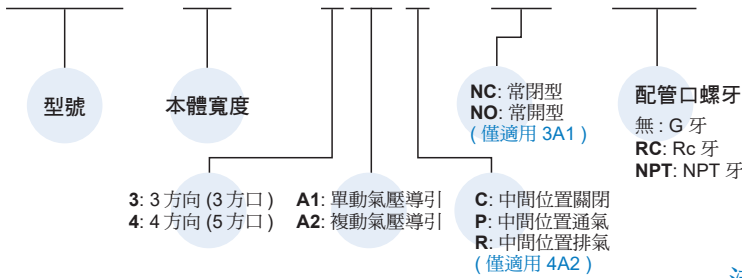
## 規格

型號	3A1	3A2	4A1	4A2	4A2C.PR
配管口徑代號	15A				
配管口徑尺寸	1/2				
方口數	3 口		5 口		
使用流體	空氣				
使用壓力範圍	0~0.8 MPa				
耐壓力	1 MPa				
有效斷面積	50 mm <sup>2</sup>				
導引壓力範圍	(0.34×P*+0.1)~0.8 MPa				
周圍溫度	-5~+60°C (不凍結)				
重量	300 g	326 g	275 g	338 g	410 g

\* P: 使用壓力

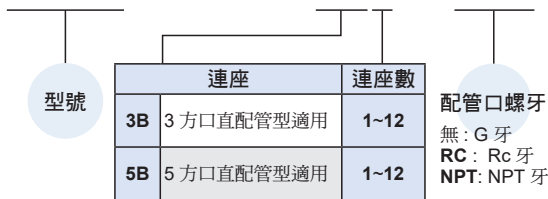
## 閥 / 訂購代號

MVAA - 460 - 4A2C - NC - NPT



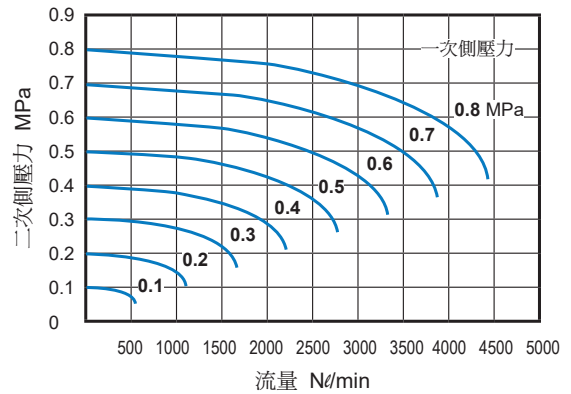
## 連座 / 訂購代號

MVSC - 460 - 5B3 - NPT



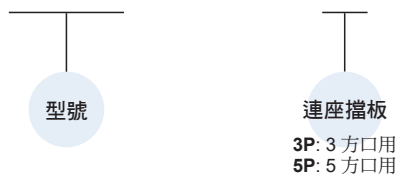
\* 與 MVSC 共用連座。  
\* 第 11 連座起，接單生產。

## 流量特性圖

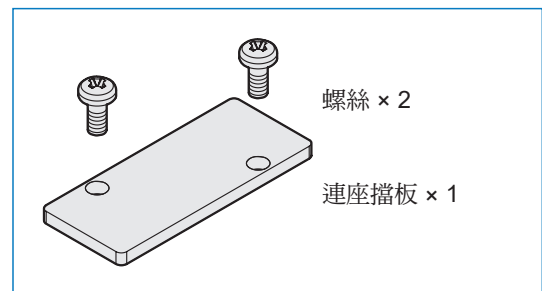


## 連座擋板 / 訂購代號 \* 與 MVSC 共用連座擋板

MVSC - 460 - 5P



## 連座擋板組件

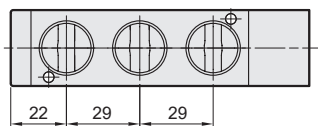
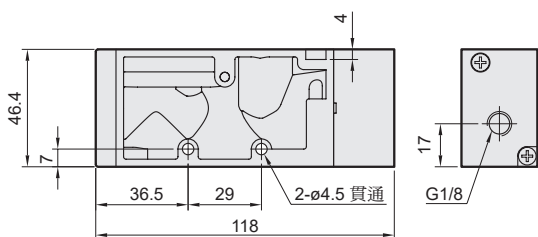
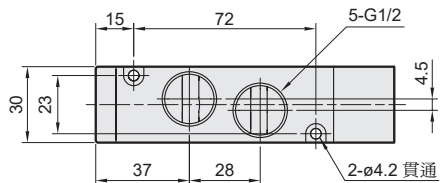
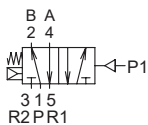


# MVAA-460 外觀尺寸

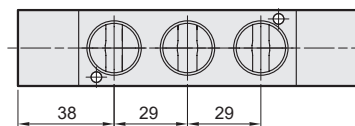
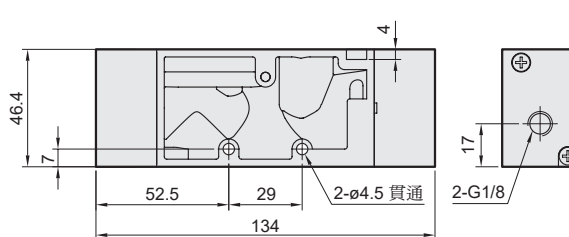
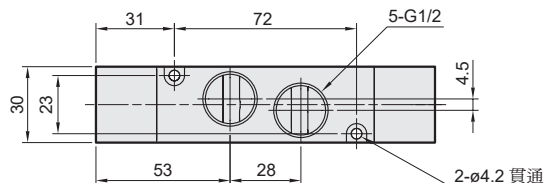
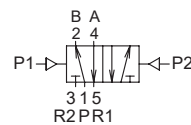
氣動閥



**MVAA-460-4A1**



**MVAA-460-4A2**

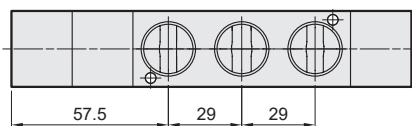
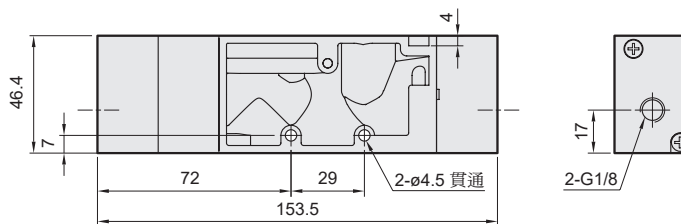
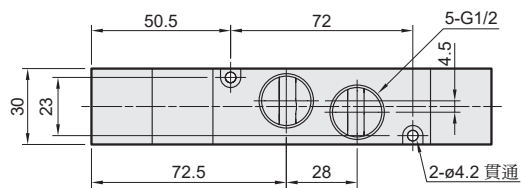
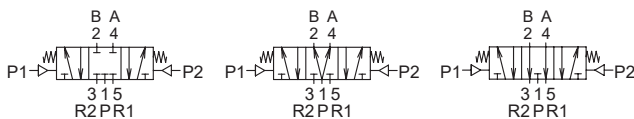


**MVAA-460-4A2C.PR**

**MVAA-460-4A2C**

**MVAA-460-4A2P**

**MVAA-460-4A2R**

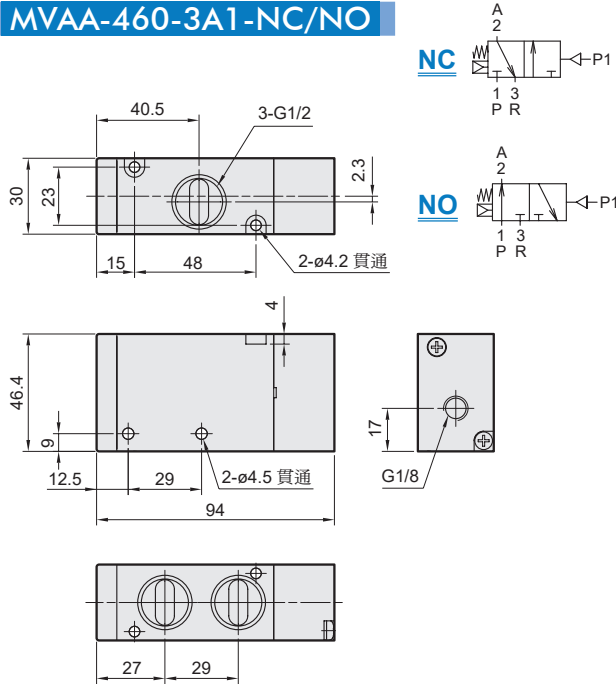


# MVAA-460 外觀尺寸

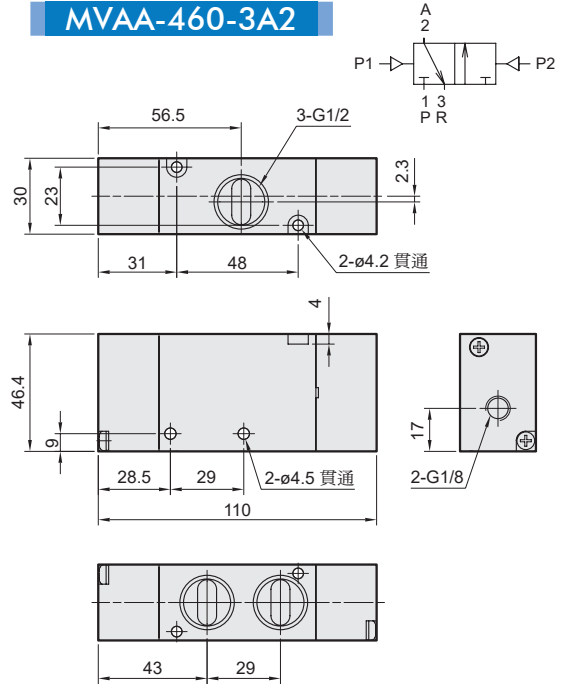
氣動閥



## MVAA-460-3A1-NC/NO



## MVAA-460-3A2

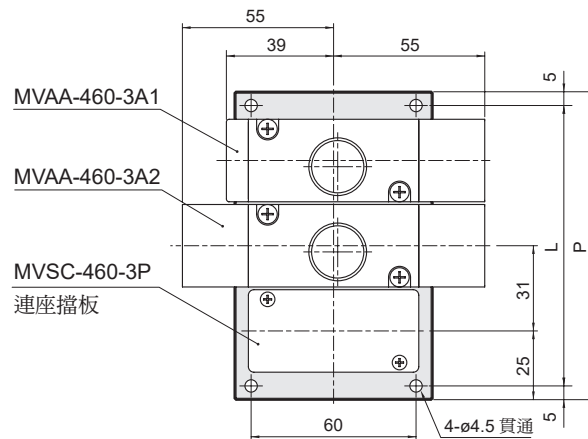


## 連座外觀尺寸

### MVSC-460-3B\*

\* 與 MVSC 共用連座

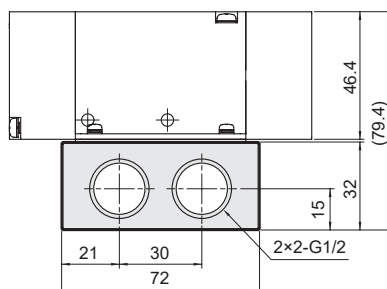
3 方口直配管型用



連座數	P	L
1	40	50
2	71	81
3	102	112
4	133	143
5	164	174
6	195	205
7	226	236
8	257	267
9	288	298
10	319	329

P: (連座數 -1)×31+40

L: (連座數 -1)×31+50



# MVAA-460 連座

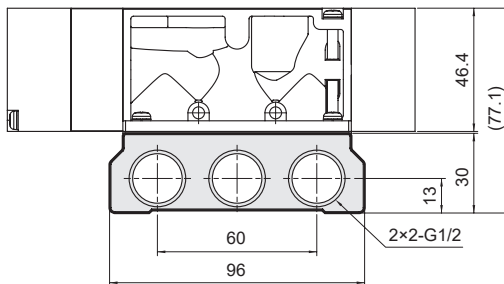
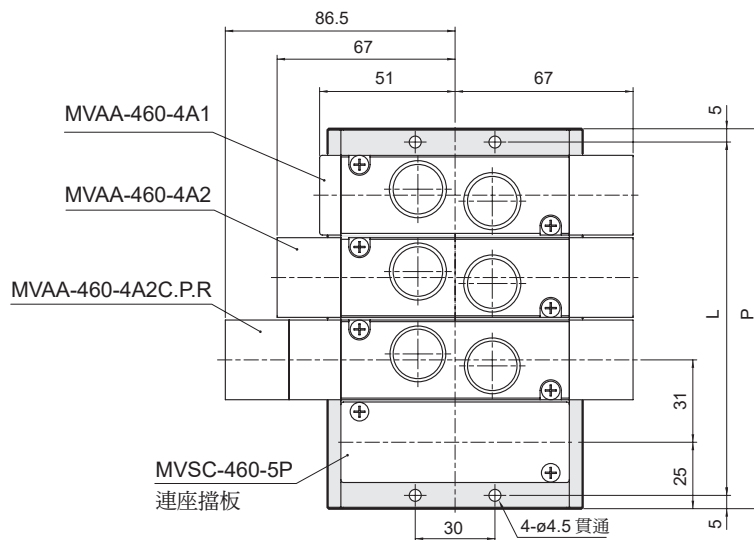
氣動閥



## MVSC-460-5B\*

\* 與 MVSC 共用連座

5 方口直配管型用



連座數	P	L
1	40	50
2	71	81
3	102	112
4	133	143
5	164	174
6	195	205
7	226	236
8	257	267
9	288	298
10	319	329

P: (連座數 - 1) × 31 + 40

L: (連座數 - 1) × 31 + 50