

MVSA-150 系列

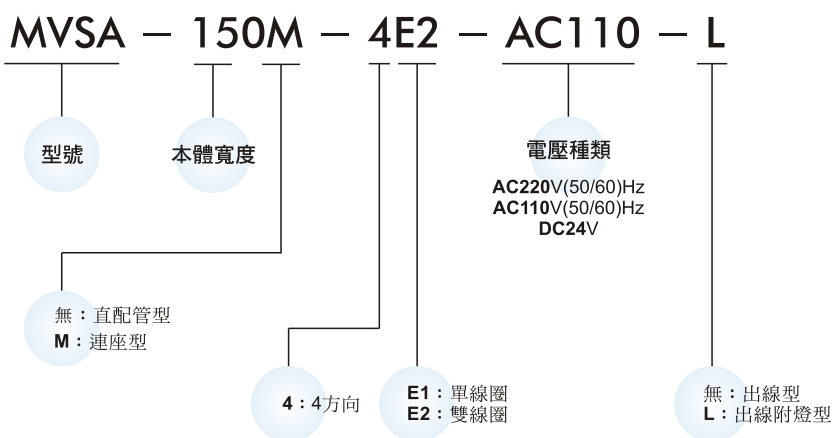
電磁閥



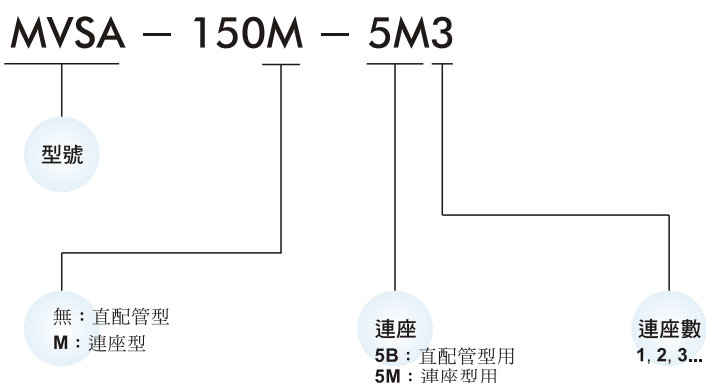
規格：

型號	4E1	4E2
配管口徑代號	M5	
配管口徑尺寸	M5×0.8	
方口數	5口	
位置數	2位置	
使用流體	空氣	
使用壓力範圍	0.15~0.8 MPa	
耐壓力	1 MPa	
有效斷面積	3.8 mm ²	
周圍溫度	-5~+50℃ (不凍結)	
應答時間	30 ms	
定格電壓	AC110V, 220V (50/60)Hz, DC24V	
電力消耗	AC=2.1/1.8VA DC=1.6W	
電壓容許範圍	±10%	
絕緣等級	B 級	
重量	76 g	115 g

閥 / 訂購代號：



連座 / 訂購代號：

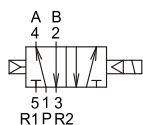


MVSA-150 外觀尺寸

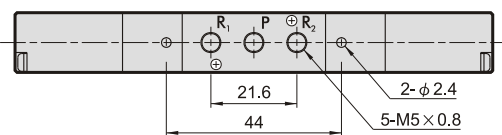
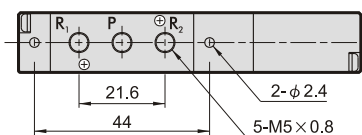
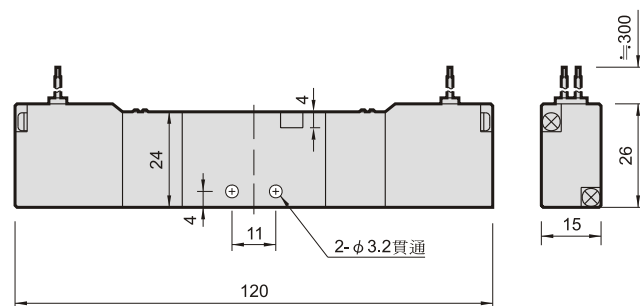
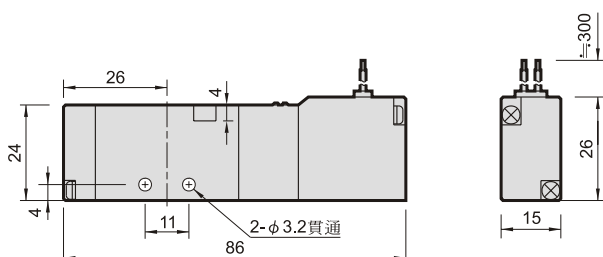
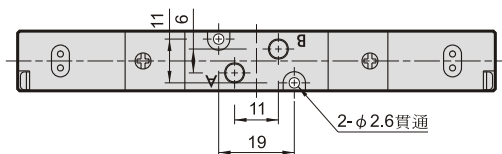
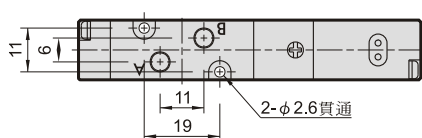
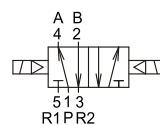
電磁閥



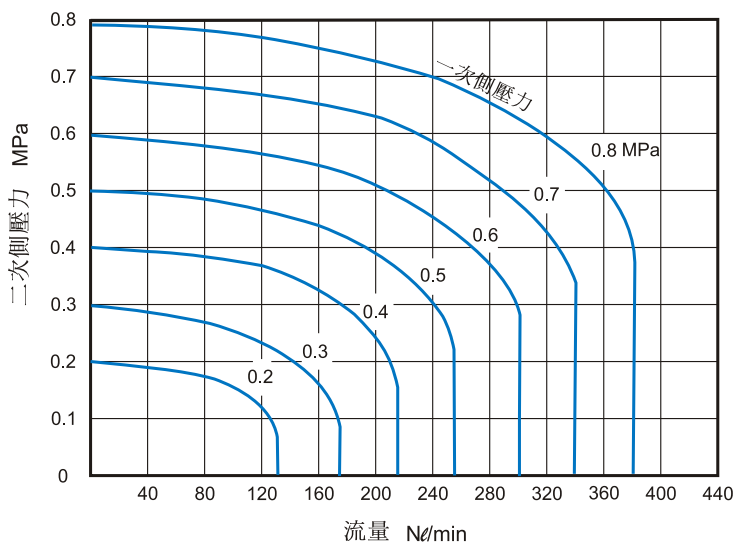
MVSA-150-4E1



MVSA-150-4E2



流量特性圖：



Mindman

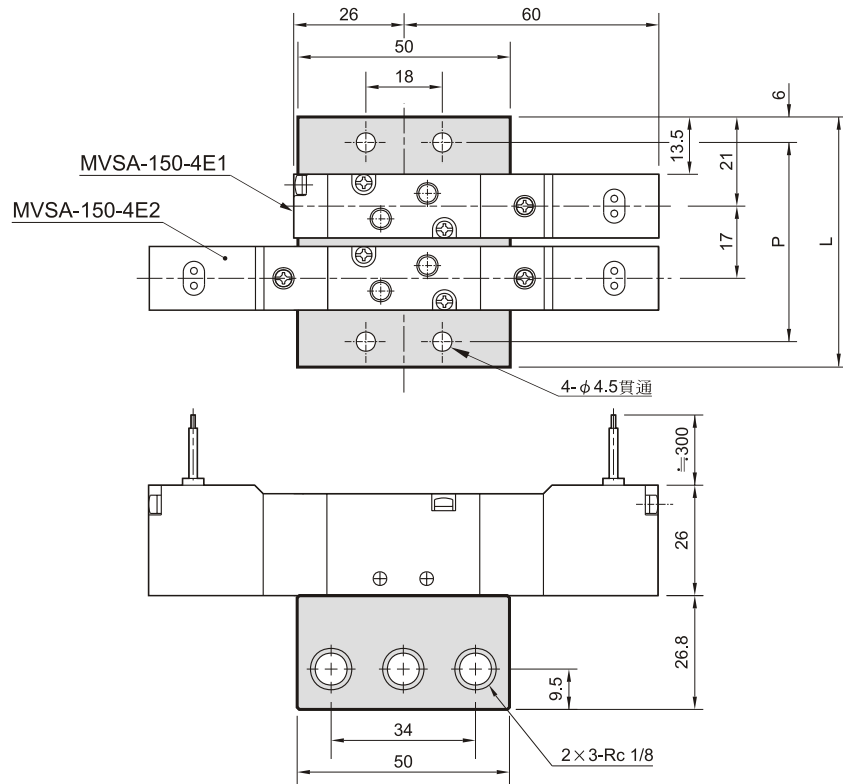
MVSA-150 連座

電磁閥

MVSA-150-5B*

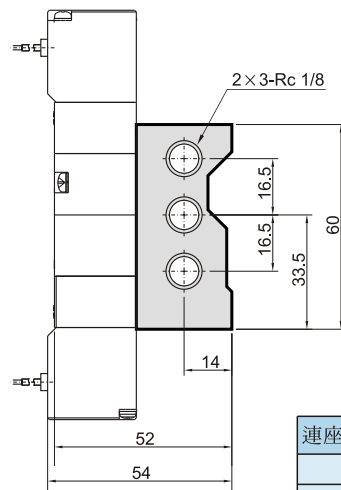
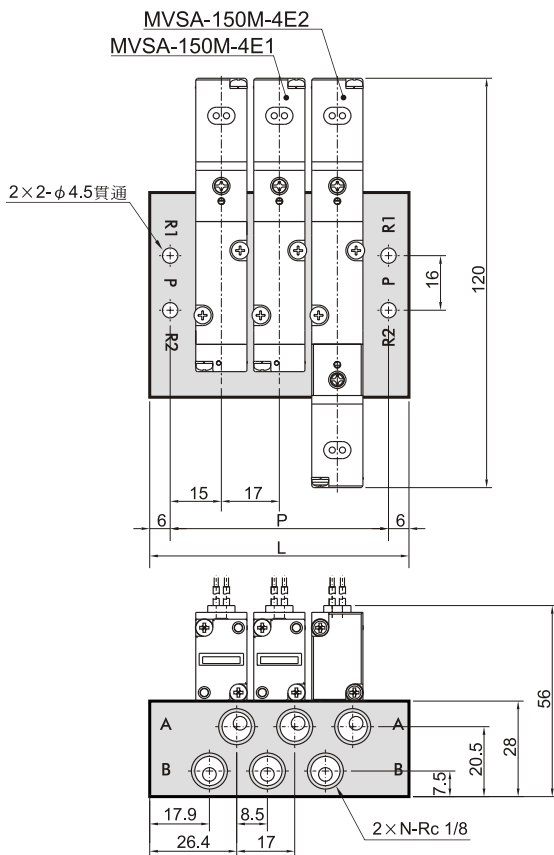
直配管型用

連座數	P	L
2	47	59
3	64	76
4	81	93
5	98	110
6	115	127
7	132	144
8	149	161
9	166	178
10	183	195



MVSA-150M-5M*

連座型用



連座數(N)	P	L
2	47	59
3	64	76
4	81	93
5	98	110
6	115	127
7	132	144
8	149	161
9	166	178
10	183	195