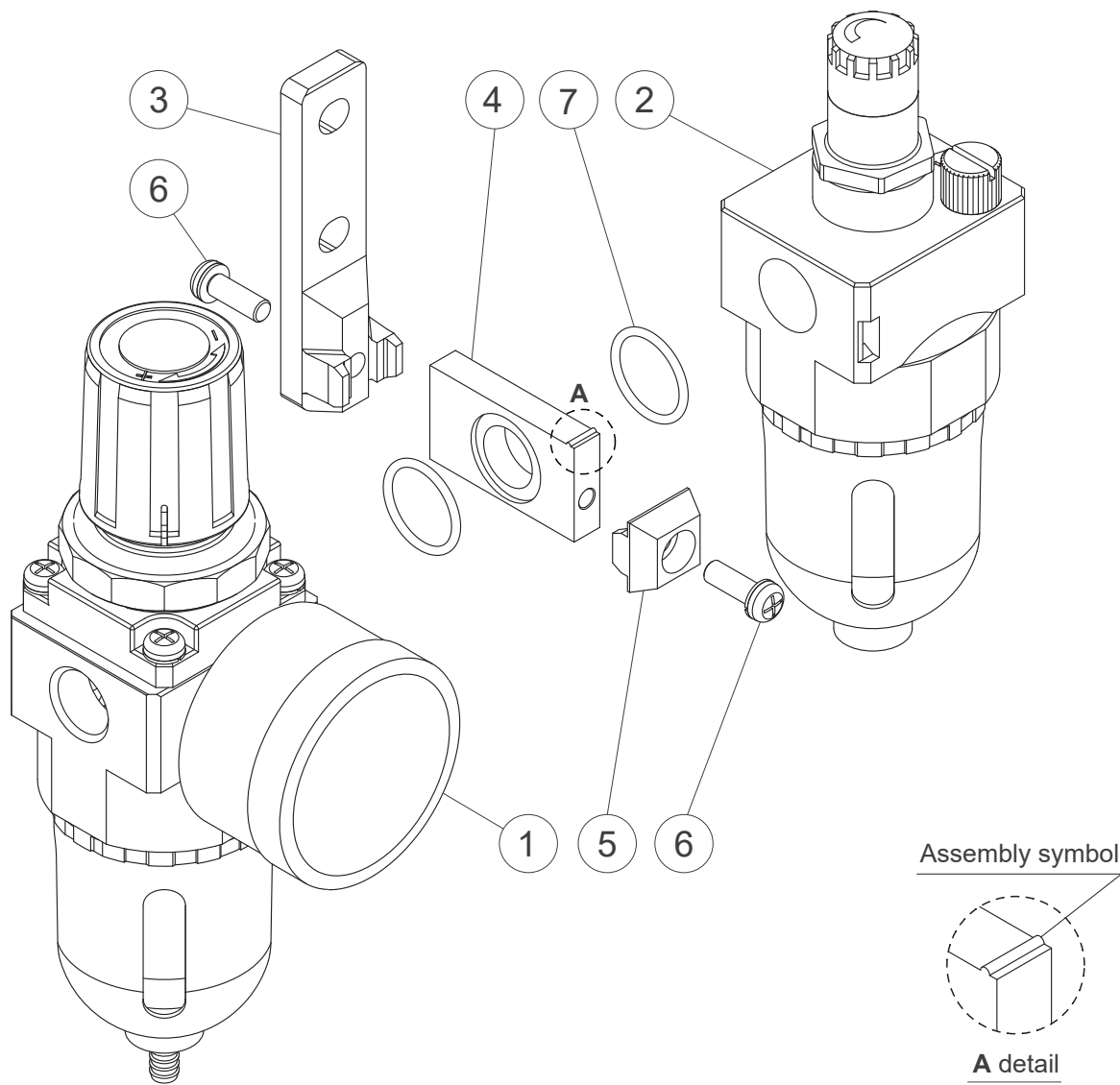


BRACKET ASSEMBLY INSTRUCTIONS

Air units (F.R.L.Unit)

MACP200(L) series



ASSEMBLY INSTRUCTIONS

- 1. Assemble the bracket to the connect block with screws.
- 2. Put the o-rings on both sides of the connect block.
- 3. Assemble MAFR and MAL to the connect block , and lock with the attachment.
- 4. Finally, tighten the screws.

**ps** Please assemble according to the instructions, and pay attention to the position of the connect block (**A** detail).

Item	Description	Qty
1	MAFR200(L)	1
2	MAL200(L)	1
3	T type bracket	1
4	Connect block	1
5	Attachment	1
6	Screw	2
7	O-ring	2