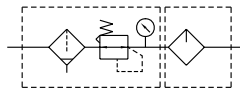


MACP402 series

AIR UNIT (F.R.L.UNIT)



Symbol



Specification

Model	MACP402		
Components	MAFR402, MAL402		
Bore No.	10A	15A	20A
Port size	3/8	1/2	3/4
Medium	Air		
Operating pressure range (*)	0.05~1 MPa		
Proof pressure	1.5 MPa		
Regulated pressure range	0.05~0.85 MPa		
Ambient temperature	- 5~+60°C (No freezing)		
Filter element	Standard: 40µm Option: 5,20µm		
Lubricating oil capacity	180c.c		
Min. flow for oil drip	200 ℓ/min		
Recommended lubricating oil	Turbine oil ISO-VG32		
Attachment	Pressure gauge(PG-50), bracket		
Weight	1846 g		

* Standard unit contains semi-auto-drain function when operating pressure below 0.05 MPa.

Order example

MACP402 – 20A – D – □ – □

MODEL

BORE SIZE

10A: 3/8
15A: 1/2
20A: 3/4

FILTER ELEMENT
Blank: 40µm
5u: 5µm
20u: 20µm

PORT THREAD

Blank: Rc thread
G: G thread
NPT: NPT thread

D: Auto drain valve (YD401)

Flow feature

10A, 15A, 20A

Primary pressure
0.7 MPa

