

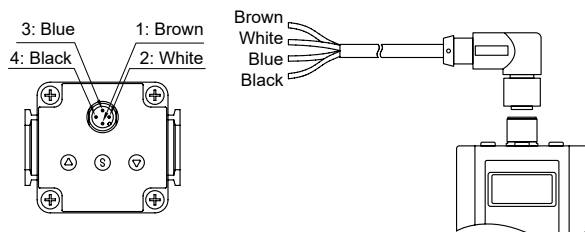
MAER200/ 300 ⚠ Precautions Read before installing

AIR UNIT (ELECTRO – PNEUMATIC REGULATOR)



Wiring

Connect the cable to the connector on the body with the wiring arranged as shown below.



Input signal:

Current, voltage signal type

| | | |
|---|-------|----------------|
| 1 | Brown | Power supply |
| 2 | White | Input signal |
| 3 | Blue | GND(COMMON) |
| 4 | Black | Monitor output |

Input signal:

Preset input type

| | | |
|---|-------|----------------|
| 1 | Brown | Power supply |
| 2 | White | Input signal 1 |
| 3 | Blue | GND(COMMON) |
| 4 | Black | Input signal 2 |

* The cables are available in both straight type and right angle type. A right angle type connector is attached facing left (towards the SUP port). The direction of the straight type arrow is aligned with socket latch.

⚠ Warning

- 1 The color of connector pins and cable conductors must be checked when wiring. Check wire color with handling precaution, since improper wire connection leads to destruction/failure and malfunction.
- 2 When the cable plug is connected to the socket of the body, please correctly align the pins with the socket latch, and then slowly lock it downwards.
Do not force to lock, it may damage the cable plug or casing, causing malfunction or abnormality.
- 3 Do not use power voltage exceeding specifications. The product could malfunction or catch fire if voltage exceeding the working range is applied.
- 4 Short-circuiting the load could result in rupture or fire.

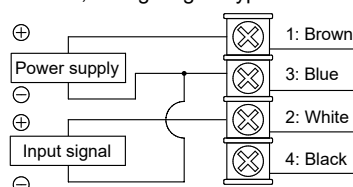
⚠ Caution

- 5 The connection between the cable plug and the wire is weak. Excessive bending may shorten the life of the plug set, causing breakage or damage.
- 6 If you need an anti-bending cable, please contact the sales.

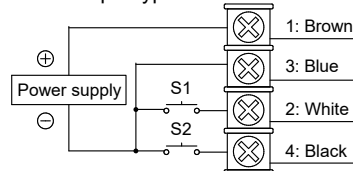
Wiring diagrams

Connect the cable to the connector on the body with the wiring arranged as shown below.

Current, voltage signal type

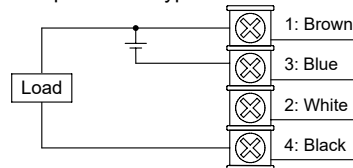


Preset input type

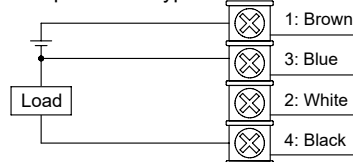


Monitor output wiring diagram

Switch output – NPN type

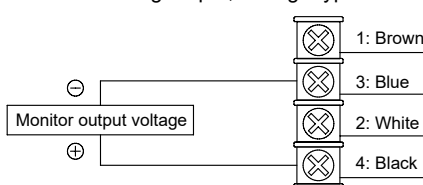


Switch output – PNP type

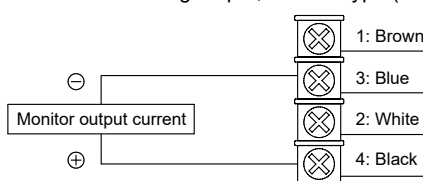


* NPN / PNP output type does not contain overcurrent protection and an error warning display, so the loop current should not exceed 160mA to avoid burning.

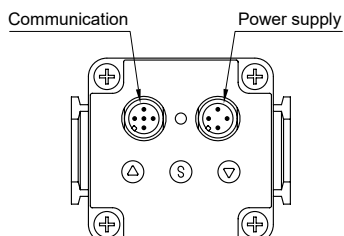
DC1~5V Analog output, Voltage type



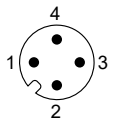
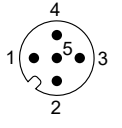
DC4~20mA Analog output, Current type (source type)



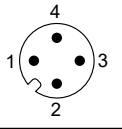
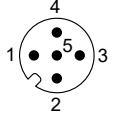
Wiring



Pin assign of product connector port in RS-232 model

| Port | Pin assign | | Wire color ^② |
|---------------------------|--|----------------|-------------------------|
| Power supply ^① |  | 1 Power supply | Brown |
| | | 2 No connect | White |
| | | 3 GND | Blue |
| | | 4 No connect | Black |
| Communication connect |  | 1 No connect | Yellow |
| | | 2 T×D | Brown |
| | | 3 R×D | White |
| | | 4 GND | Green |
| | | 5 No connect | Gray |

Pin assign of product connector port in RS-485 model

| Port | Pin assign | | Wire color ^② |
|---------------------------|---|----------------|-------------------------|
| Power supply ^① |  | 1 Power supply | Brown |
| | | 2 No connect | White |
| | | 3 GND | Blue |
| | | 4 No connect | Black |
| Communication connect |  | 1 No connect | Yellow |
| | | 2 B(-) | Brown |
| | | 3 A(+) | White |
| | | 4 GND | Green |
| | | 5 No connect | Gray |

⚠ Warning

- ① The pin-2 and pin-4 of power supply port must be prevent to connect any signal to avoid interference or malfunction.
- ② Wire color is when the option cable is used.
- ③ Do not use power voltage exceeding specifications. The product could malfunction or catch fire if voltage exceeding the working range is applied.
- ④ Please pay attention to shielding the unused pins to avoid malfunction or abnormal function caused by noise.

AIR UNIT (ELECTRO – PNEUMATIC REGULATOR)

Operating environment

⚠️ Caution

- 1 Avoid using this regulator where it will be subject to direct sunlight, water or oil, etc.
- 2 Use in place where the temperature changes drastically or at high humidity may cause damage due to dew condensation in the product.

Air supply

⚠️ Caution

- 1 Use clean compressed air that does not contain corrosive gas. Poor air quality adversely affects function and life.
- 2 For the pneumatic source, use cleaned air from which the solid, water and oil contents were eliminated sufficiently, using an air dryer, filter and oil mist filter. Recommend selecting a filtration precision of 5µm or less.
- 3 Do not use a lubricator on the supply side of this product, the lubricated air might cause malfunction. When lubrication of terminal equipment is necessary, connect a lubricator on the output side of the equipment and set a check valve.
- 4 When the secondary pressure is lowered with an input signal, the secondary air passes through the product and is discharged from the EXH port. Contamination on the secondary piping and the inside of the load will have an adverse effect on performance, etc. Keep the inside of the piping as clean as possible.
- 5 Tighten pipes with the appropriate torque to prevent air leakage and screw damage. First tighten the screw by hand to prevent damage to screw threads, then use a tool.
- 6 Tighten pipes with the appropriate torque. Pipes must be connected with the appropriate torque to prevent air leakages and screw damage. First tighten the screw by hand to prevent damage to screw threads, then use a tool.

Handling

⚠️ Caution

- 1 If supply pressure to this product is interrupted while the power is still on, the internal solenoid valve will continue to operate and a humming noise may be generated. Since the life of the product may be shortened, shut off the power supply also when supply pressure is shut off.
- 2 IF electric power is shut off while pressure is being applied, pressure will be retained on the output side. However, this output pressure is held only temporarily and is not guaranteed.
- 3 The product characteristics are confined to no flow in the pipeline. When air is consumed on the output side, pressure may become unstable.
- 4 Refer to the operation manual included with the product for details on its handling.
- 5 When the appliance set standby with 0 kPa input, please input an offset signal of residual pressure. If not, the inner solenoid valve will overaction to cut down the product lifespan.

- 6 Even when pressure is set to 0 MPa, secondary side pressure will not be completely released with less than 1%F.S. remaining. If precisely 0 MPa is required, bleed the secondary side or install a 3-way valve on the secondary side to switch the secondary side to atmospheric pressure.

⚠️ Warning

- 7 Do not use input signal exceeding specifications. This product could malfunction fire if input signal exceeding the working range is applied.
- 8 This product is adjusted for each specification at the time of shipment from the factory. Disassembling and reformation are prohibited, as this way might lead to malfunction.
- 9 If an abnormality occurs during operation, immediately turn off the power and air pressure and stop using it.

Terms

- 1 **Proof pressure:** The value of the maximum pressure that the device can endure and not to malfunction.
- 2 **Setting pressure range:** The range of the controllable pressures. Control is stopped when the input signal becomes 1% F.S. or lower.

Note. This is different from the accuracy guarantee range. See the item of linearity and hysteresis side.
- 3 **Linearity:** The error of the linear output relative to the ideal straight line, i.e. the accuracy of the analog output. It is usually expressed as a percentage compared to the entire measurement range (Full Scale: F.S.), such as 1% F.S..
- 4 **Hysteresis:** Hysteresis is the maximum difference between the rising curve and the falling curve when the input signal is varied from 0% to 100% and 100% to 0%, indicated by the percentage relative to the full scale.
- 5 **Repeatability:** Repeatability is the maximum deviation of control pressure measured when the same input signal is applied repeatedly in a short time and under the same operating conditions. Repeatability is indicated by the percentage relative to the full scale.
- 6 **Sensitivity:** Sensitivity is the minimum value of the input signal that changes the control pressure, indicated by the percentage relative to the full scale.
- 7 **Temperature characteristics:** The difference of the control pressure level made by 1°C difference of the ambient temperature (with reference temperature 25°C) is converted by calculation.

