

MAFRF401 series

AIR UNIT (F.R.UNIT)



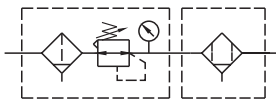
Specification

Model	MAFRF401		
Bore No.	8A	10A	15A
Port size	1/4	3/8	1/2
Medium	Air		
Operating pressure range (*)	0.05~1.5 MPa		
Proof pressure	2 MPa		
Regulated pressure range	Standard type: 0.1~0.85 MPa		
	High pressure type: 0.1~1.5 MPa		
Ambient temperature	- 5~+60°C (No freezing)		
Filter element	5 μm+0.3 μm		
Attachment	Pressure gauge (PG-20), L type bracket		
Weight	1453 g		

* Standard unit contains semi-auto-drain function when operating pressure below 0.05 MPa.

* Choose auto-drain FMRF300, the pressure range is 0.15~1 MPa.

Symbol



Order example

MAFRF401AD - 8A - □ - HA□□ - E1 - B - □

MODEL

FILTER ELEMENT
AD: 5 μm+0.3 μm

PORT SIZE
8A: 1/4
10A: 3/8
15A: 1/2

EXTERIOR COLOR
Blank: Black & silver
W: Gray & white

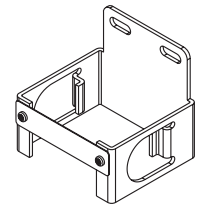
(Option) PRESSURE SWITCH
E1: MP41P-022
E2: MP41P-022-QD
E5: MP41P-042
E6: MP41P-042-QD
* Refer to page 5-13 for MP41.

PORT THREAD
Blank: Rc thread
G: G thread
NPT: NPT thread

Blank: L type bracket
B: C type bracket

Option accessories

C type bracket



(Option)

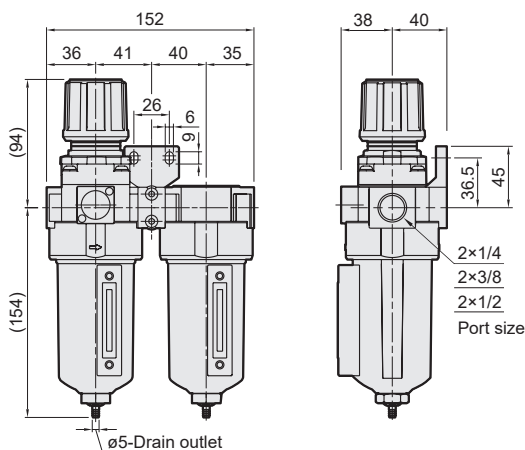
Type	Pressure gauge	Drain valve	Flow direction
Blank: Standard type	Blank: Pressure gauge (PG-20) C: External pressure gauge (PG-40) + Gauge adapter set (A-MAR401) A: Gauge adapter set (A-MAR401)	Blank: Semi-auto drain D: Auto drain valve (FMRF300)	Blank: Left to right R: Right to left
H: High pressure type	C: External pressure gauge (PG-40) + Gauge adapter set (A-MAR401) A: Gauge adapter set (A-MAR401)	Blank: Semi-auto drain	

* PG-40 (C), A-MAR302 (A) and MP41 (E*) can not be selected at the same time.

* Specification (W) gauge adapter set (A-MAR302).

MAFRF401AD

L type bracket



MAFRF401AD-B

C type bracket

