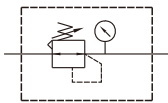


MAR301 series

PRESSURE REGULATOR



Symbol



Specification

Model	MAR301	
Bore No.	8A	10A
Port size	1/4	3/8
Medium	Air	
Max. operating pressure	1 MPa	
Proof pressure	1.5 MPa	
Regulated pressure range	0.05~0.85 MPa	
Ambient temperature	- 5~+60°C (No freezing)	
Attachment	L type bracket	
Option	Pressure gauge (PG-40)	
Weight	250 g	

Order example

MAR301 — 8A — C — □ — □

MODEL

PORT SIZE

BRACKET

PORT THREAD

8A: 1/4
10A: 3/8

Blank: L type
B3: Z type

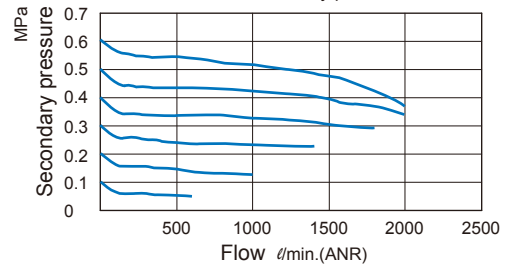
Blank: Rc thread
G: G thread
NPT: NPT thread

Blank: Without pressure gauge
C: Pressure gauge (PG-40)

Flow feature

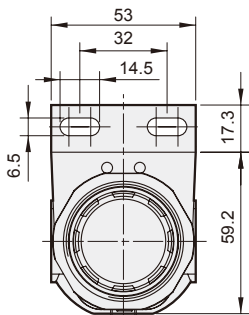
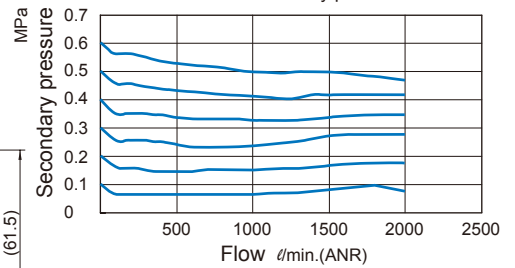
8A

Primary pressure 0.7 MPa

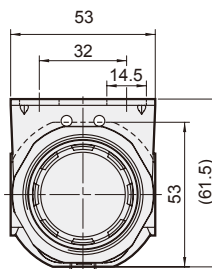
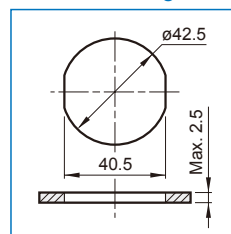


10A

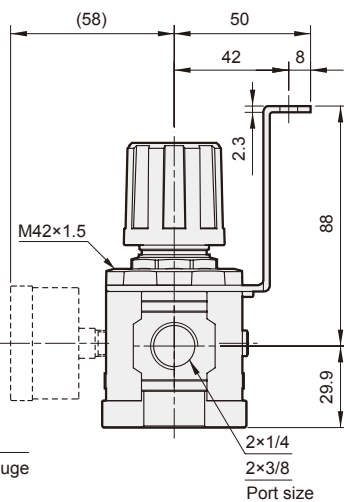
Primary pressure 0.7 MPa



Panel mounting hole



Z type bracket



L type bracket

