

MARV302 series

VACUUM PRESSURE REGULATOR



Technical data

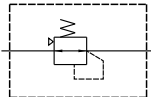


Caution for safety
(Read before installing)



Option: MP48E

Symbol



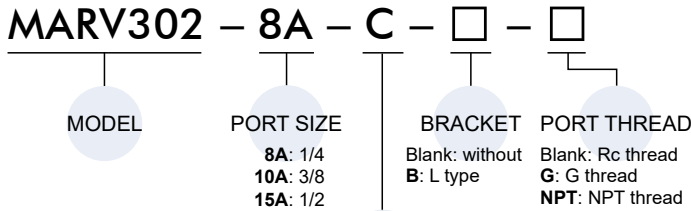
Feature

- Installed after vacuum pump and used to adjust the vacuum pressure for operational requirements of the machine.
- Can be assembled with MAFV302 to achieve modular design.
- High flow rate up to 310 ℓ /min (ANR).
- Accurate vacuum control (resolution within 0.13 kPa) and high stability.

Specification

Model	MARV302		
Bore No.	8A	10A	15A
Port size	1/4	3/8	1/2
Medium	Air		
Proof pressure (*1)	100 kPa		
Setting pressure range (*2)	-100 ~ -1.3 kPa		
Atmospheric intake consumption (*3)	0.6 ℓ /min(ANR) or less		
Knob resolution	0.13 kPa or less		
Ambient temperature	-5~+60°C (No freezing)		
Max. flow rate (*4) ℓ /min(ANR)	275	310	
Optional attachment	Pressure gauge (PGV-40S), L type bracket		
Weight	470 g		

Order example

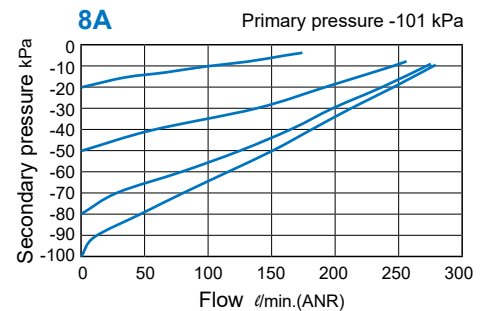


- PRESSURE GAUGE**
Blank: without gauge
C: Pressure gauge (PGV-40S)
E5: Digital pressure switch (MP48E-010)
E6: Digital pressure switch (MP48E-011)
E7: Digital pressure switch (MP48E-02R)

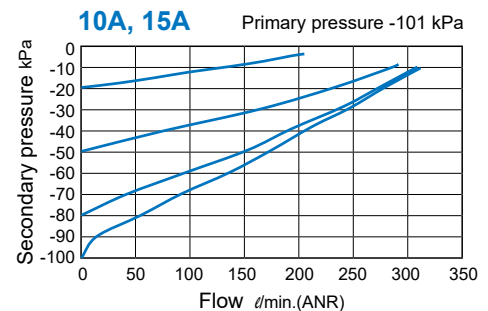
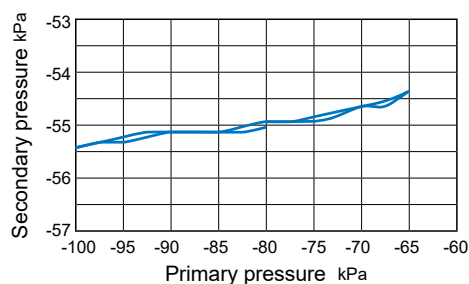
* For piping ports with NPT threads, please contact us if digital pressure sensor (E*) is required.

- *1. For vacuum regulator with pressure gauge, the gauge will be damaged if positive pressure is supplied.
*2. Use caution it varies depending on the pressure in vacuum pump side.
*3. Take air from atmosphere all the time.
*4. It is the flow rate when the secondary side is completely close and primary pressure is at -101kPa, and then adjusting secondary pressure at -80kPa, the secondary side is fully opened.

Flow feature



Pressure feature



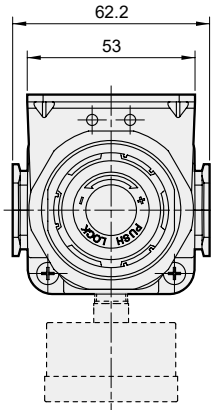
MARV302 Dimensions

VACUUM PRESSURE REGULATOR

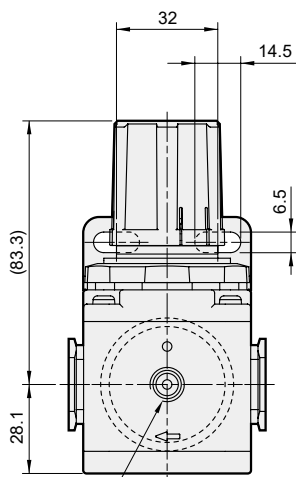
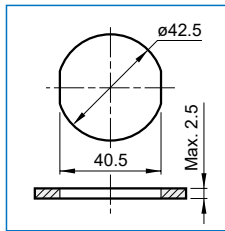


MARV302

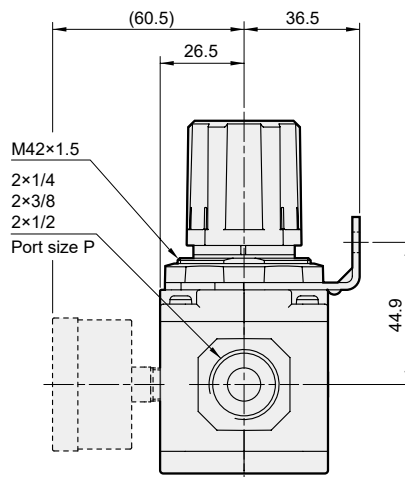
PGV-40S pressure gauge + L type bracket



Panel mounting hole



1/8
Gauge port size A



P Port thread	A Gauge port thread
Rc	Rc
G	Rc
NPT	NPT

MARV302-E*

MP48E digital pressure switch

