



Selection table



Applications



Motor selection



Controller



Motor type	Step	Transmission	Ball screw
Sensor switch	Reed switch	Anti-rotation	Linear bushing

Weight

Unit: kg

Stroke Size	SM motor			OBM / BM motor		
	30	50	75	30	50	75
16	0.95	1.08	–	0.88	1.01	–
20	1.40	1.62	1.89	1.33	1.55	1.82

Feature

- High anti-rotation accuracy.
- Compact and lightweight.
- Capable of withstanding torque and lateral force.
- Three installation directions.
- Excellent repeatability.
- Magnetic as standard.

Specification

Model	MEGS		
Size	16	20	
Positioning repeatability (mm)	±0.02		
Lead (mm)	1	2	
Ball screw (ø)	4	6	
Stroke (mm)	30 / 50	30 / 50 / 75	
Anti-rotation tolerance (°)	±0.06		
Sensor switch	RDC(V), RQC(V)		
With step motor	<input type="checkbox"/> 25	<input type="checkbox"/> 28	<input type="checkbox"/> 35
Max. speed	SM (mm/s)	–	≤ 50
	BM (mm/s)	≤ 50	–
	OBM (mm/s)	≤ 42	–
Rated moment load (N.m)	0.7		2
Rated axial load (kg)	0.7		0.95
Max. thrust *	SM (N)	–	470
	BM (N)	665	–
			206
			1196

* Thrust and operating speed are subject to variation depending on cable length, load, stroke, and mounting conditions. The thrust tolerance is ±20%. All specified values are based on 250 rpm motor operation.

Order example

MEGS – 20 L02 – 30 – BC – CK10 03 N 015

Model

Size	Ball screw lead
16 L01	1 mm
20 L02	2 mm

Stroke	
30	30 mm
50	50 mm
75 *	75 mm

*Only for size 20.

Controller	Motor
CK10	SM
CM10 *	OBM
CM20 *	BM

* Sensors would be needed.

I/O type	
N	NPN

* Not suitable for CM10.

I/O cable length	
015	1.5 m (stanadrd)
03	3 m

* Not suitable for CM10.

Motor position	
BC	Direct connection

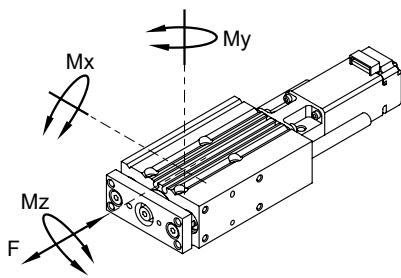
Motor + Encoder cable	
01	1 m (CM10 / CM20 only)
015	1.5 m (CK10 only)
03	3 m (Standard)
05	5 m

Life – Load relationship chart

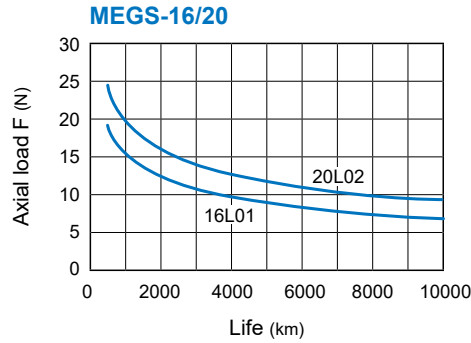
The predicted service life under axial load F and moment M is shown in the charts.

$$M = M_x + M_y + M_z$$

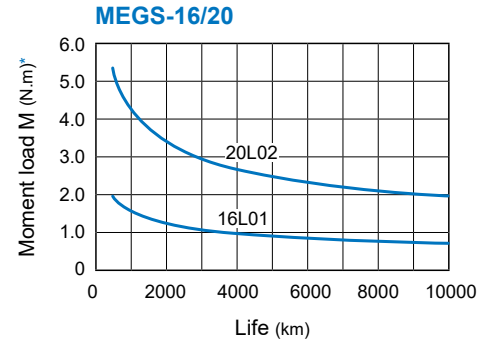
* M is the total moment applied.



Life – Axial load relationship chart



Life – Moment load relationship chart

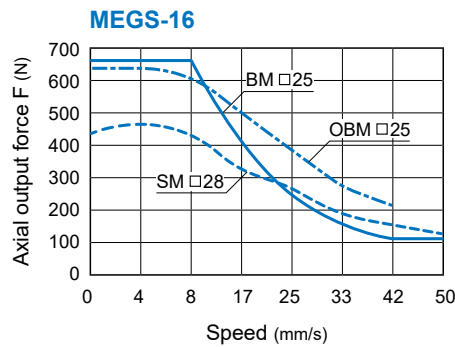


* Note: Use the max value M when the rod is fully extended.

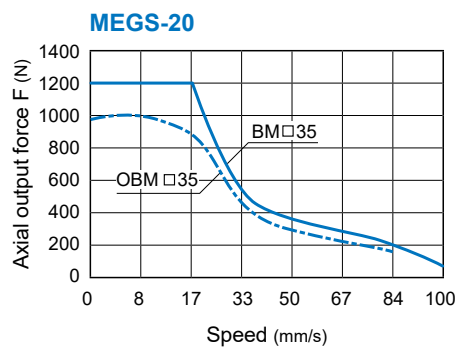
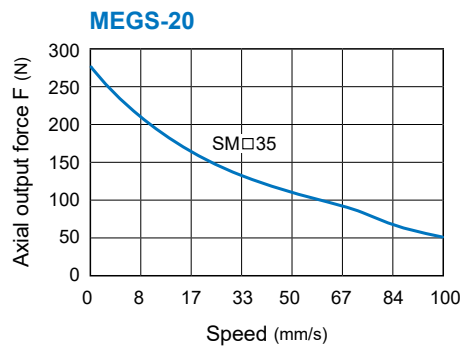
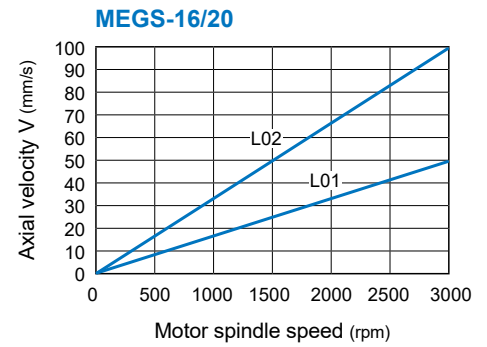
Motor spindle speed – Axial output force chart

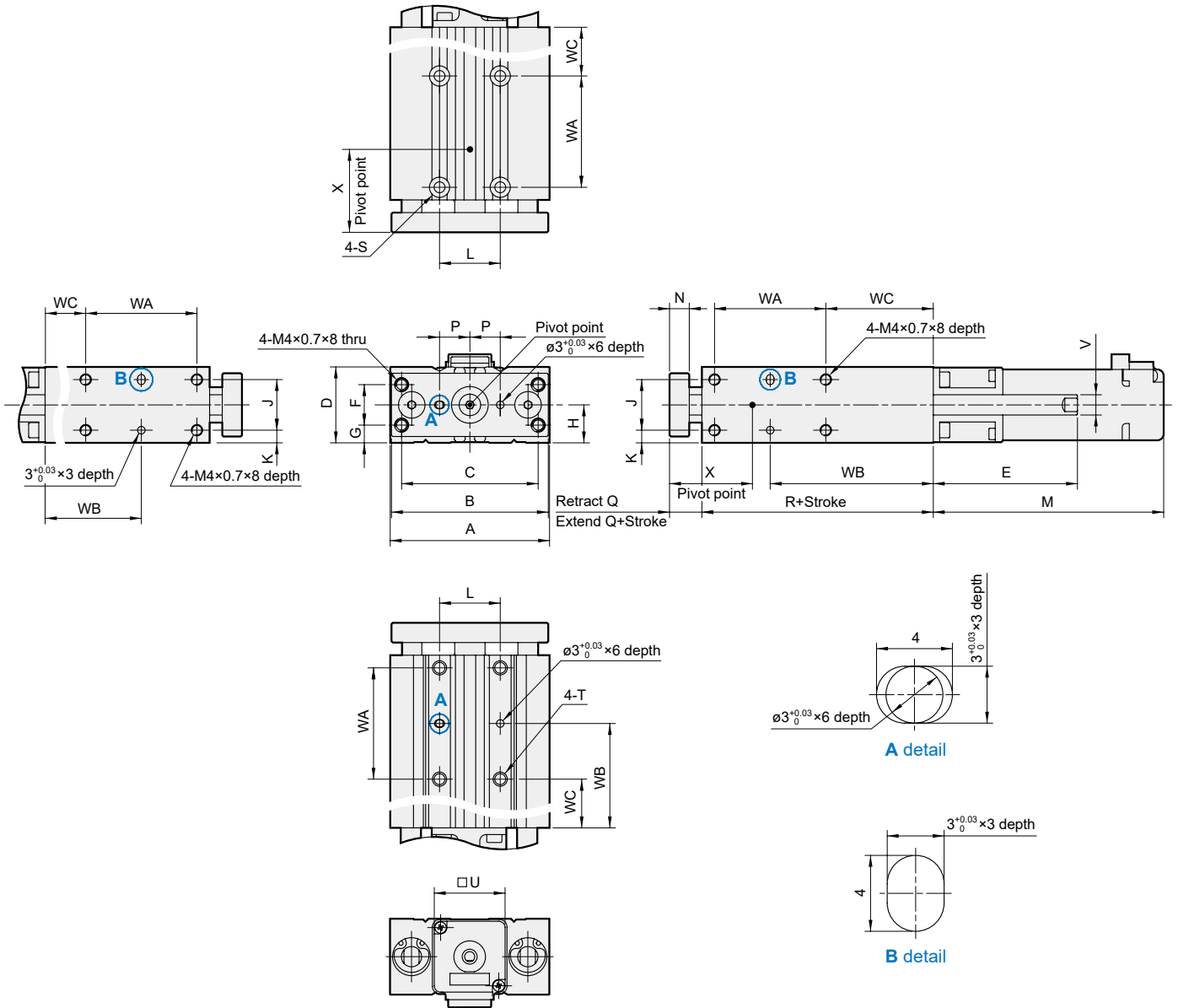
Speed – Axial velocity relationship chart

Motor spindle speed – Axial output force relationship chart



Motor spindle speed – Axial velocity relationship chart





Code Size	A	B	C	D	F	G	H	J	K	L	N	P	Q	R	S	T	U	V
16	63	62	54	30	16	7	15	20	5	24	8	12	13	41.5	$\phi 4.3$ thru, c'bore $\phi 8 \times 4.5$ dp	M5x0.8x10 dp	28	8
20	84	81	70	36	18	9	18	28	4	28	10	14	16	41.0	$\phi 5.2$ thru, c'bore $\phi 9.5 \times 5.5$ dp	M6x1.0x12 dp	35	10

Code Stroke Size	E			WA			WB			WC			X
	30	50	75	30	50	75	30	50	75	30	50	75	
16	32.5	52.5	-	24	44	-	54.5	64.5	-	42.5	42.5	-	28
20	35	55	80	24	44	44	42	52	77	30	30	55	33.5

Code Motor Size	M		
	SM	BM	OBM
16	91.1	77	68
20	83.6	94.6	84.6