

MESF2 series

MINIATURE ELECTRIC ACTUATOR (WITH MOTOR)



mindman



Selector table



Applications



Motor selection



Controller



Motor type	Step motor	Transmission	Ball screw
Environment	Standard	Guide type	Cross roller guide

Specification

Model	MESF2			
Size	16	20		
Positioning repeatability (mm)	±0.02			
Lead (mm)	2	2	8	
Maximum speed *1	Motor SM/ BM (mm/s)	≤50	≤100	≤400
	Motor OBM (mm/s)	≤50		≤200
Rated load *2	Horizontal (kg)	3	6	1.5
	Vertical (kg)	0.8	1.8	0.8
Max. thrust *1,3,4 (N)	18 ~ 60	64 ~ 195	18 ~ 48	
Stroke (mm)	30 / 50 / 75	30 / 50 / 75 / 100		
Motor size (mm)	□20	□25		
Rated voltage	DC 24V±10%			
Sensor switch	RDC(V), RQC(V)			

*1. The speed and thrust may change depending on the cable length, load, stroke and mounting conditions.

*2. The rated load capacity decreases as the speed increases.

*3. The accuracy of max. thrust is ± 20%.

*4. Max. thrust for MESF2 is from 30% ~ 90%.

Order example

MESF2 – 16 L02 – 30 – CK10 03 N 015

Model	Size	Ball screw lead	Stroke	I/O type	I/O cable length
16	L02	2 mm	30	N NPN	015 1.5 m (standard)
	L08	8 mm	50		03 3 m
20	L02	2 mm	75	* Not suitable for CM10.	* Not suitable for CM10.
			100*		
			100*		

* Only for size 20

Controller	Motor	Motor + Encoder cable
CK10 *4	SM	01 1 m *2
CM10 *1	OBM	015 1.5 m *3
CM20 *1	BM	03 3 m (standard)
		05 5 m

*1. Sensors would be needed.

*2. Only for CM10 / CM20.

*3. Only for CK10.

*4. Only for size 16.

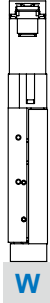
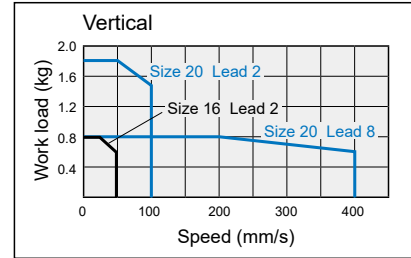
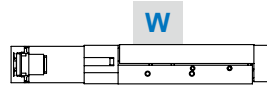
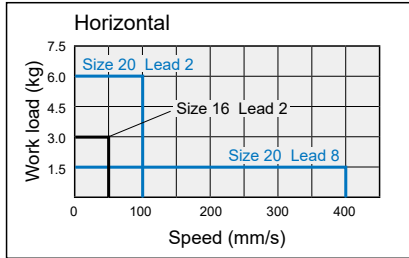
Accessory kits

AK – ES2 – 30

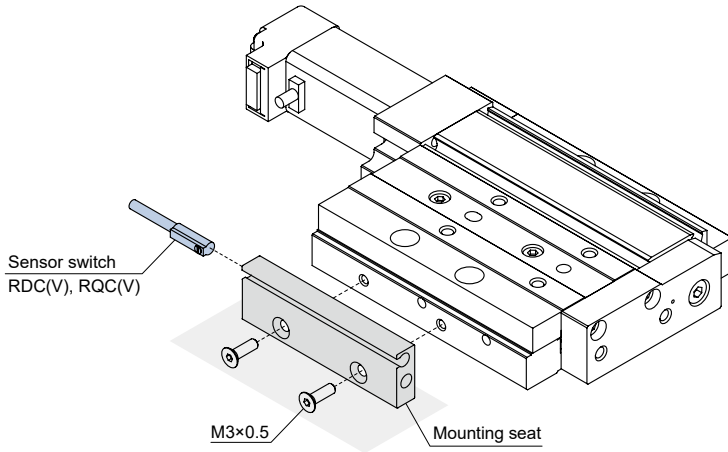
Accessory kits	Stroke
	30 30 mm
	50 50 mm
	75 75 mm
	100 100 mm*1

*1. Only for size 20.
*2. With mounting seat and bolt.

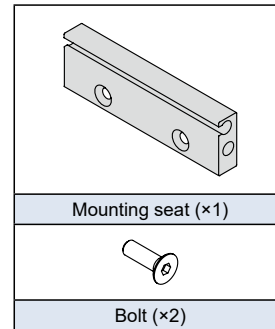
Speed-load curve diagram

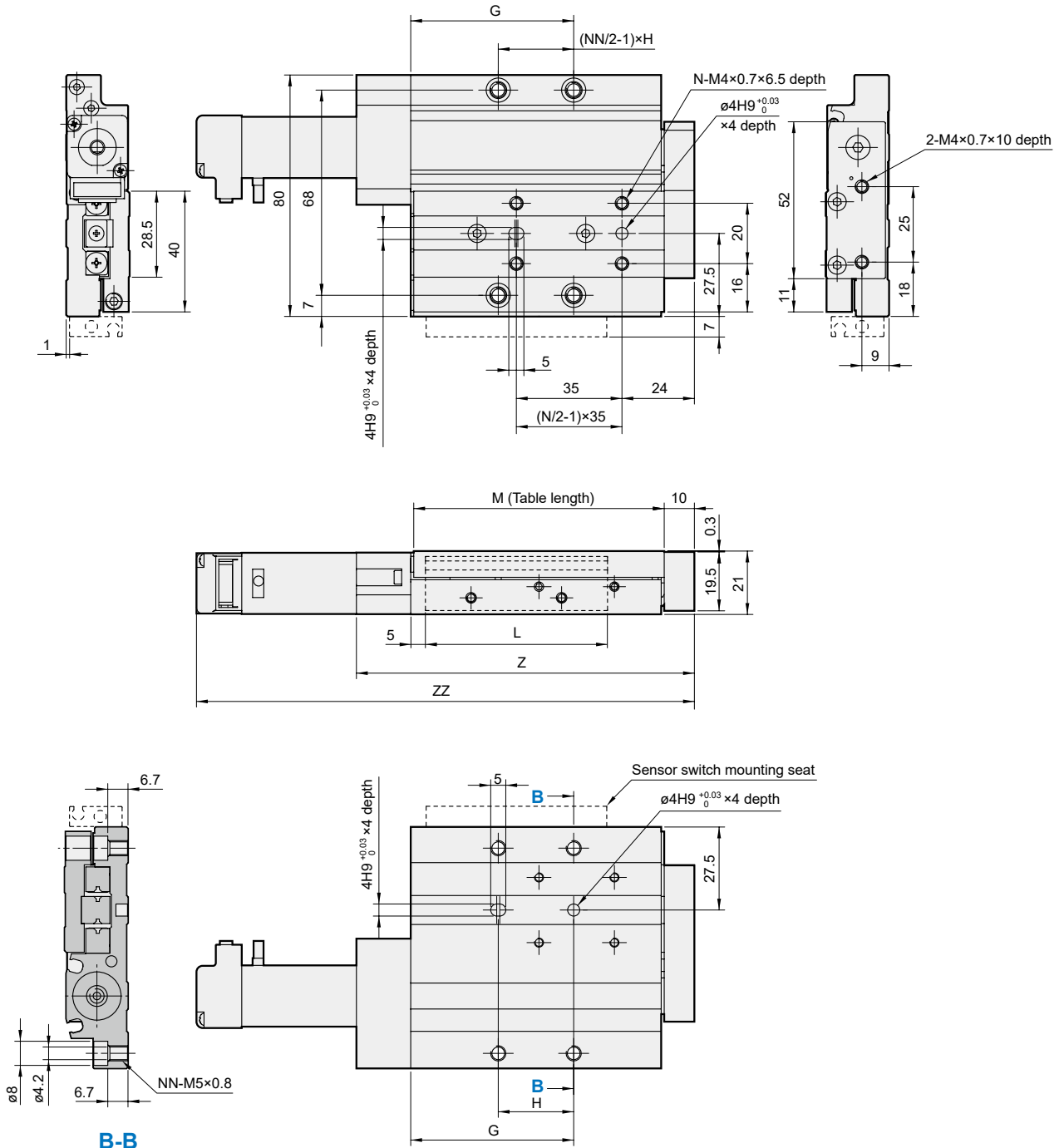


Sensor switch mounting

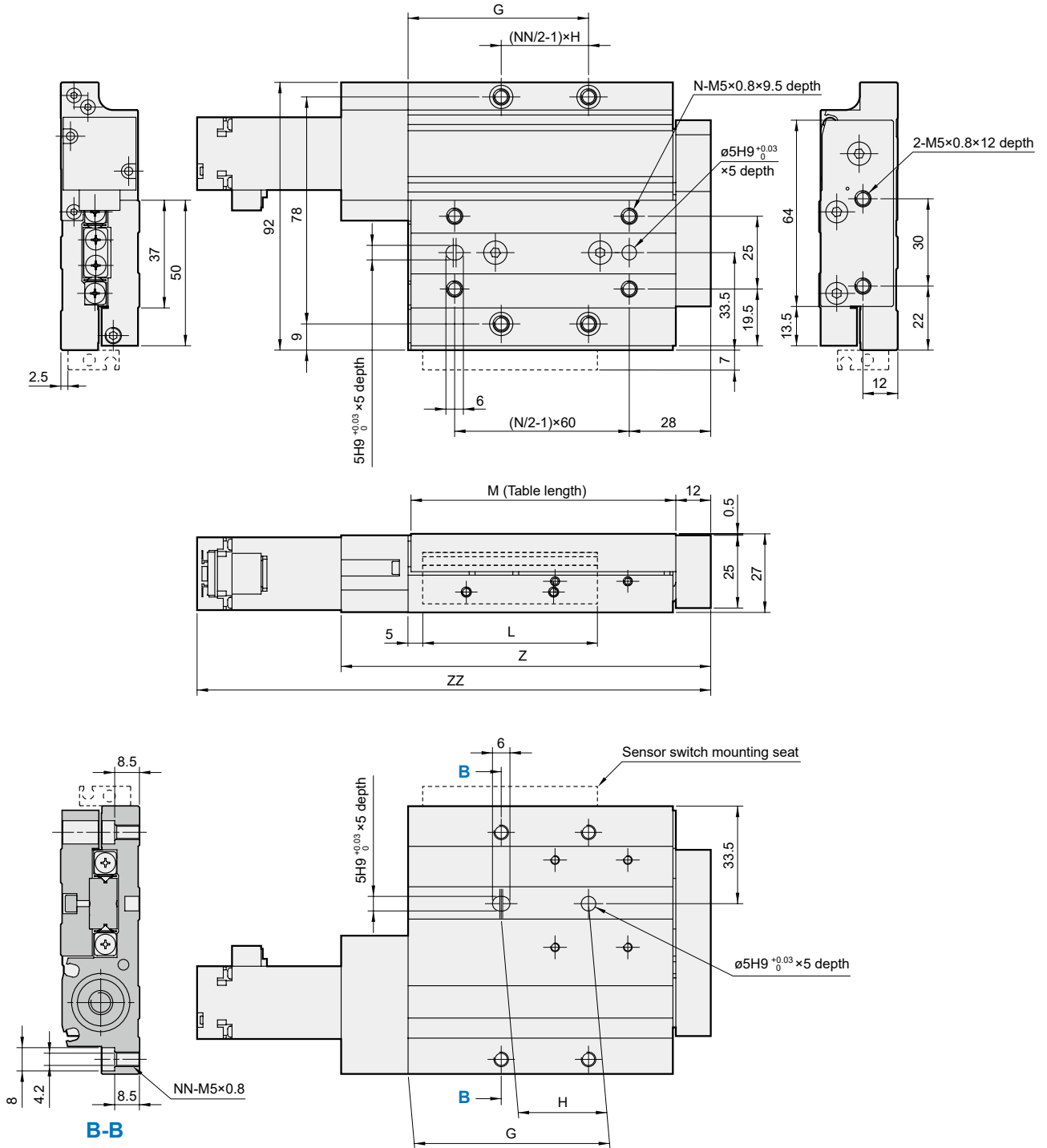


Accessory kits





Stroke	N	NN	G	H	L	M	Z	ZZ			Weight (g)
								CK10	CM10	CM20	
30	4	4	54	25	60	83	112	165	158	168	516
50	6	4	84	55	90	113	142	195	188	198	691
75	6	6	120	45	135	159	188	241	234	244	910



Stroke	N	NN	G	H	L	M	Z	ZZ			Weight (g)
								CK10	CM10	CM20	
30	4	4	62	30	60	91	127	-	166.5	176.5	933
50	4	4	77	45	90	113	149	-	188.5	198.5	1139
75	6	6	122	45	135	162	198	-	237.5	247.5	1397
100	6	6	152	60	160	211	247	-	286.5	296.5	1654