



Pneumatic Equipment

Cold air generator

**JET COOLER**

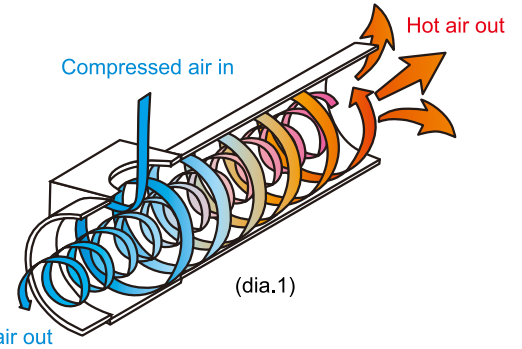
**MJC**



## Features

Jet out cooler air maximum 60°C lower than the inlet air only by supplying compressed air.

- Three kinds of connection type : (1) hose connection (2) pipe taper male thread (3) pipe taper female thread.
- Uses the theory of vortex, no moving parts are used in the construction, hence long life sustainability.
- Does not require coolant or an electrical source, utilises the high speed flow of compressed air for generating cool air from hot air. Ideal for applications where rapid cooling is required, (ie) Spot Welding.
- Can produce consistent supply of cool air even when the supply in is 40 Degrees C. By changing air consumption you can simply change the cooling temperature.



**1** Compressed air supply only

**2** No electricity

**3** Long life

**4** User friendly

**5** Two models

## Order example

MJC-150K - S - □

### MODEL

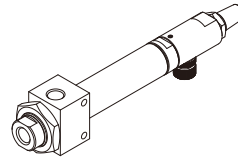
MJC-150K  
MJC-300K  
MJC-450K  
MJC-600K

### ACCESSORY

Blank: Standard type  
S: Silencer  
Decrease 8-12dB  
(based on the flow rate)

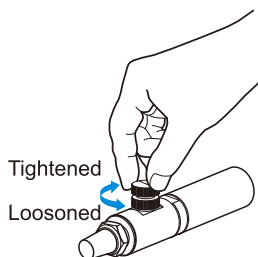
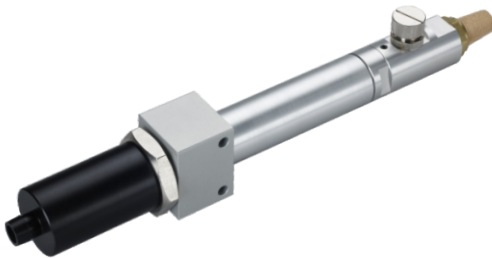
### PORT THREAD

Blank: Rc thread  
G: G thread  
NPT: NPT thread



## Cool air adjustment

**MJC-K** Temperature drop 60°C

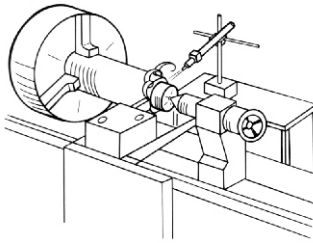


Adj. screw(up)  
Adj. nut (down)  
※ When the adj. screw has set, lock the adj. nut.

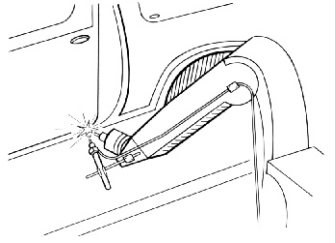
- Rapid temperature drop.
- Panel mounting option available.
- Can be fitted with silencer on cold side, thus reducing noise.
- Can be piped on the hot side.

## Application

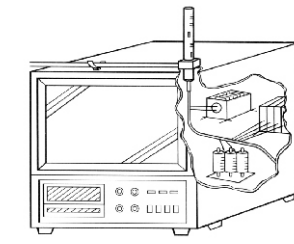
### Cooling whilst machining plastic



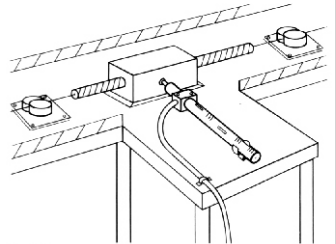
### Cooling whilst spot welding



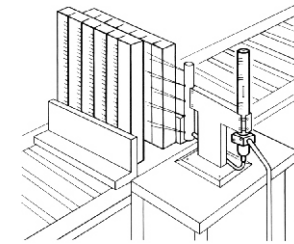
### Cooling internals of camera control box



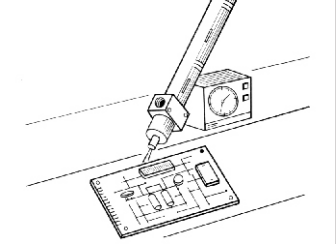
### Cooling whilst wire cutting



### Cooling soldering items



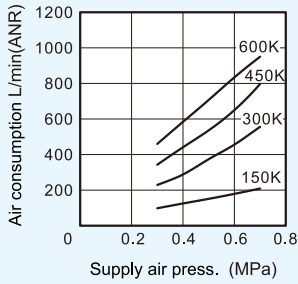
### Cooling whilst welding



- Please make sure that air filters and regulators are equipped with the air line system.
- For use in cold temperature, use an air dryer to prevent freezing.

# Capacity

## Air consumption

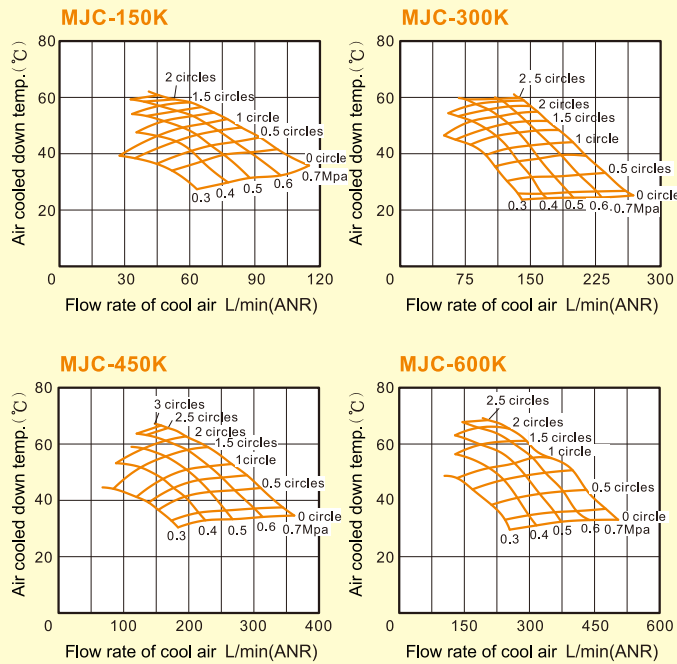


## Specification

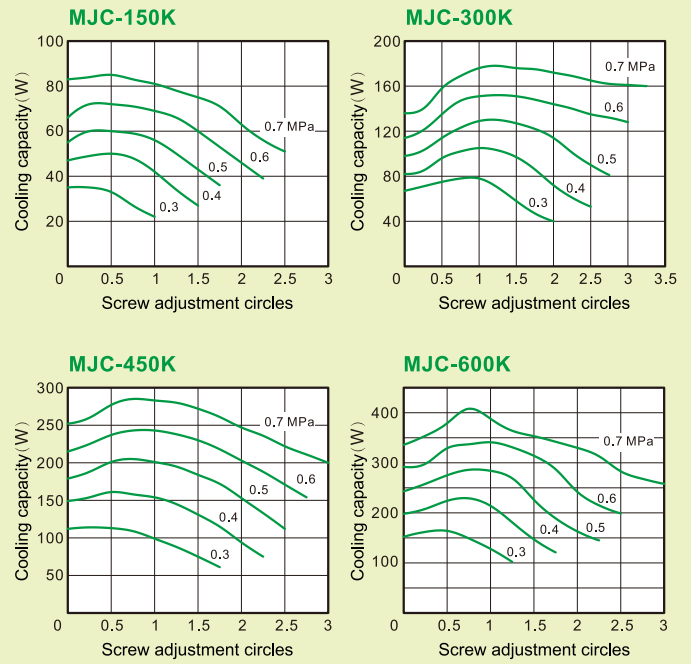
Model	Working pressure (MPa)	Max. temp. drop (°C)	Cool air out port	Weight (kg)
<b>MJC-150K</b>	0.3~0.7	60	Rc1/8	0.25
<b>MJC-300K</b>	0.3~0.7	60	Rc1/4	0.30
<b>MJC-450K</b>	0.3~0.7	60	Rc3/8	0.60
<b>MJC-600K</b>	0.3~0.7	60	Rc3/8	0.60

※ The max. temp. drop is the difference in temp. between the input and the output.

## Temperature drop of cool air

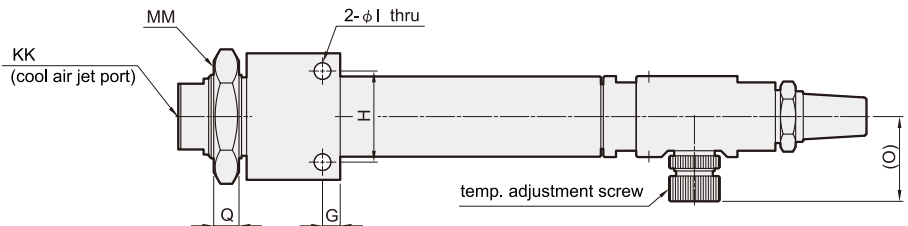
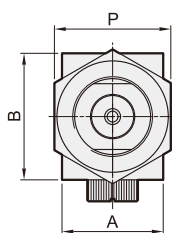
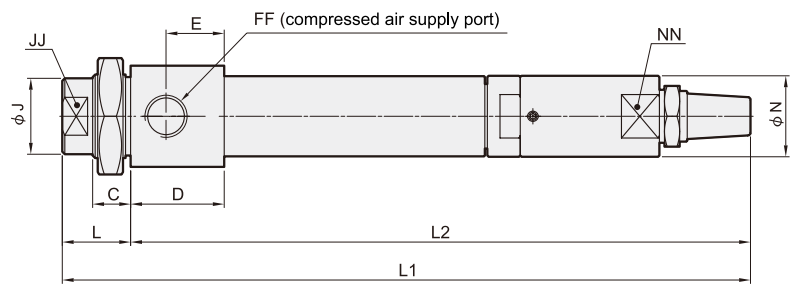
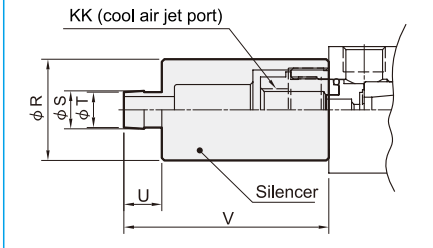


## Cooling capacity



## Dimension

### Silencer (Option)



Code Model	A	B	C	D	E	FF	G	H	I	J	JJ	KK	L	L1	L2	MM	N	NN	O	P	Q	R	S	T	U	V
<b>150K</b>	30	35	13	24	15	Rc1/8	5	24	4.5	20	17	Rc1/8	21	198	177	M24 × 1.5	20	18	22	32	7	30	11	10	10	60
<b>300K</b>	35	40	15	28	17	Rc1/4	5	30	4.5	22	19	Rc1/4	23	204	181	M27 × 1.5	22	19	22	36	7	32	13	12	10	63
<b>450K / 600K</b>	40	50	15	37	23	Rc3/8	7	36	6.6	30	26	Rc3/8	27	272	245	M33 × 1.5	32	27	31	46	10	40	15	14	15	81