

# MVHF-2\*/3\*/5\* series



## HAND VALVE

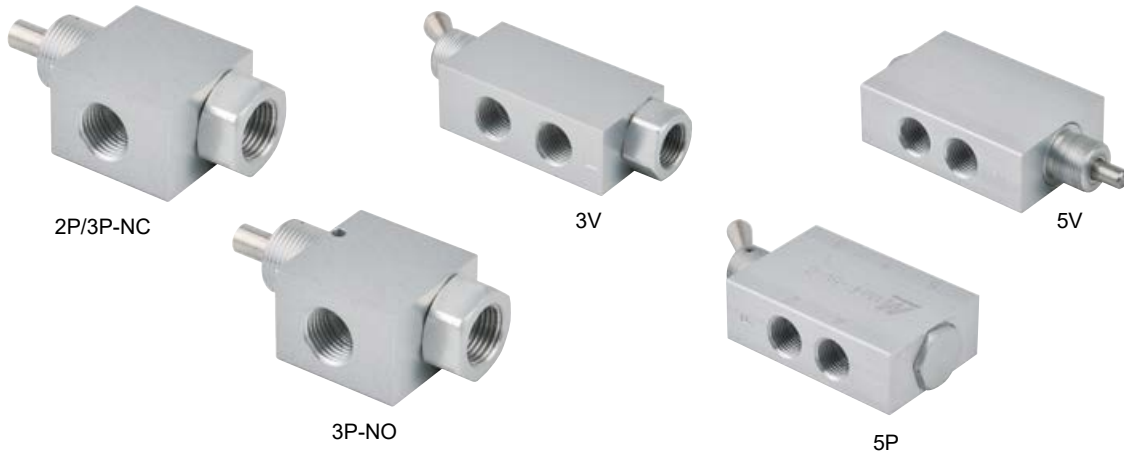
Mindman



Accessories



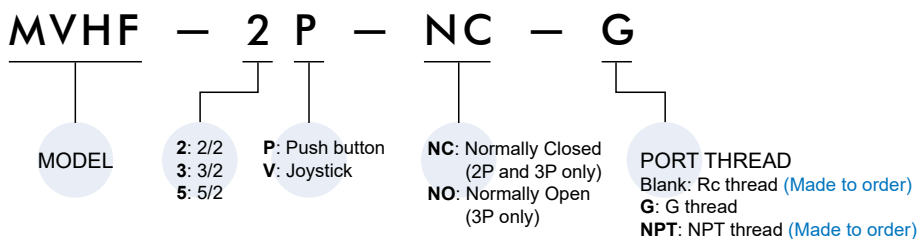
Pilot actuator



### Specification

Type	2P	3P		3V	5P	5V
		N.C. (Normally closed)	N.O. (Normally open)	-	-	-
Ports	1/8"					
No. of port	2	3			5	
No. of position	2					
Medium	Air			Air, water, oil		
Stem travel	1/8"			60°	1/8"	80°
Input pressure	150 psig max.					
Effective orifice	7.2 mm <sup>2</sup>	5.7 mm <sup>2</sup>		-	8.6 mm <sup>2</sup>	4.3 mm <sup>2</sup>
Air flow	-			@50 psig 14 SCFM @100 psig 25 SCFM	-	-
Force for full stem travel	38 oz. nominal			2.5 oz. nominal	72 oz. nominal	3 oz. nominal
Temperature range	32°F~230°F					
Exhaust	-	Hole to atmosphere			-	
Mounting	15/32-32 male thread nuts and lock washers furnished					
Weight	65 g	69g		118g	171g	172g

### Order example



# MVHF-2\*/3\*/5\* Dimensions

## HAND VALVE



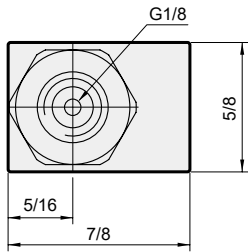
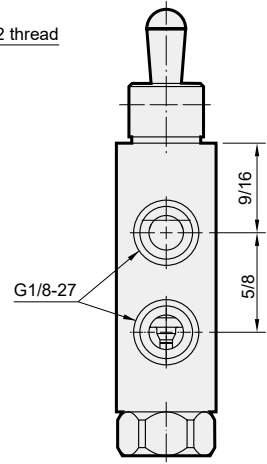
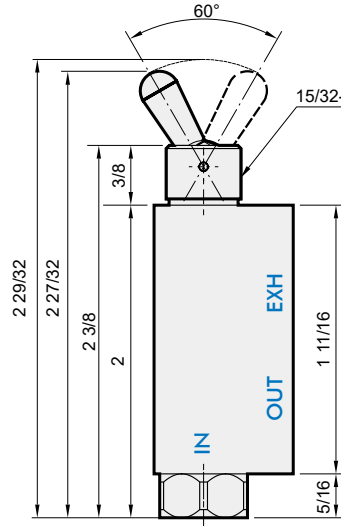
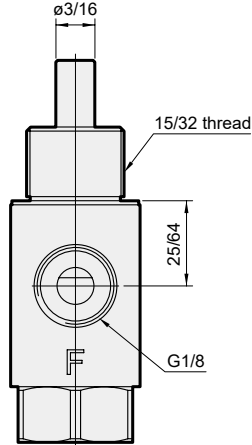
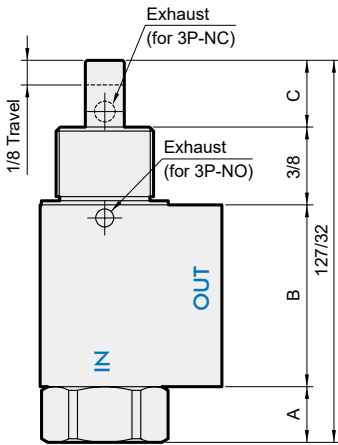
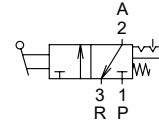
### 2P/3P

### 2P-NC

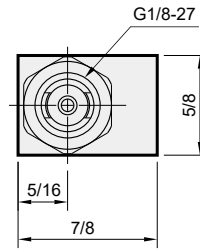
### 3P-NC

### 3P-NO

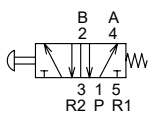
### 3V



Type	A	B	C
2P/3P-NC	5/16	27/32	-
3P-NO	9/32	7/8	41/128



### 5P



### 5V

