

MVHS series

HAND SLIDE VALVE



Technical data



Caution for safety
(Read before installing)



Specification

| Model | MVHS | | | | |
|--------------------------------------|------------------------|------|-------|-------|------|
| Bore No. | 8A | 10A | 15A | 20A | |
| Port size | 1/4 | 3/8 | 1/2 | 3/4 | |
| Medium | Air | | | | |
| Operating pressure range | 0.05~1 MPa | | | | |
| Effective orifice (mm ²) | P→A | 30.4 | 32.3 | 63.5 | 85.4 |
| | A→R | 34.1 | 36.8 | 71.7 | 90.7 |
| Ambient temperature | -5~+60°C (No freezing) | | | | |
| Weight | 40 g | 54 g | 132 g | 148 g | |

Order example

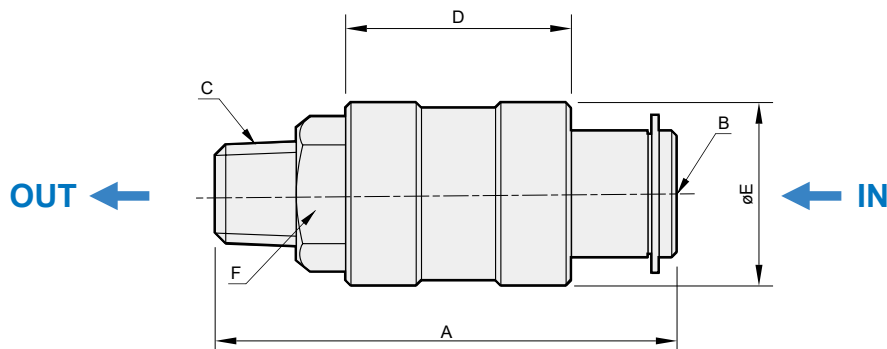
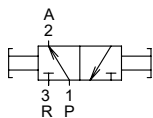
MVHS — 8A — G

MODEL

8A: 1/4
10A: 3/8
15A: 1/2
20A: 3/4

PORT THREAD
Blank: Rc thread
G: G thread
NPT: NPT thread

MVHS-*A



| Code Model | A | B | C | D | E | F |
|-----------------|----|-------|------|----|------|-----|
| MVHS-8A | 58 | Rc1/4 | R1/4 | 32 | 25.5 | ⊘19 |
| MVHS-10A | 57 | Rc3/8 | R3/8 | 32 | 31.5 | ⊘22 |
| MVHS-15A | 91 | Rc1/2 | R1/2 | 49 | 38.5 | ⊘27 |
| MVHS-20A | 91 | Rc3/4 | R3/4 | 49 | 42 | ⊘35 |