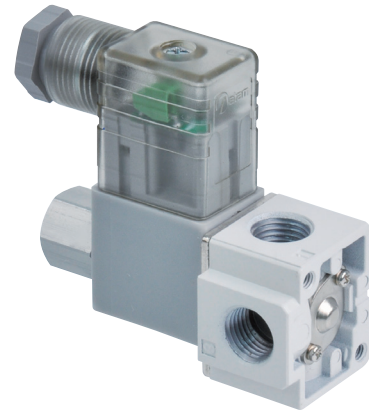


ENERGY-SAVING TERMINAL

Direct-Acting Solenoid Valve



MVSV-220 series



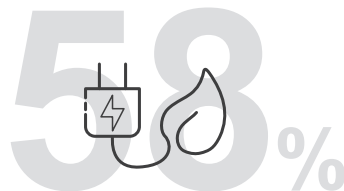
MVDC-300 series

Features



Rated Voltage

DC24V



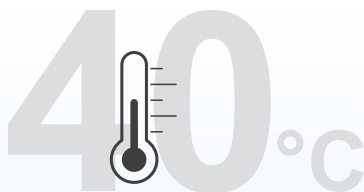
Energy Saving 58%

Standard type 7W
Energy saving type 3W



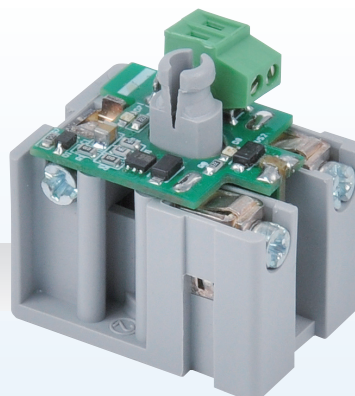
LED display

Full-angle visible LED,
capable of quickly diagnosing
and troubleshooting.

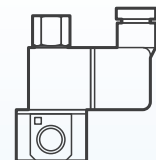


Low Temperature

Long-time powered on,
overall temperature
approximately 40°C



[Energy-saving terminal]



Solenoid Valves

3/2 Solenoid valve