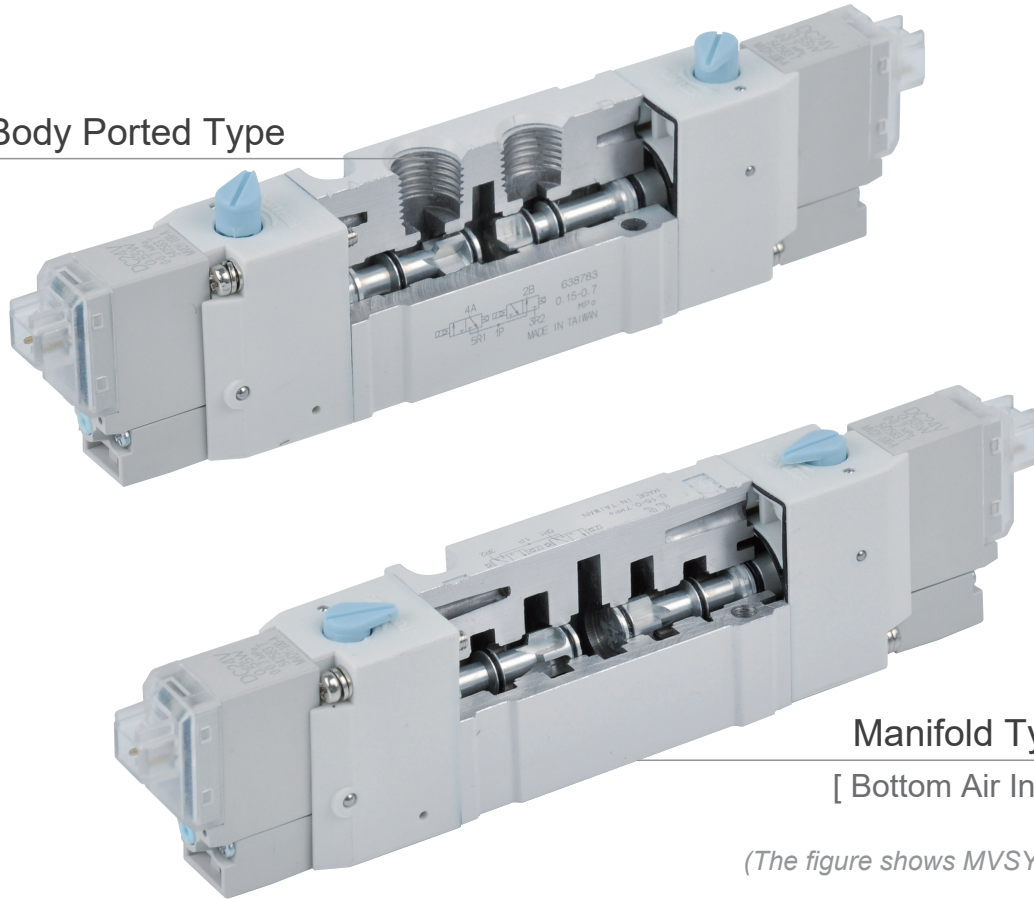


DUAL 3-PORT SOLENOID VALVE

5 Port 4 Position

Body Ported Type



Manifold Type

[Bottom Air Inlet]

(The figure shows MVSY-156 series)

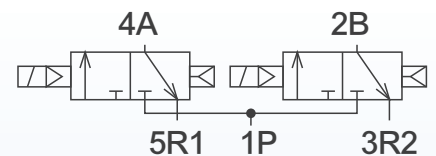
MVSY-156, MVSP-156 series

Features

50%



EX: 4E23



Space Saving 50%

Same size as a 5-port valve, equipped with two 3-port valves inside to save installation space

Various Options

Suitable for 5-port valve manifolds, can be mixed and installed on the same manifold

5 Port 4 Position Valve

Two 3-port valves can operate independently and be used as a 5-port 4-position valve