

MXCD series

2/2 WAY N.C. DIAPHRAGM TYPE SOLENOID VALVE



Selection table



Seal material



Caution for safety
(Read before installing)



Caution

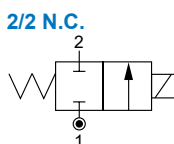
- In order to prolong operating life, it is better to allocate pipe horizontally and coil to face upward.
- Voltage drop range is within $\pm 10\%$.
- Pressure of voltage DC is 70% of voltage AC only.
- Combined diaphragm design assures no breaking.
- Fluid temp.: $-10\sim+80^{\circ}\text{C}$ (Naphtha 120°C)

Not for fluid of

- Liquid when heat, solid when cool.
- Corrosive fluid.
- Viscosity over 50 cst.

Weight

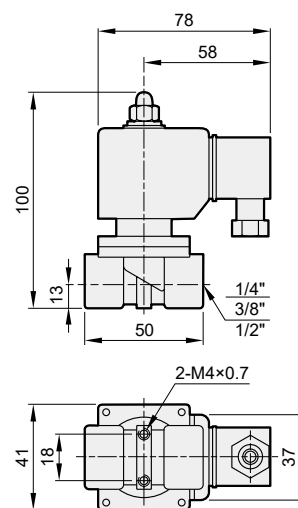
Model	MXCD		
Code	8	10	12
N.W (kg)	0.61	0.6	0.59



Order example

MXCD	□	— 10 —	N —	G —	A —	AC110 —	G
MODEL	BODY MAT'L	PORT SIZE	SEAL MAT'L	FLUID	VOLTAGE	PORT THREAD	
	Blank: Brass S: S.Steel (*1)	8: 1/4" 10: 3/8" 12: 1/2"	N: NBR V: Viton	W: Water A: Air LO: Light oil (*2)	AC220V(50/60)Hz AC110V(50/60)Hz DC24V	Blank: Rc thread G: G thread NPT: NPT thread	
			COIL				
			G: Square DIN				

*1. Stainless steel material is custom made.
*2. Note, if diesel fuel or gasoline.



Specification

Model MXCD: Forged brass body, for water, air, naphtha.							
Code (Port size)	Seal Mat'l	Orifice mm	Max. operating pressure diff. (0~bar)				CV
			Water	Air	Naphtha	acid & alkali (S.Steel)	
8(1/4")	N V	11	0.3~20	0.3~20	0.3~20	0.2~20	2.4
10(3/8")		12	0.3~20	0.3~20	0.3~20	0.2~20	2.7
12(1/2")		12	0.3~20	0.3~20	0.3~20	0.2~20	2.7