

# Large Suction Flow Vacuum Generator

## VLCP

**NEW**



Vacuum generator with a large suction flow rate suitable for conveying powders, granules, etc.

suction flow rate  
**1,000**  
L/min[ANR]



VLCP50

suction flow rate  
**4,800**  
L/min[ANR]



VLCP100

suction flow rate  
**14,300**  
L/min[ANR]



VLCP135

## Characteristics

With a maximum flow path diameter of  $\varnothing 135$  mm, a variety of workpieces can be transported.

High efficiency.

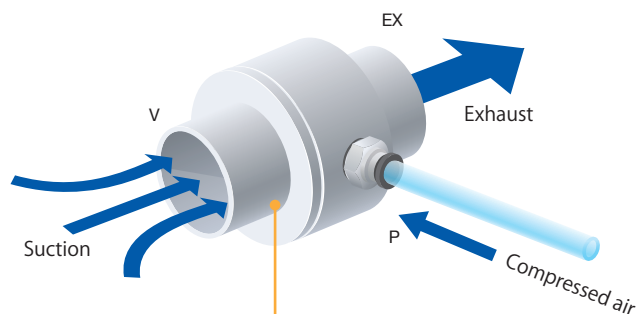
The suction flow rate averages 2.7 times the air consumption rate.

\* Estimated value at a supply pressure of 0.5 MPa.

Maintenance free.

The straight-through design with a large diameter prevents clogging from powders and granules, requiring no maintenance such as disassembly or cleaning.

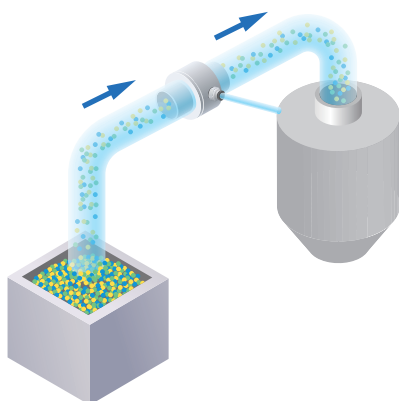
The suction flow rate can be controlled by adjusting the supply air.



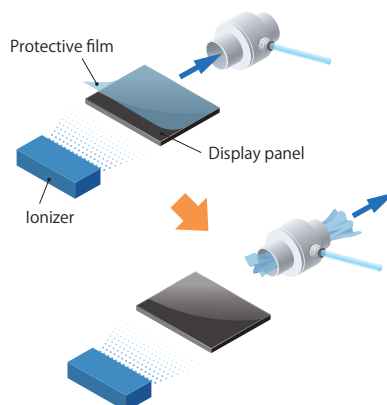
It can convey powders, pellets, etc. and also discharge smoke, mist, etc. Its large flow path diameter allows for waste collection as well.

## Usage Examples

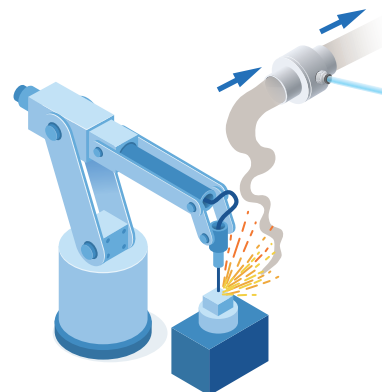
Conveyance of resin pellet



Collection of peeled film



Local exhaust



# Large Suction Flow Vacuum Generator

## Model Designation (Example)



(1) Large Suction Flow Vacuum Generator

(2) Size

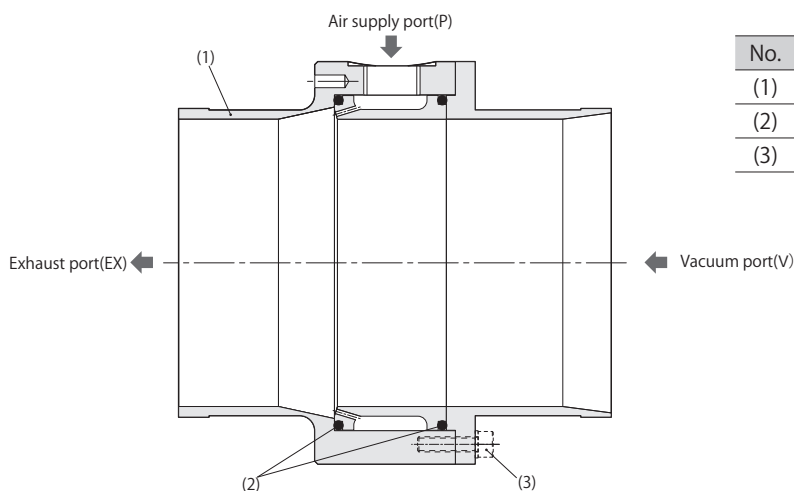
| Code | Pipe diameter (mm) | Vacuum level (kPa) | Suction flow (L/min[ANR]) | Air consumption (L/min[ANR]) | Flow path diameter (mm) |
|------|--------------------|--------------------|---------------------------|------------------------------|-------------------------|
| 50   | ø51                | -1.5               | 1,000                     | 600                          | ø44.8                   |
| 100  | ø101               | -0.1               | 4,800 (*)                 | 1,200                        | ø95.0                   |
| 135  | ø144               | -0.5               | 14,300 (*)                | 6,000 (*)                    | ø135.0                  |

\*The suction flow rate is a theoretical value when a supply pressure of 0.5 MPa is applied.

## Specifications

|                                 |  |
|---------------------------------|--|
| Fluid medium                    | Air                                      |
| Operating press. range          | 0 to 0.7 MPa                             |
| Operating temp. range           | -5 to 80°C (No freezing)                 |
| Suction and exhaust noise level | 98 dB[A] max. (Supply pressure: 0.5 MPa) |

## Sectional Drawing



| No. | Parts     | Material (Treatment) |
|-----|-----------|----------------------|
| (1) | Body      | Aluminum (Anodized)  |
| (2) | O-ring    | NBR                  |
| (3) | Set screw | SUS304               |

## ⚠ Safety instructions for the product

### ⚠ Caution

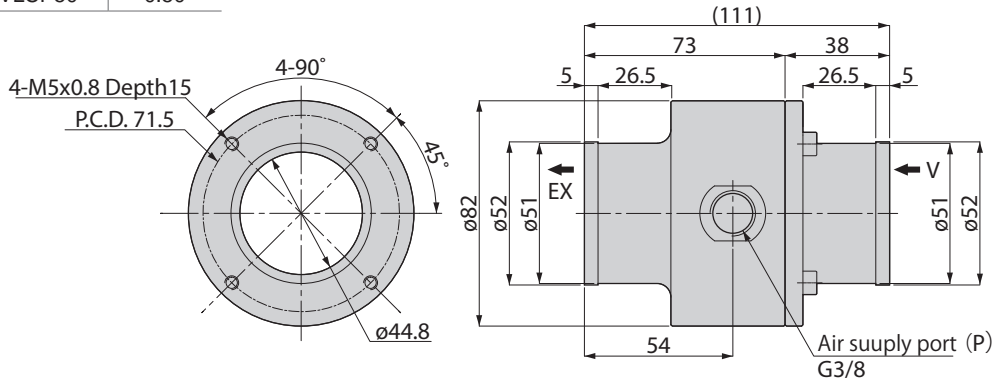
If the suction and exhaust noise level is a problem, please take safety measures such as covering the product with a sound insulating plate or using protective equipment.

## Dimensional Drawing

### VLCP50

Pipe diameter  $\varnothing 51$  mm type

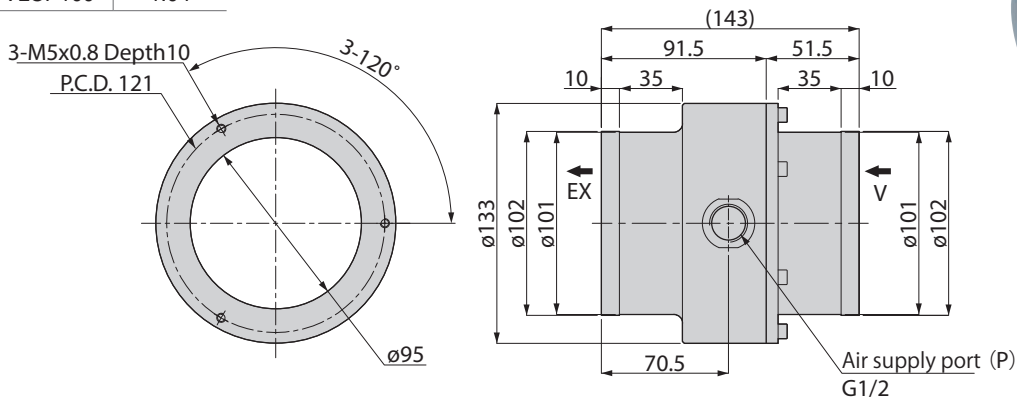
| Model code | Weight (kg) |
|------------|-------------|
| VLCP50     | 0.50        |



### VLCP100

Pipe diameter  $\varnothing 101$  mm type

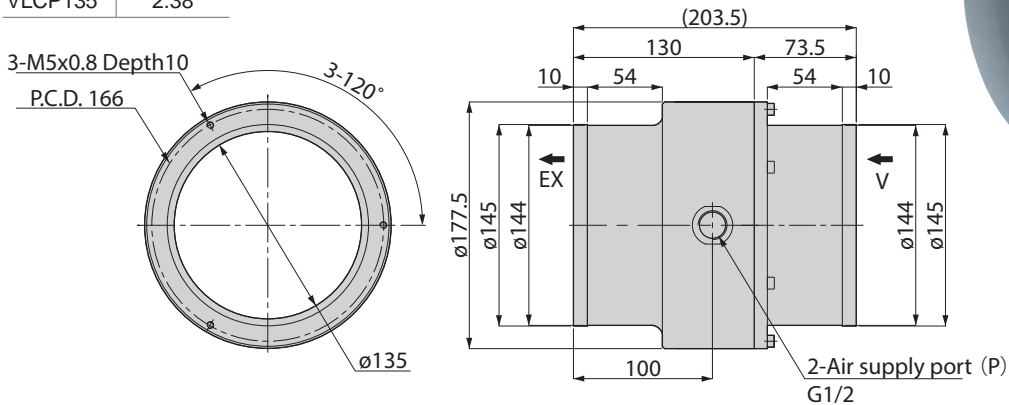
| Model code | Weight (kg) |
|------------|-------------|
| VLCP100    | 1.04        |



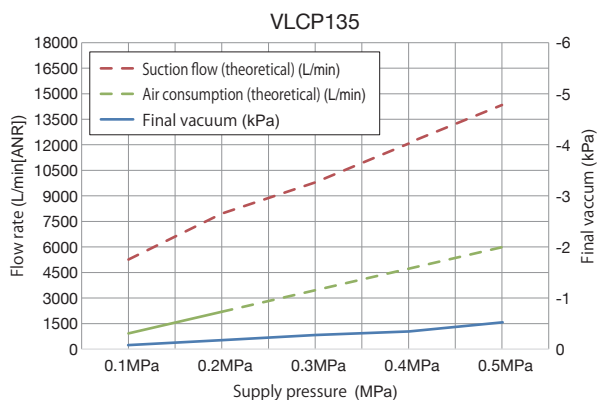
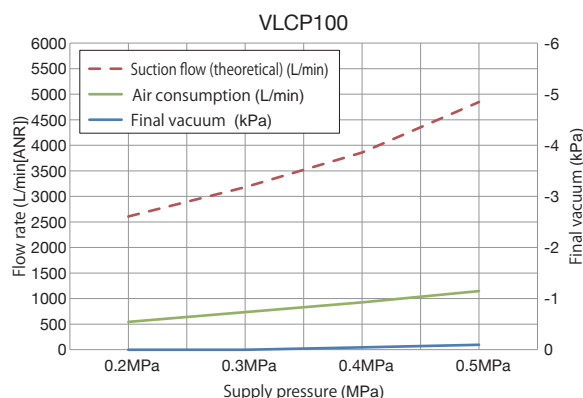
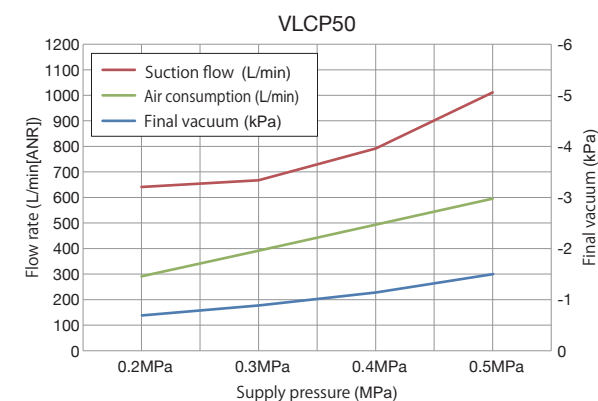
### VLCP135

Pipe diameter  $\varnothing 144$  mm type

| Model code | Weight (kg) |
|------------|-------------|
| VLCP135    | 2.38        |



## Characteristic Graph



## Optional parts

### Tube fitting for air supply port

| Type                  | Model code | Tube dia. (mm) | Thread size |
|-----------------------|------------|----------------|-------------|
| Straight<br><b>PC</b> | PC10-G3    | 10             | G3/8        |
|                       | PC10-G4    |                | G1/2        |
|                       | PC12-G3    | 12             | G3/8        |
|                       | PC12-G4    |                | G1/2        |
|                       | PC16-G3    | 16             | G3/8        |
|                       | PC16-G4    |                | G1/2        |
| Elbow<br><b>PL</b>    | PL10-G3    | 10             | G3/8        |
|                       | PL10-G4    |                | G1/2        |
|                       | PL12-G3    | 12             | G3/8        |
|                       | PL12-G4    |                | G1/2        |
|                       | PL16-G3    | 16             | G3/8        |
|                       | PL16-G4    |                | G1/2        |

### Tube for air supply port

| Tube type                      | Model code                          | O.D.xI.D. (mm) | Tube length (m) | Tube color      |                 |
|--------------------------------|-------------------------------------|----------------|-----------------|-----------------|-----------------|
| Polyurethane tube<br><b>UB</b> | UB1065- <sup>3</sup> - <sup>4</sup> | 10x6.5         | 20              | B : Black       |                 |
|                                |                                     |                | 50              | R : Red         |                 |
|                                |                                     |                | 100             | O : Orange      |                 |
|                                | UB1280- <sup>3</sup> - <sup>4</sup> | 12x8           | 20              | YB : Ocher      |                 |
|                                |                                     |                | 50              | Y : Yellow      |                 |
|                                |                                     |                | 100             | G : Green       |                 |
|                                | UB1611-20- <sup>4</sup>             | 16x11          | 20              | BU : Blue       |                 |
|                                |                                     |                |                 | CB : Clear Blue |                 |
|                                |                                     |                |                 | C : Transparent |                 |
|                                |                                     |                |                 |                 | W : Milky white |

\*1. For <sup>3</sup> in the model code, please select a code of tube length, and for <sup>4</sup>, a code of tube color.

\*2. Tube length : 50m option is available for Tube color B (Black) only.

## About hoses for vacuum and exhaust ports

|                               |  |
|-------------------------------|--|
| Toyofoods Earth (Anti-static) | Toyox Co., Ltd.<br><a href="https://www.toyox.co.jp/">https://www.toyox.co.jp/</a>           |
| Toyospring                    |  |
| Toyofoods-S                   |  |
| TAC SD-A                      | Totaku Industries, Inc.<br><a href="https://www.totaku.co.jp/">https://www.totaku.co.jp/</a> |
| TAC SD-AS (Anti-static)       |  |
| TAC Eco SD-AS (Anti-static)   |  |
| Crystal Hose SF Type          | TIGERS POLYMER CORPORATION<br><a href="https://tigers.jp/">https://tigers.jp/</a>            |
| Crystal Hose E Type           |  |
| Crystal Hose F-3 Type         |  |

\*1. For detailed hose sizes and specifications, please check the website of each manufacturer.

\*2. No guarantee is provided that the contents listed in the table on the left can be used on Large Suction Flow Vacuum Generator.

# PISCO®

---

## PISCO®

OVERSEAS SALES DEPARTMENT (HQ)  
PISCO KOREA CO., LTD.  
PISCO TAIWAN CO., LTD.  
NIHON PISCO TAIWAN CO., LTD  
PISCO USA, INC.  
PISCO VIETNAM CO., LTD  
PISCO CHINA, CO., LTD.  
NIHON PISCO CO., LTD. BANGKOK REPRESENTATIVE OFFICE

|                         |                         |
|-------------------------|-------------------------|
| TEL. +81-(0)265-76-7751 | FAX. +81-(0)265-76-3305 |
| TEL. +82-32-327-9795    | FAX. +82-32-327-0385    |
| TEL. +886-(0)6-726-5762 | FAX. +886-(0)6-726-5752 |
| TEL. +886-(0)6-726-4520 | FAX. +886-(0)6-726-1526 |
| TEL. +1-630-993-3500    |                         |
| TEL. +84-24-3200-0310   | FAX. +84-24-3200-5331   |
| TEL. +86-21-3123-2755   |                         |
| TEL. +66-(0)2-612-7366  | FAX. +66-(0)2-612-7399  |

 <https://www.pisco.co.jp/en>

e-mail. intl@pisco.co.jp  
e-mail. webmaster@pisco.co.kr  
e-mail. P8638@ms16.hinet.net

e-mail. info@pisco.com  
e-mail. piscovn@pisco-vn.com  
e-mail. info@pisco-china.com  
e-mail. piscochk@pisco.co.jp